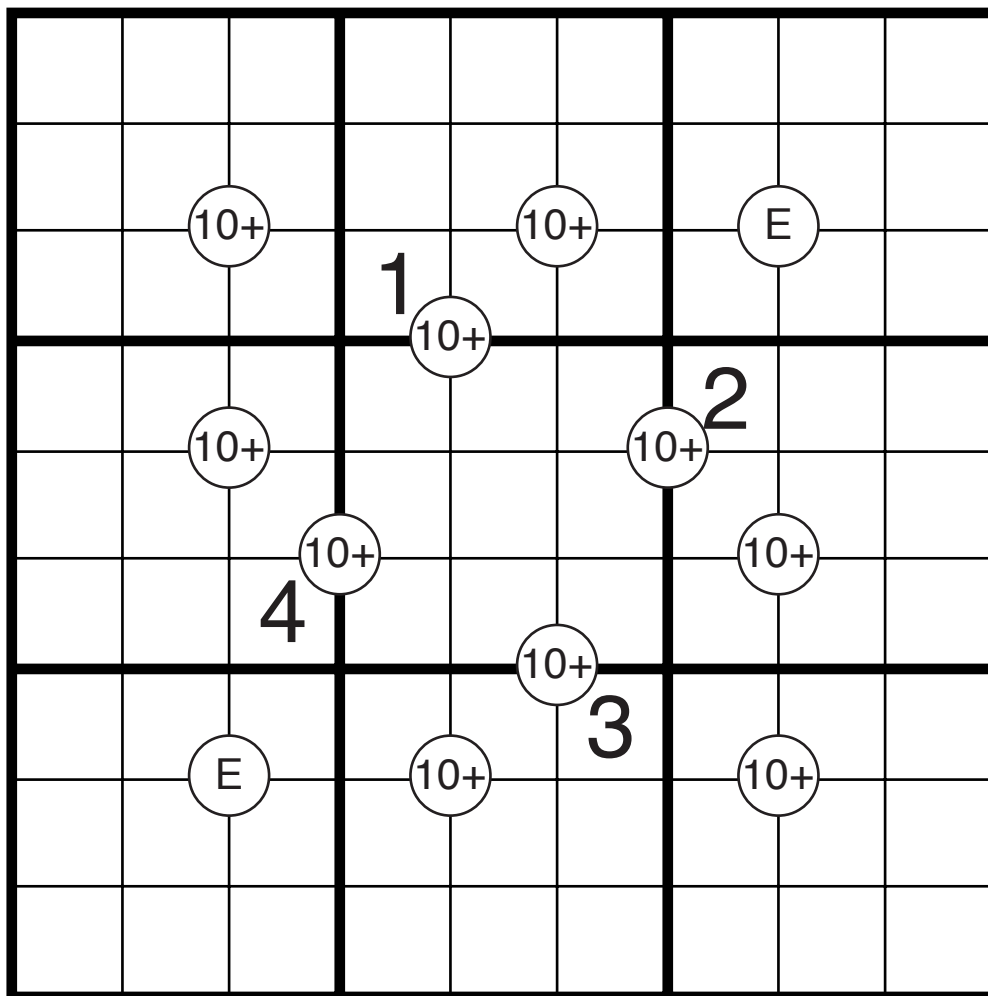


Mathrax Sudoku by clover!

Standard Sudoku rules (insert a number from 1 to 9 into each cell so that no number repeats in any row, column, or bold region). Also, some of the intersections of four cells are marked by a circle. If a circle contains a number and an operator, the number must be the result of the operation applied to both pairs of diagonally opposite cells. If a circle contains an "E" that indicates all four cells around the circle must be even.



Ten-tacles