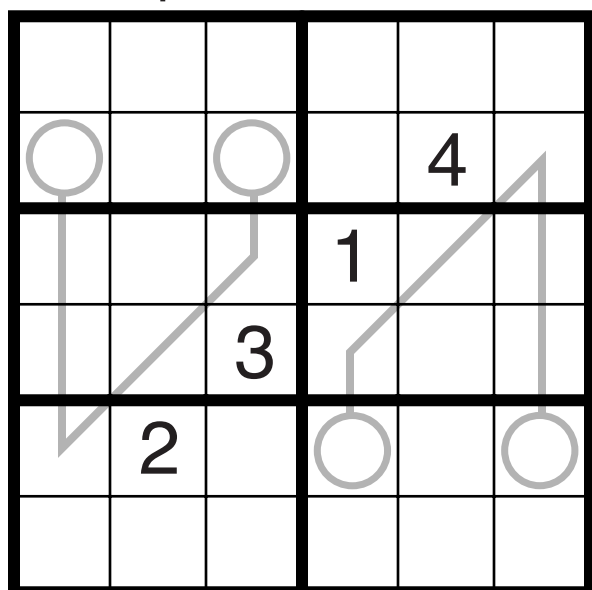


Odd/Even Bridge Sudoku by Philip Newman

Standard Sudoku rules (insert a number from 1 to 9 into each cell so that no number repeats in any row, column, or bold region). A circle is placed at each end of every line, and while one of these circles must contain an odd number, the other must contain an even number. The odd number in the circle at one end of each line should show the total number of odd numbers (excluding itself) along the line, while the even number in the circle at the other end should show the total number of even numbers (excluding itself) along the line. Multiple lines may intersect within a circle; the number on the circle indicates the value for each line separately.

Example:

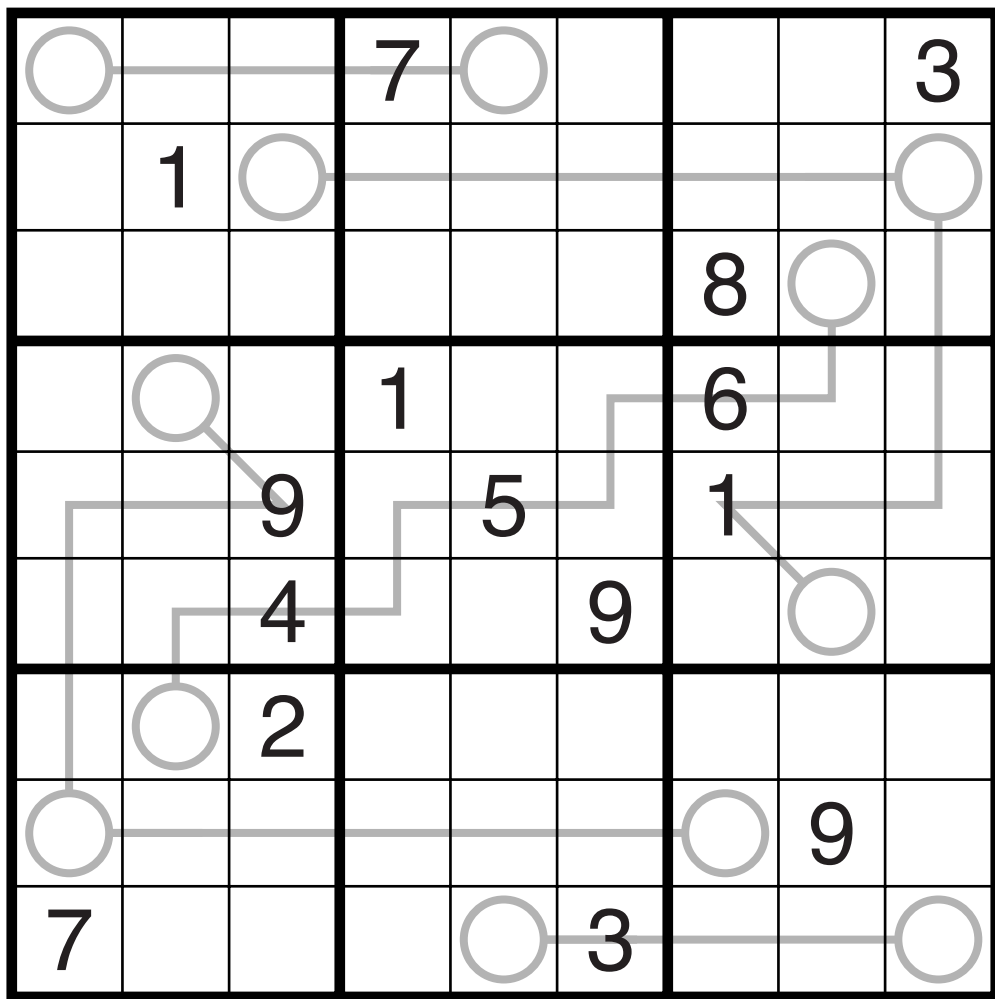


Solution:

6	5	4	3	1	2
③	1	②	5	4	6
2	4	5	1	6	3
1	6	3	2	5	4
5	2	6	④	3	①
4	3	1	6	2	5

Example by Bill Murphy

Odd/Even Bridge Sudoku by Philip Newman



Abridged