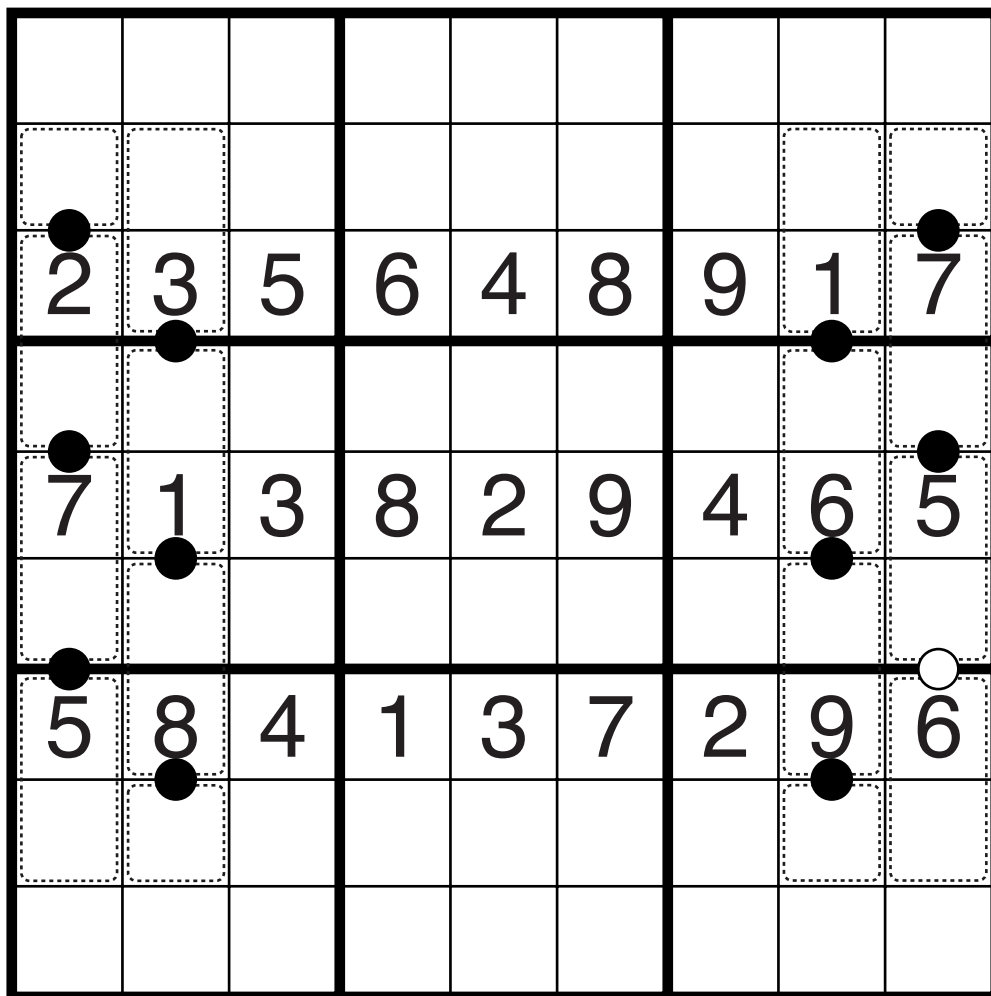


# Kropki Cages Sudoku by Bill Murphy

Standard Sudoku rules (insert a number from 1 to 9 into each cell so that no number repeats in any row, column, or bold region). If a white circle is given between two cages, then the sums of the numbers in those cages must differ by 1. If a black circle is given between two cages, then the sums of the numbers in those cages must have a ratio of 2. Numbers cannot repeat in a cage, and not all circles are given.



*Rows and Columns*