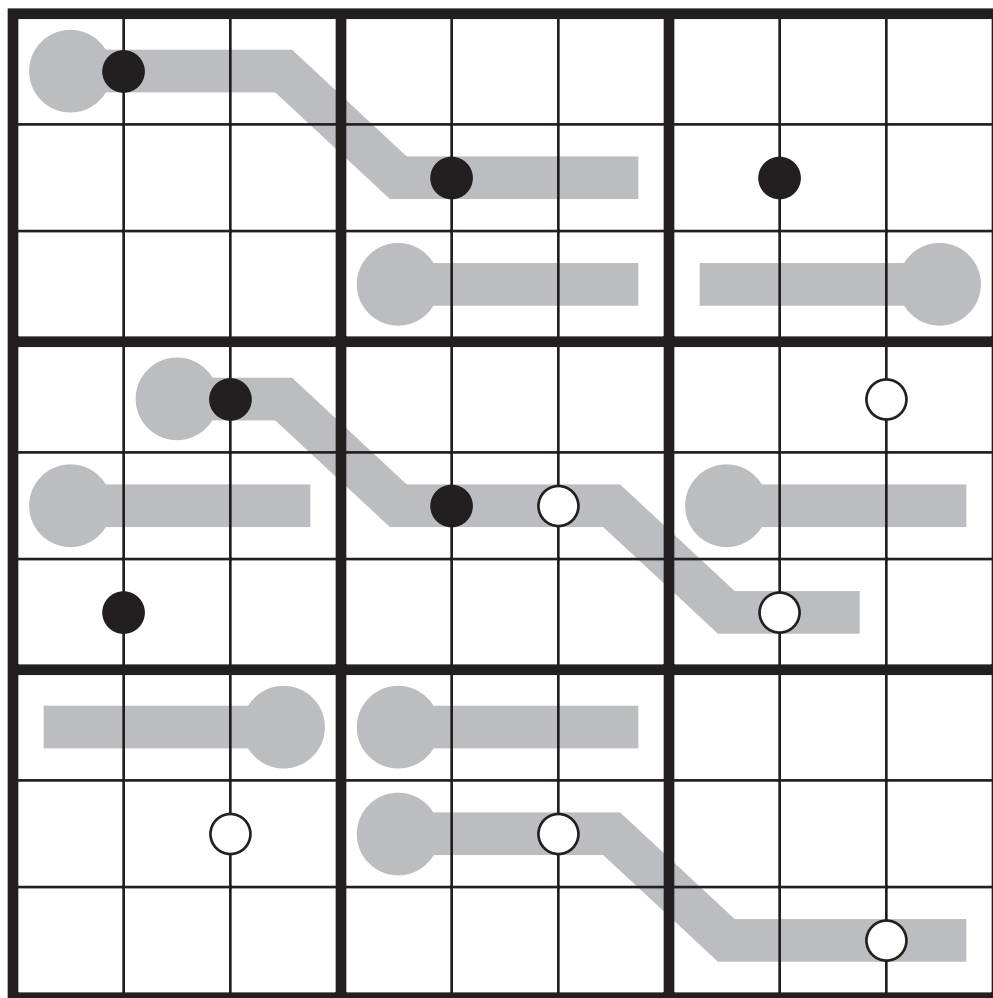


Thermo-Kropki Pairs Sudoku by Philip Newman

Standard Sudoku rules (Insert a number from 1 to 9 into each cell so that no number repeats in any row, column, or bold region). Some thermometer shapes are in the grid; numbers must be strictly increasing from the round bulb to the flat end. Also, if a white circle is given between two adjacent cells, then the two numbers in those cells must differ by 1. If a black circle is given between two adjacent cells, then the two numbers must have a ratio of 2. Pairs of cells without circles can have any relationship.



Old Friends