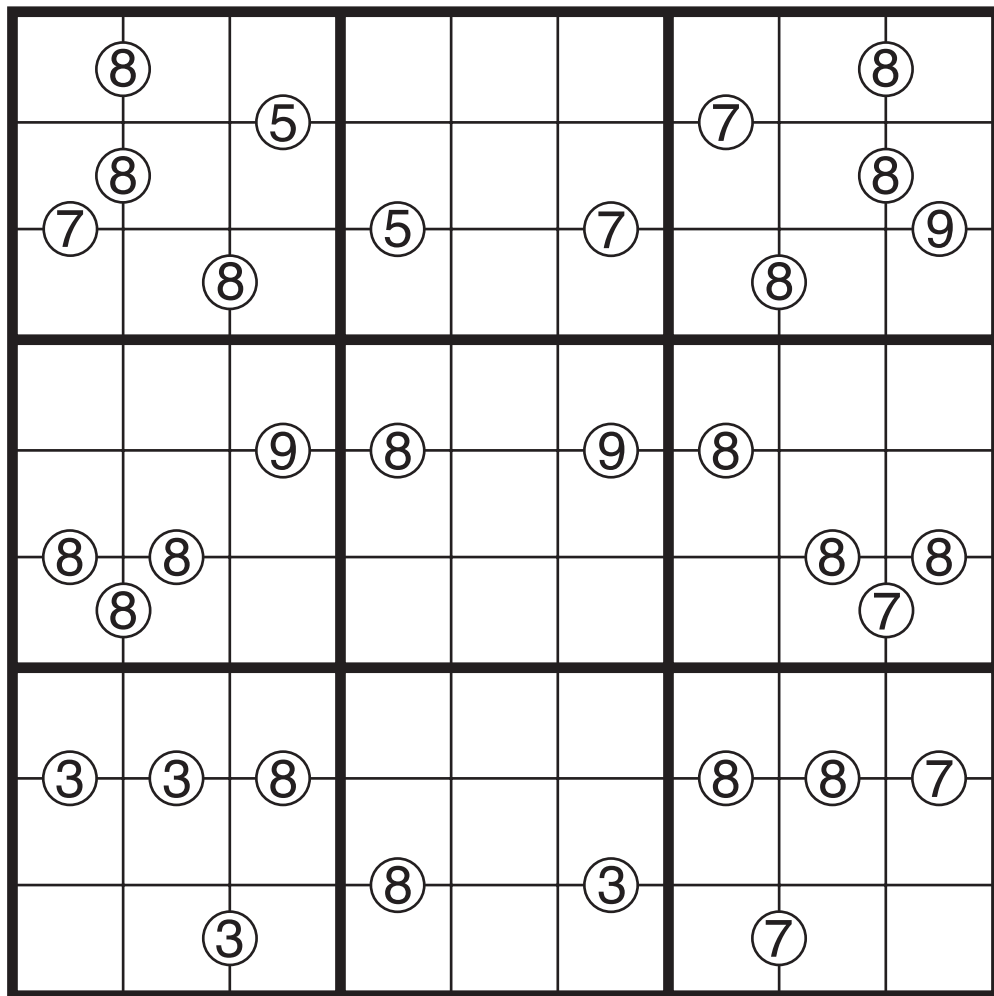


## Multiples Sudoku by Thomas Snyder

Rules: Standard Sudoku Rules. Also, some numbers are given on the edges between two adjacent cells. Treating those cells as a two-digit number (reading left to right or top to bottom), the two-digit number must be a multiple of the clue.  
 (For example, near a 7 clue, the two digits can be 14, 21, 28, 35, ....)



*Too Many Eights? (from 2022 US Sudoku Grand Prix)*