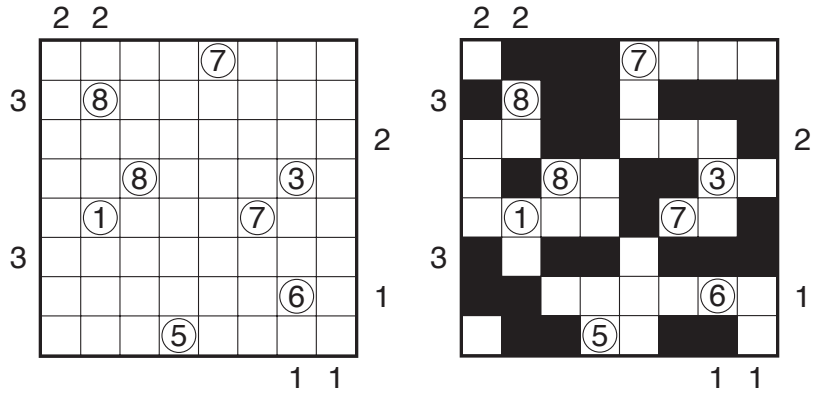
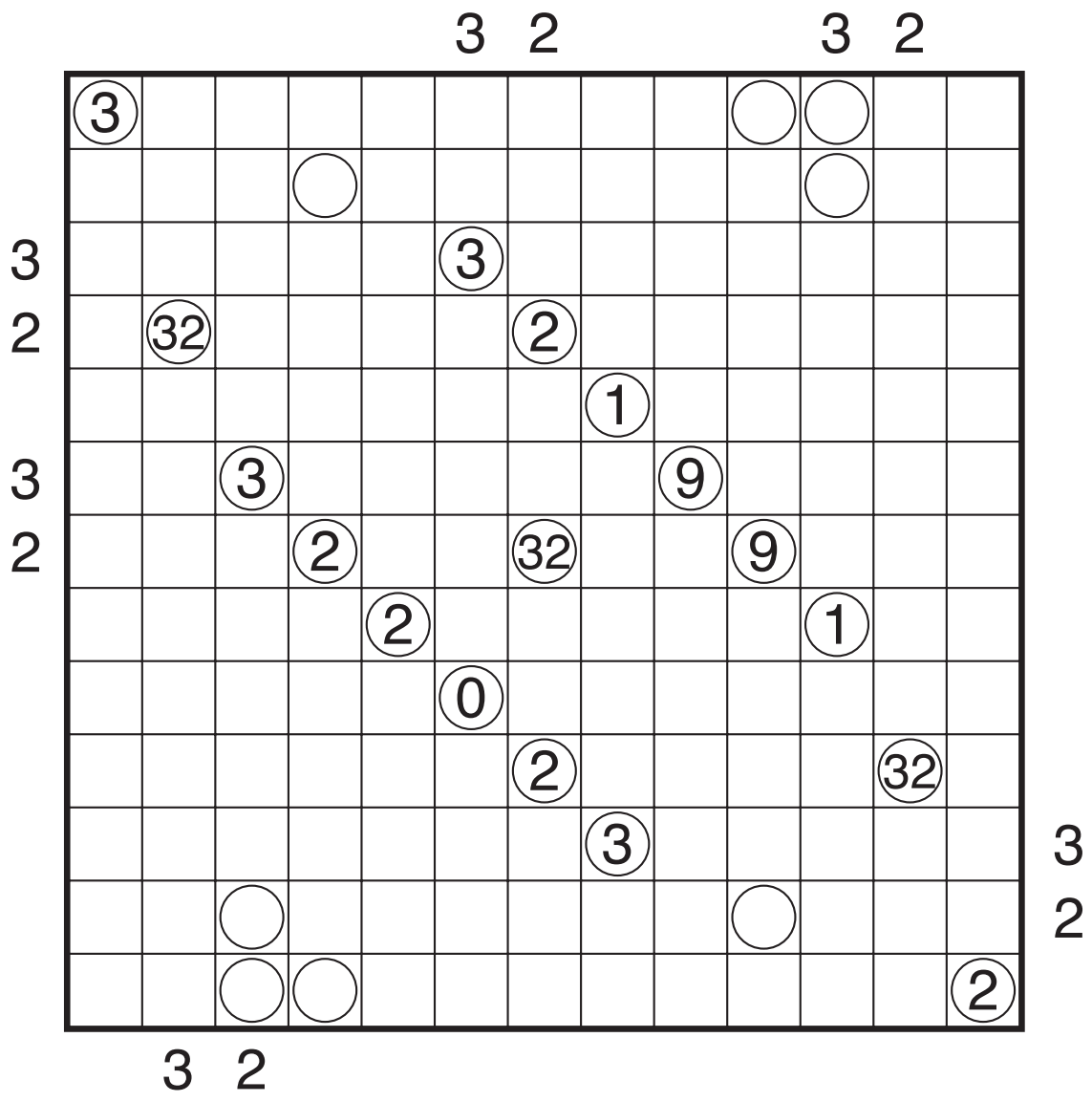


Kurotto (Skyscrapers) by Prasanna Seshadri

Rules: Standard Kurotto rules. Also, numbers outside the grid show the number of separate shaded cells visible in that direction. A segment of length N in a given direction is taken as a building of height N. Buildings of height N block the view of all buildings behind them of equal or lesser height.



Example by Serkan Yürekli



32 on 3/2/23