

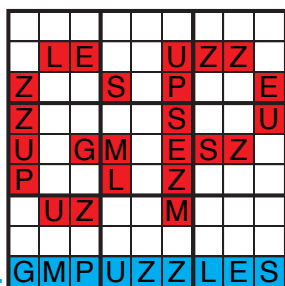
BEST OF 2022 SUDOKU



Thomas Snyder	Multiples Sudoku*
Kishore Kumar Sridharan	Thermo-Sudoku
Jonas Gleim	Arrow/Thermo-Sudoku
Thomas Snyder	US Team Shirt Puzzle
Ashish Kumar	Sudoku

*Best Sudoku puzzle of 2022

GRANDMASTER PUZZLES



www.gmpuzzles.com



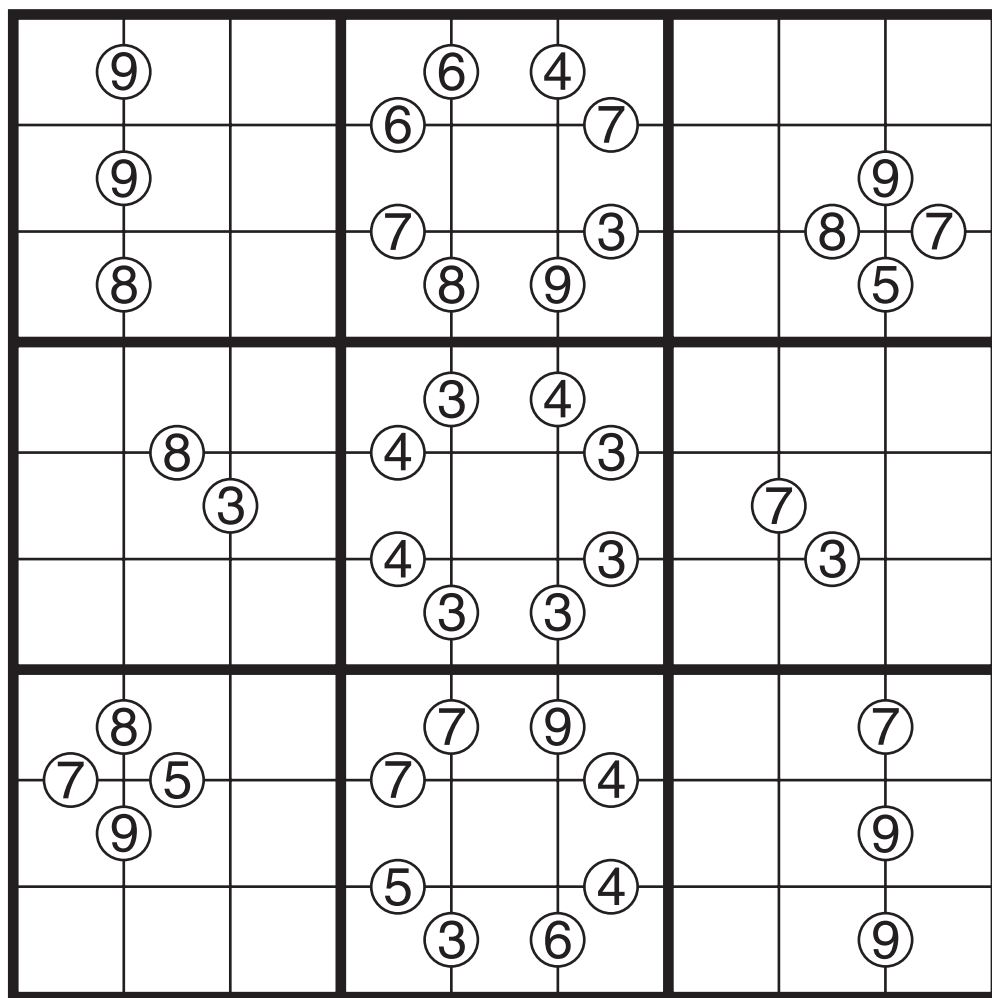
<https://www.gmpuzzles.com/blog/category/sudoku/>



<https://www.gmpuzzles.com/blog/category/other-posts/bestof/>

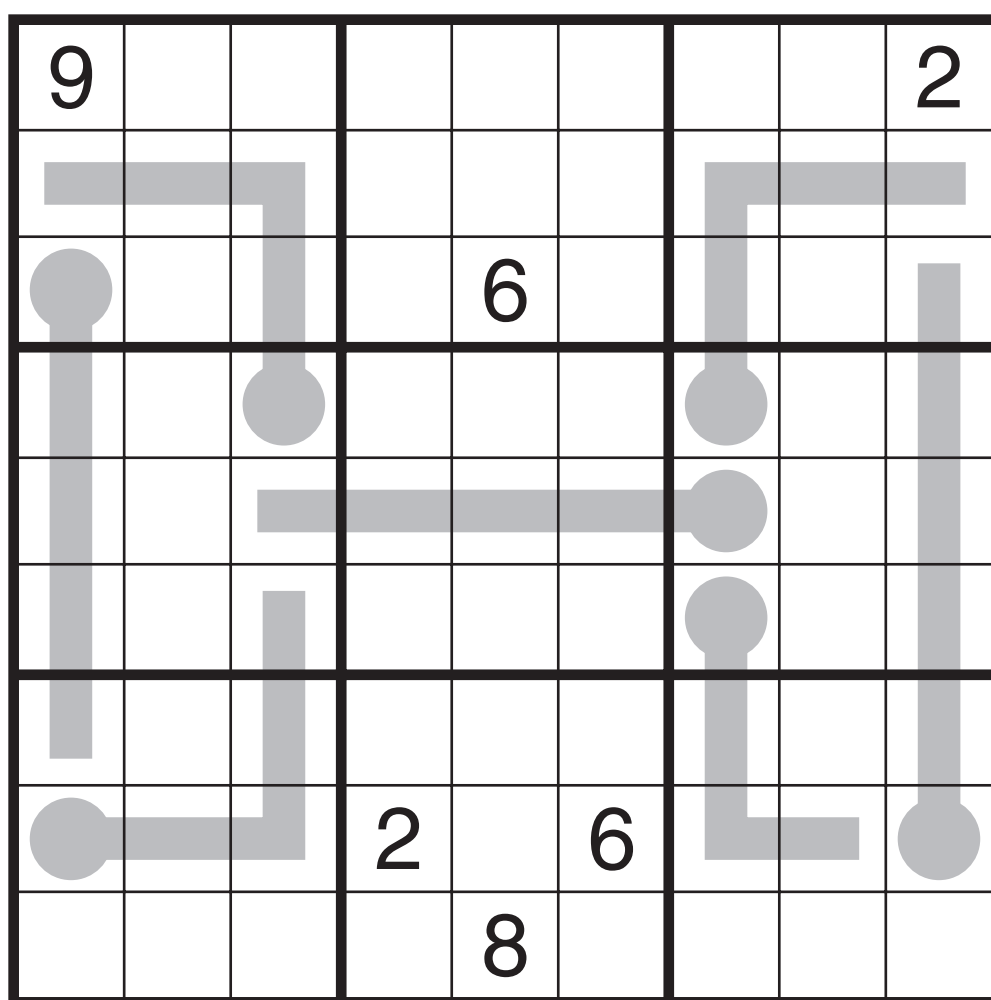
Multiples Sudoku by Thomas Snyder

Rules: Standard Sudoku rules. Also, some numbers are given on the edges between two adjacent cells. Treating those cells as a two-digit number (reading left to right or top to bottom), the two-digit number must be a multiple of the clue. (For example, near a 7 clue, the two digits can be 14, 21, 28, 35,)



Boxes

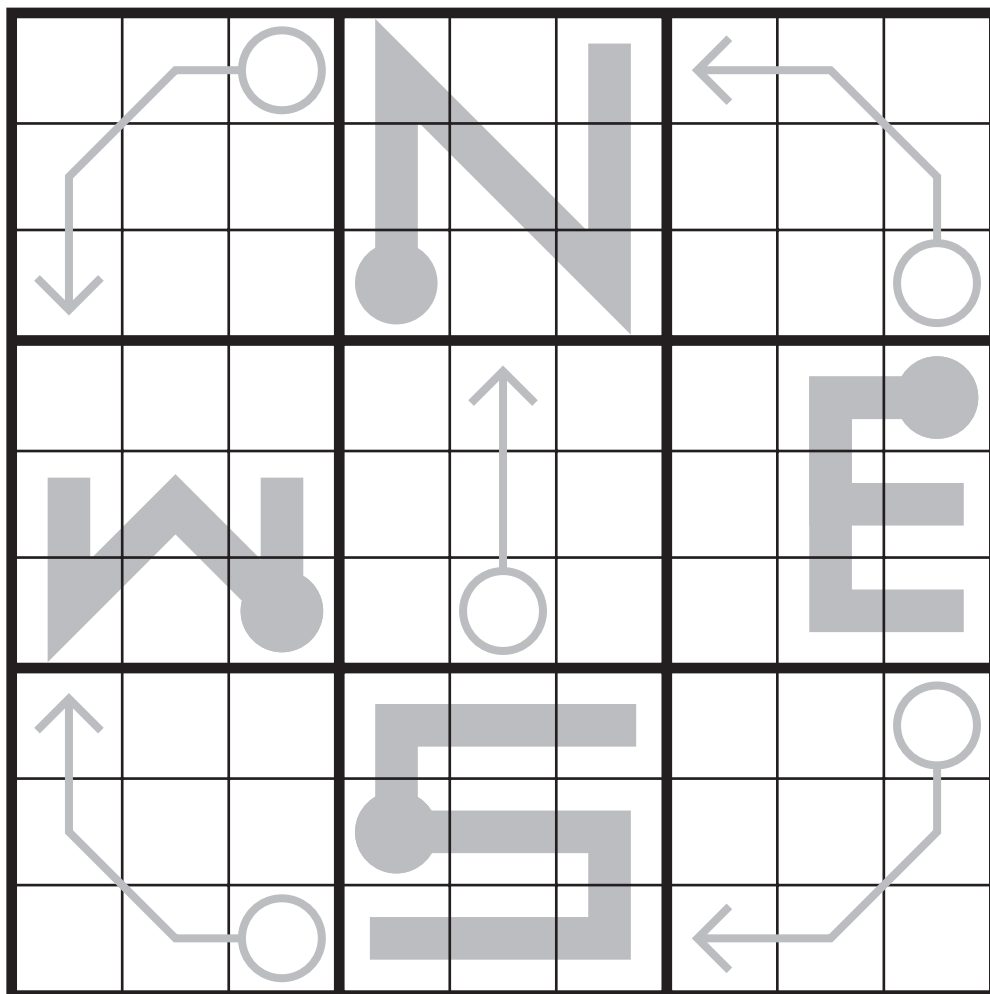
Thermo-Sudoku by Kishore Kumar Sridharan



Dumbbell

Arrow/Thermo-Sudoku by Jonas Gleim

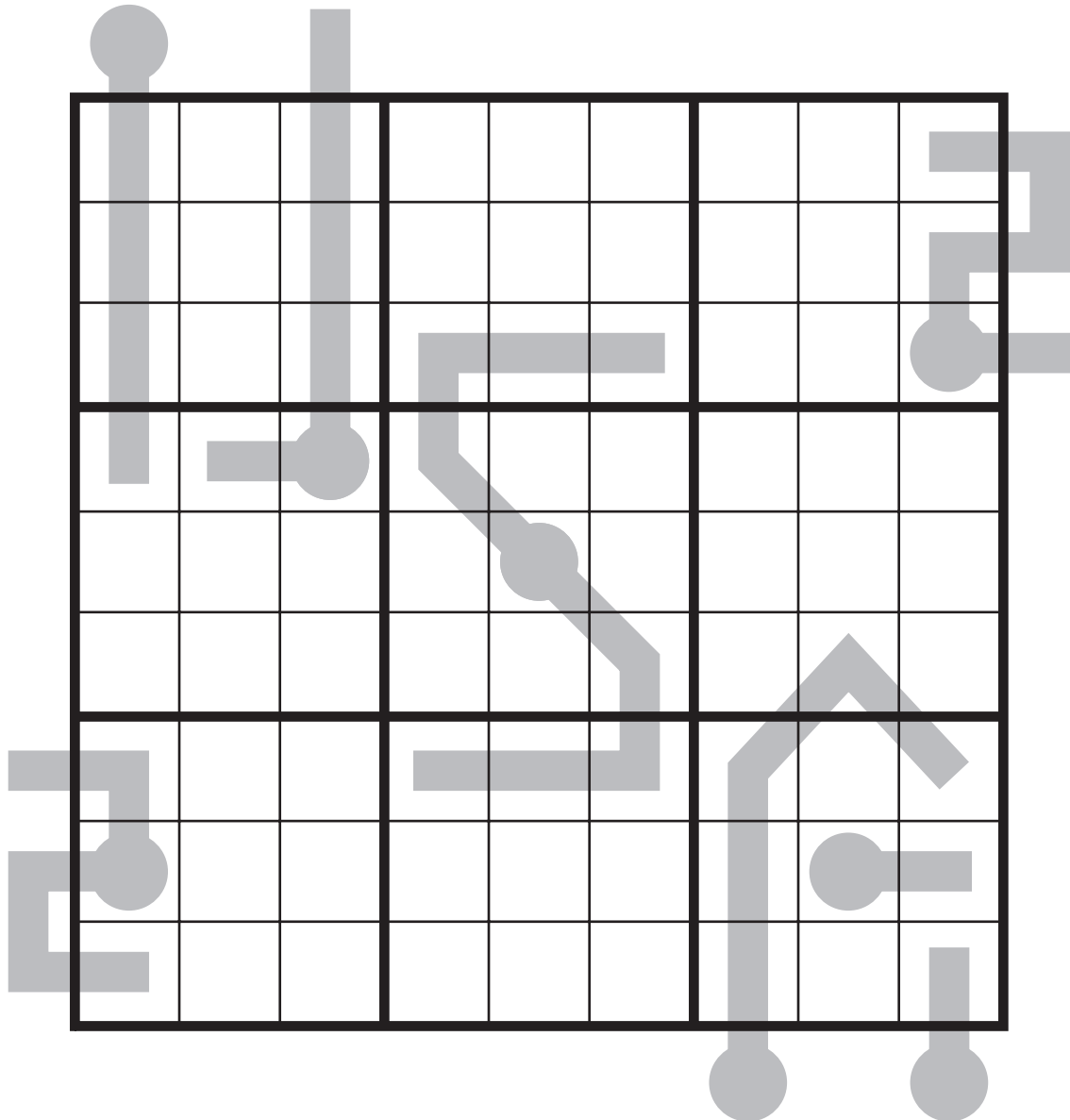
Rules: Standard Arrow Sudoku rules and Thermo-Sudoku rules.



Compass

Sunday Surprise by Thomas Snyder

Rules: This puzzle from the US team t-shirts for the world championships is originally being released in an "instructionless" mode. It combines a common sudoku variation and a common puzzle type. More info will be given after the WSPC.



*US Team for 2022 World Sudoku
and Puzzle Championships*

Sudoku by Ashish Kumar



		5						9
			8				7	
6				4		3		
	9				7			
		4		5		8		
			6				1	
		7		8				4
	2				3			
3						1		

Channels