

BEST OF 2022

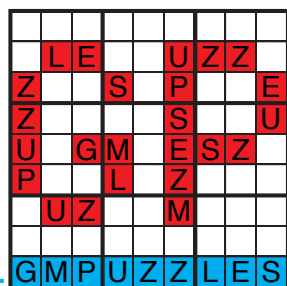
OBJECT PLACEMENT



Murat Can Tonta	Statue Park (Half and Half)*
Sam Cappleman-Lynes	Star Battle
Sam Cappleman-Lynes	Statue Park
Takeya Saikachi	Battleships (Pentomino)
Takeya Saikachi	Battleships

*Best Object Placement puzzle of 2022

GRANDMASTER PUZZLES



www.gmpuzzles.com



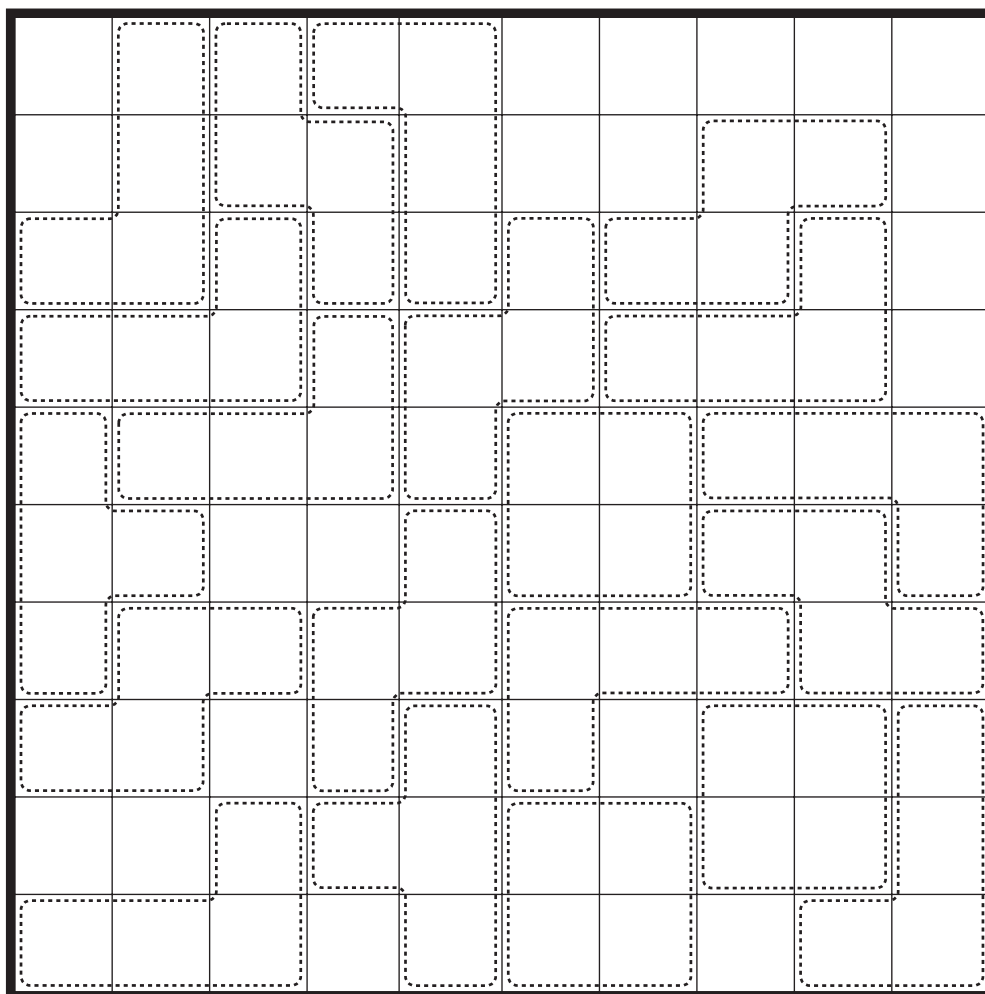
<https://www.gmpuzzles.com/blog/category/objectplacement/>



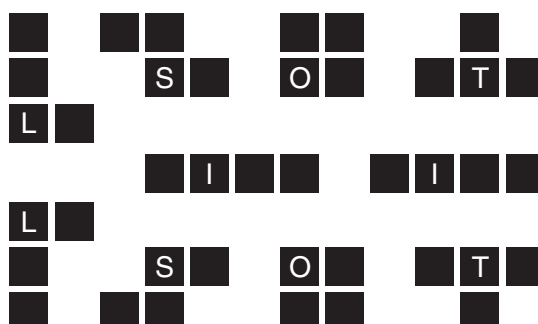
<https://www.gmpuzzles.com/blog/category/other-posts/bestof/>

Statue Park (Half and Half) by Murat Can Tonta

Rules: Standard Statue Park rules, using a double tetromino set. Also, there are some given cages with dashed lines. In each cage, exactly half of the total number of cells must be occupied by tetrominoes.



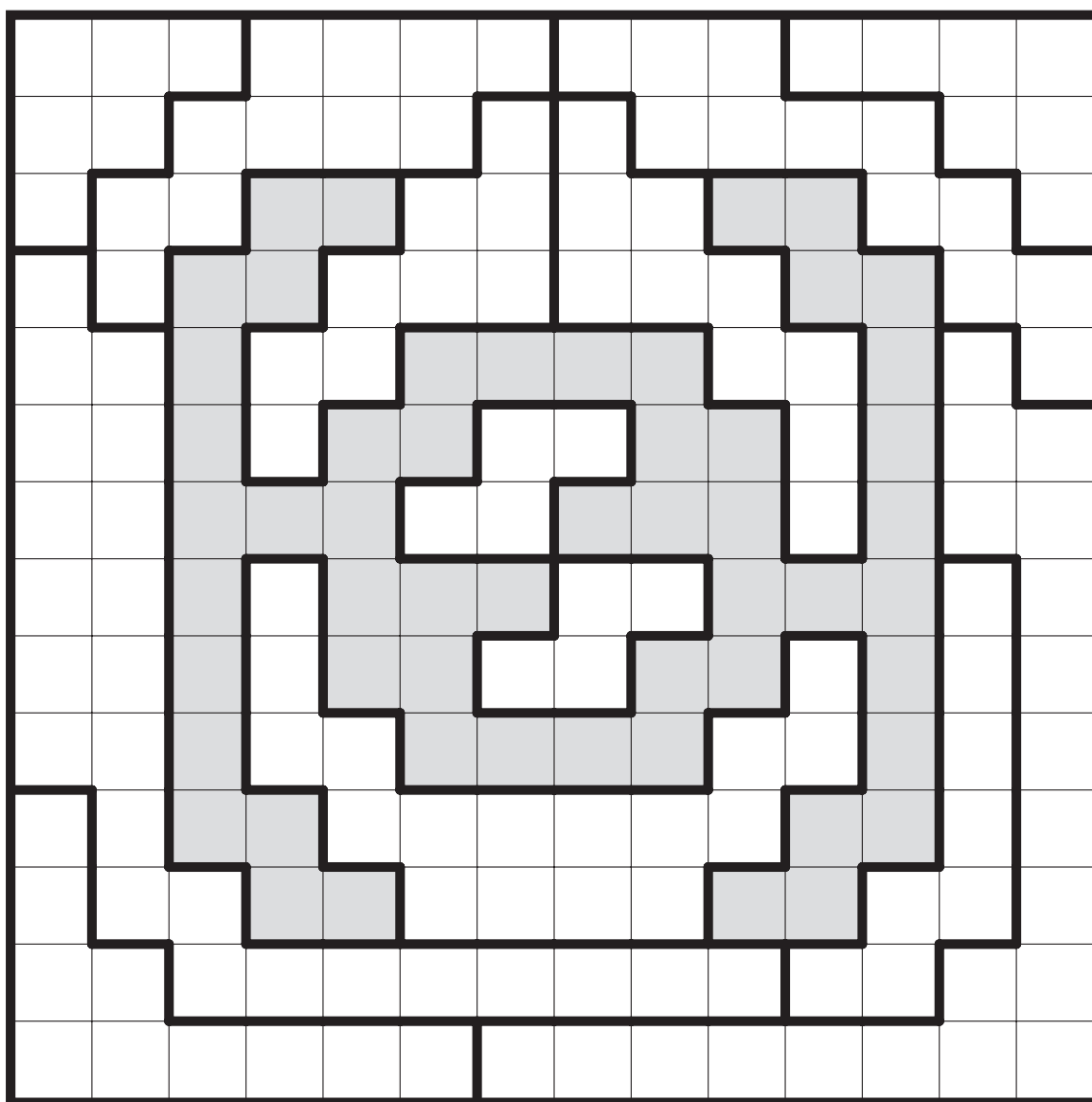
Where Are the Circles?



Star Battle by Sam Cappleman-Lynes

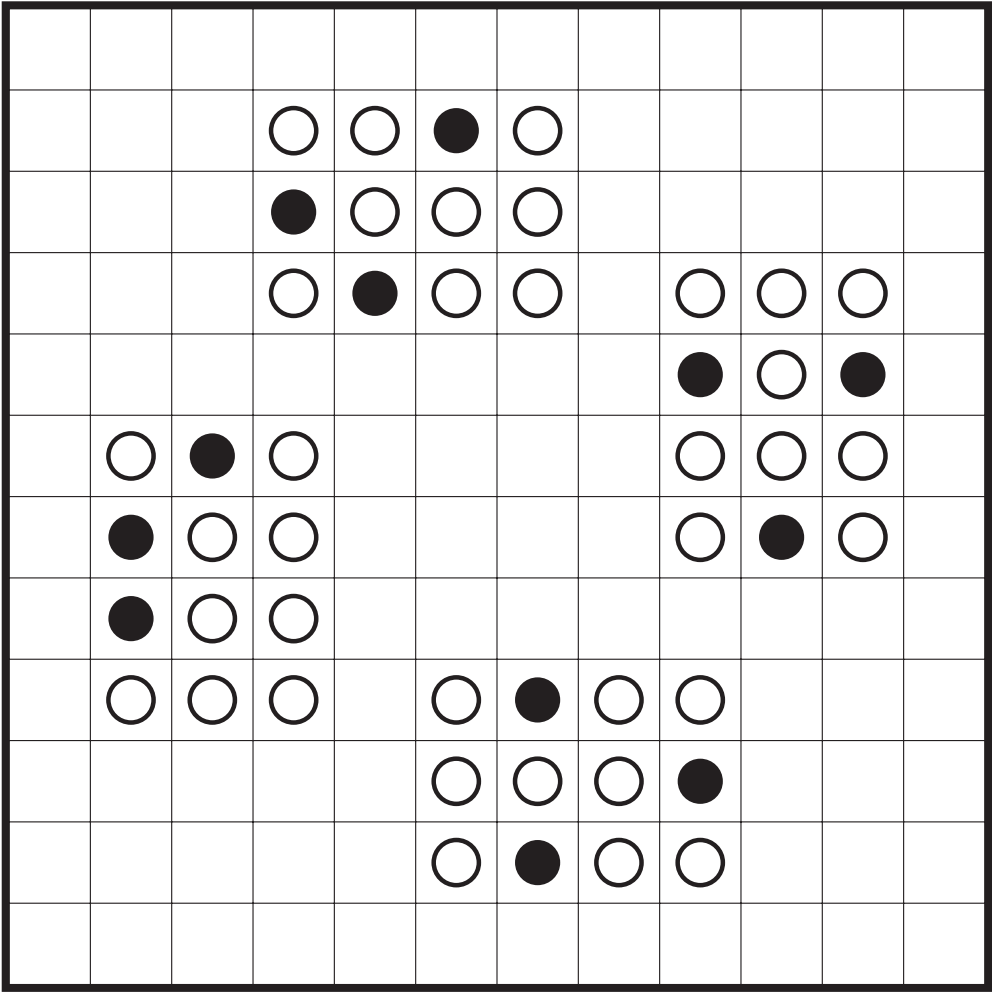


2★

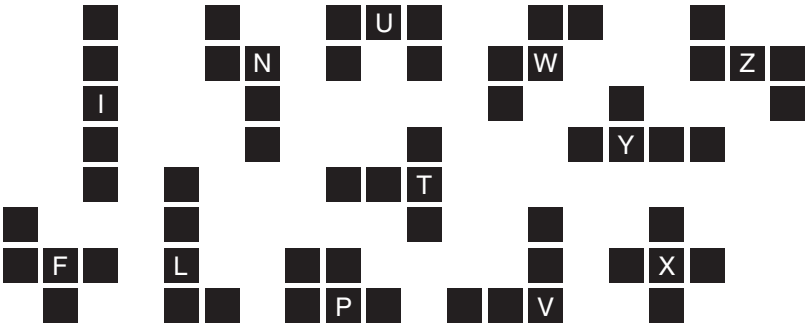


TIE Fighter

Statue Park by Sam Cappleman-Lynes

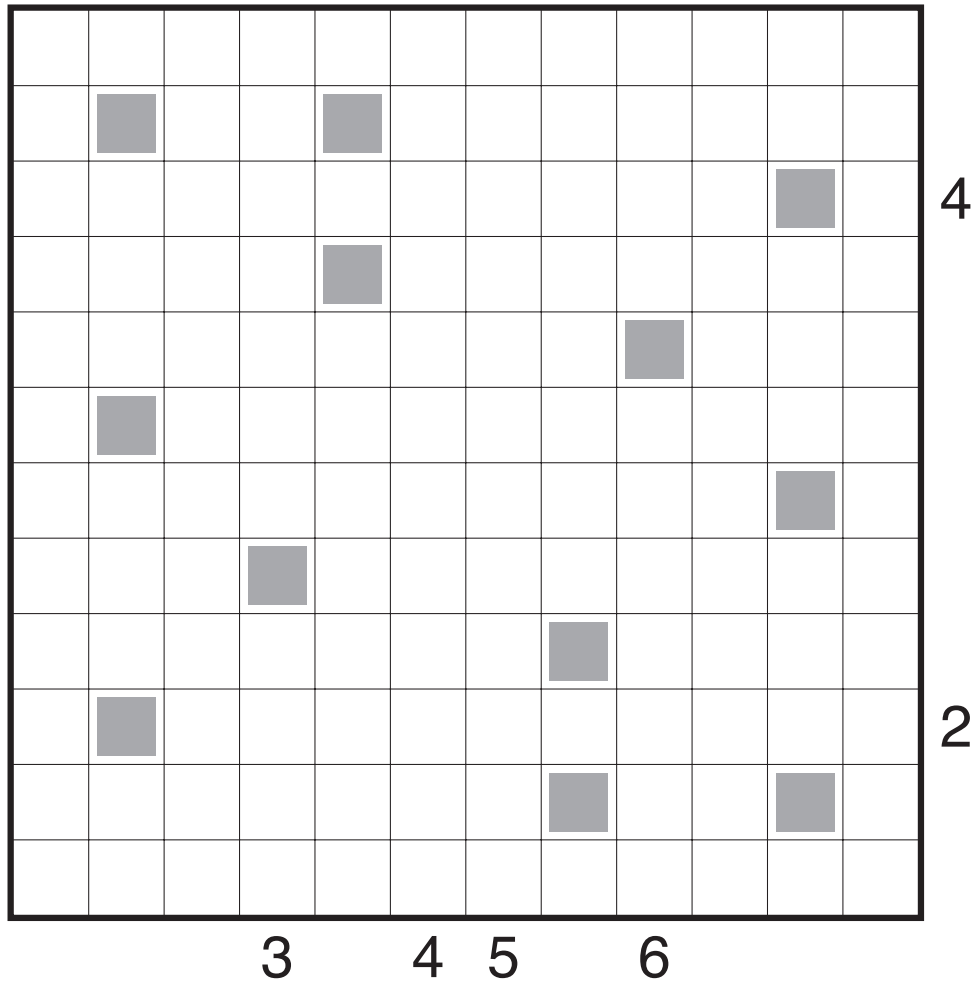


Boxes



Battleships (Pentomino) by Takeya Saikachi

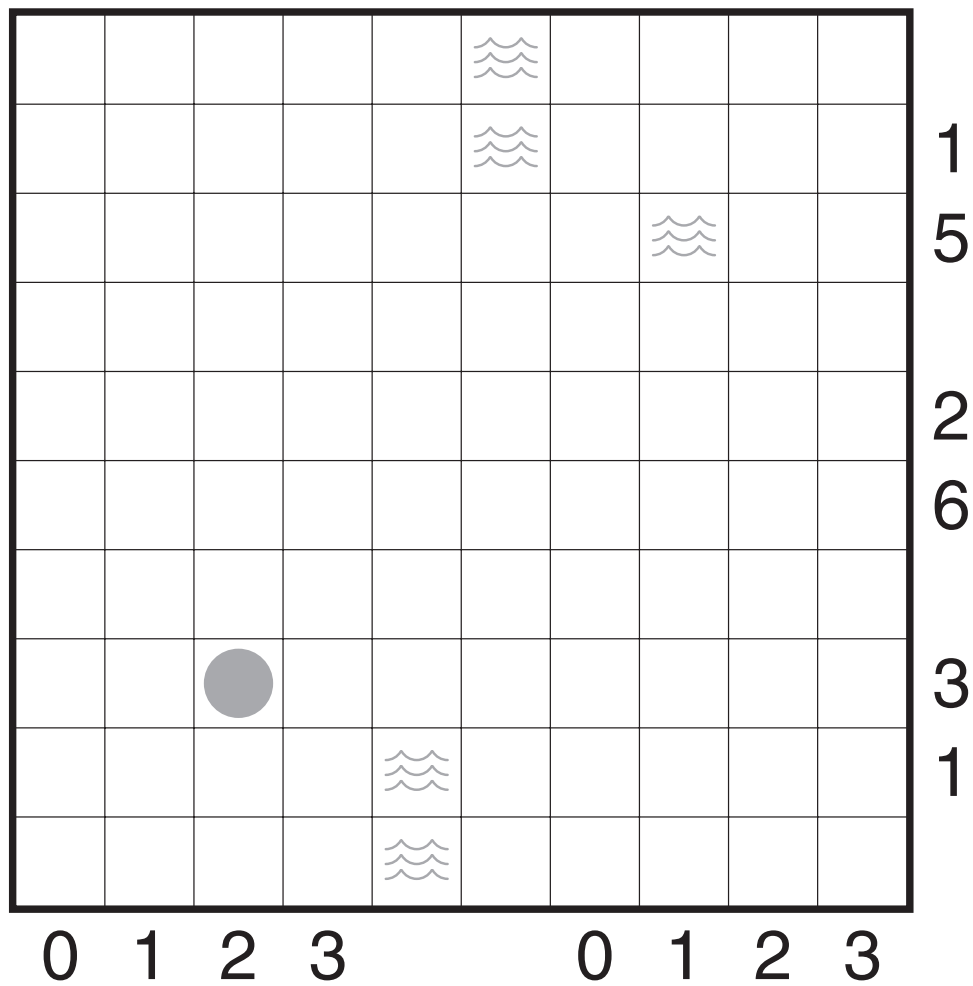
Rules: Standard Battleships rules. Use the indicated fleet. Ships can be rotated and reflected.



Squares



Battleships by Takeya Saikachi



0 to 3

