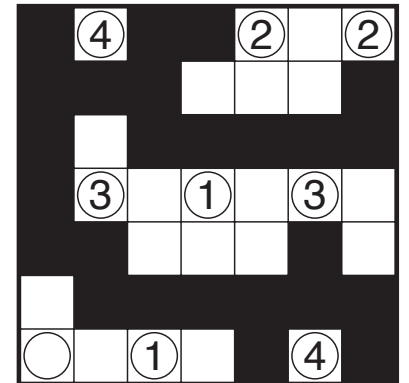
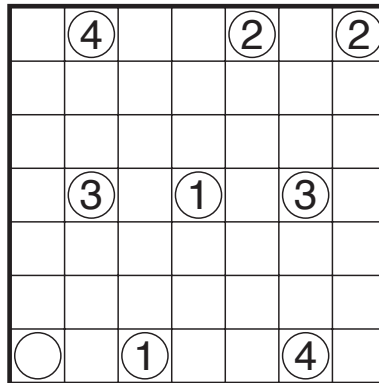
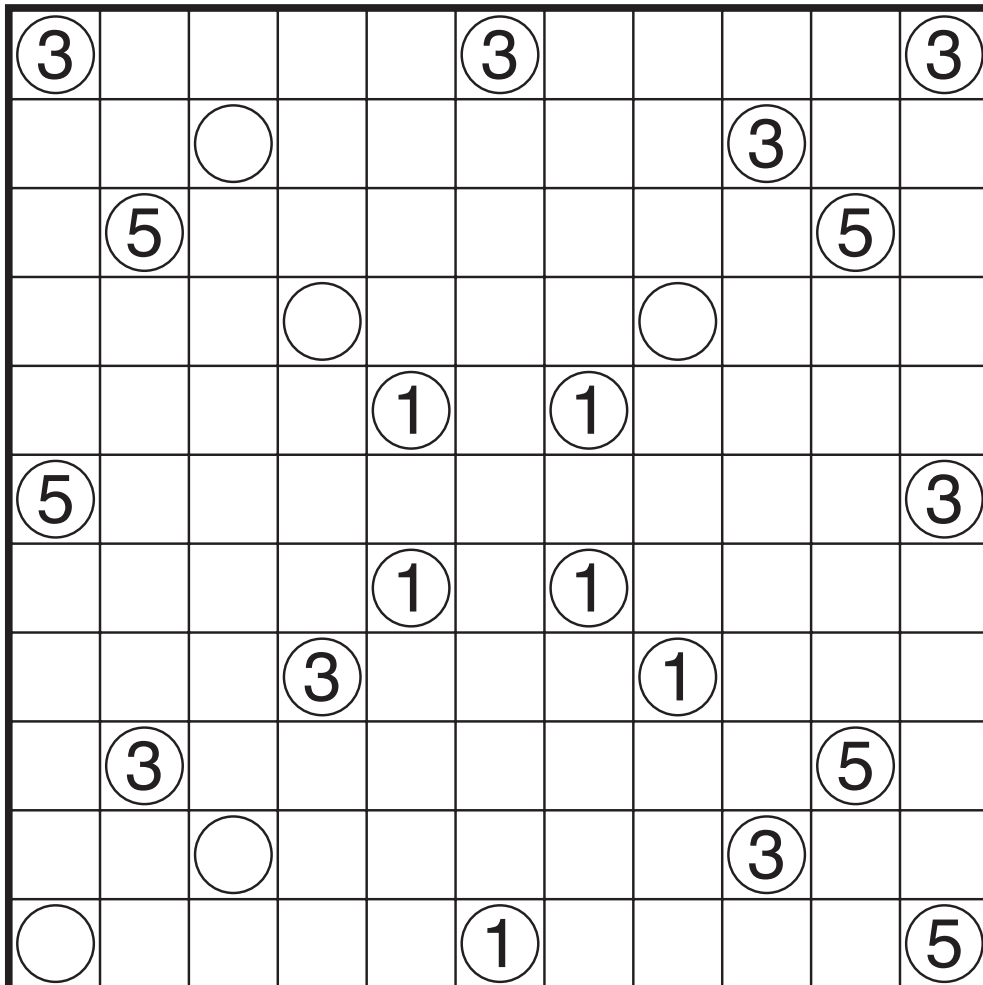


Canal View by Prasanna Seshadri

Rules: Shade some empty cells black to create a single connected group. Cells with circles cannot be shaded, and the shaded cells cannot form a 2x2 square anywhere in the grid. Each numbered cell indicates the total count of shaded cells connected vertically and horizontally to that numbered cell.



Example by Serkan Yürekli



135