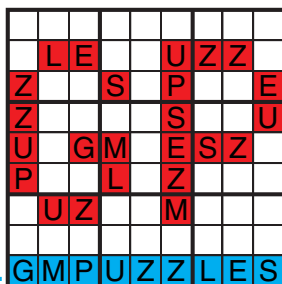




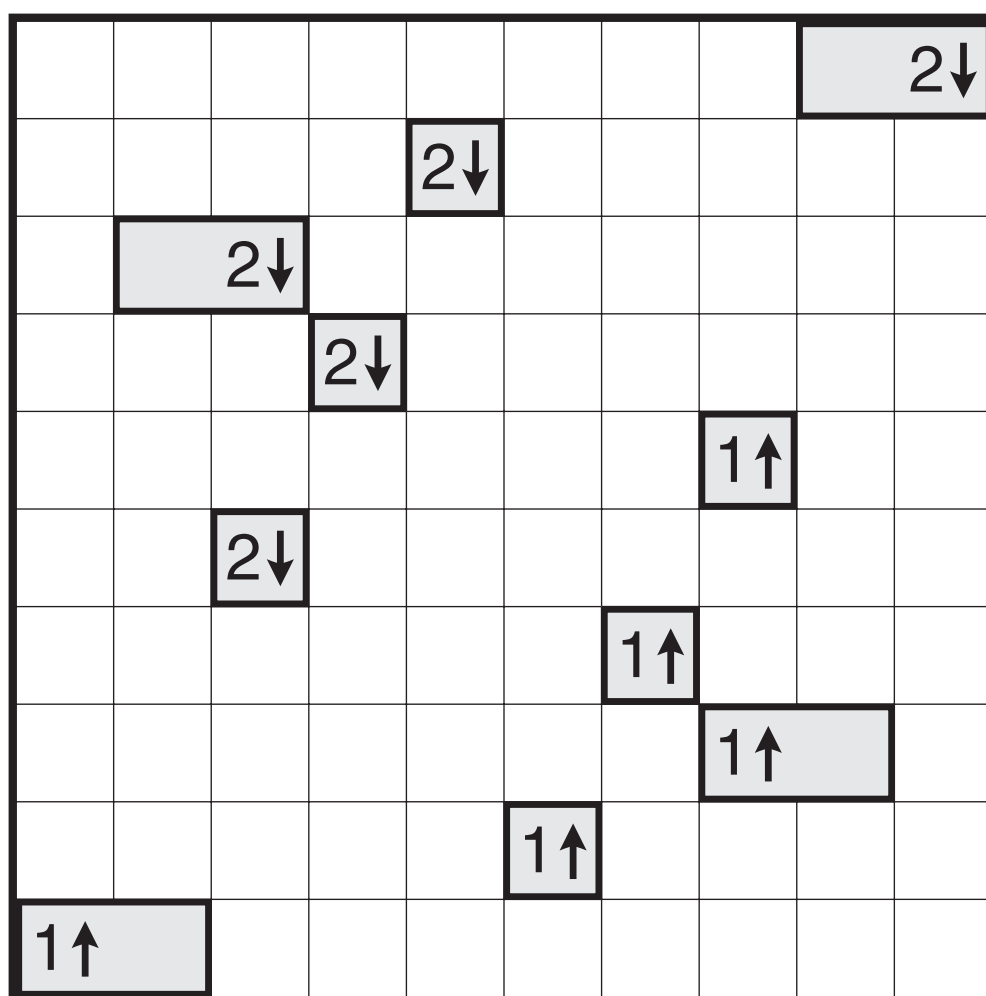
# YAJILIN

- Mark Sweep Yajilin
- wormsofcan Yajilin
- Chandrachud Nanduri Yajilin (Masyu)
- Grant Fikes Yajilin (Even Rows/Columns)
- JinHoo Ahn Yajilin
- David Altizio Yajilin

## GRANDMASTER PUZZLES



# Yajilin by Mark Sweep

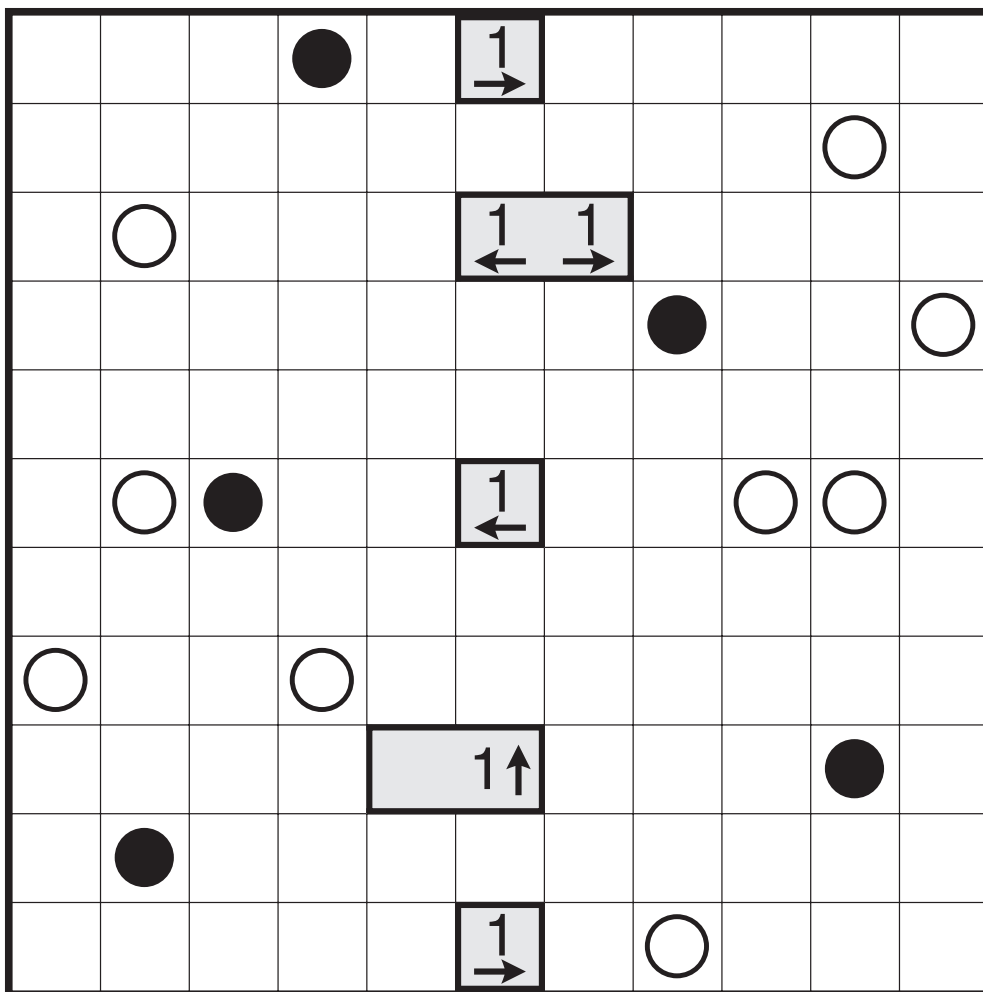


*One Up Two Down*



# Yajilin (Masyu) by Chandrachud Nanduri

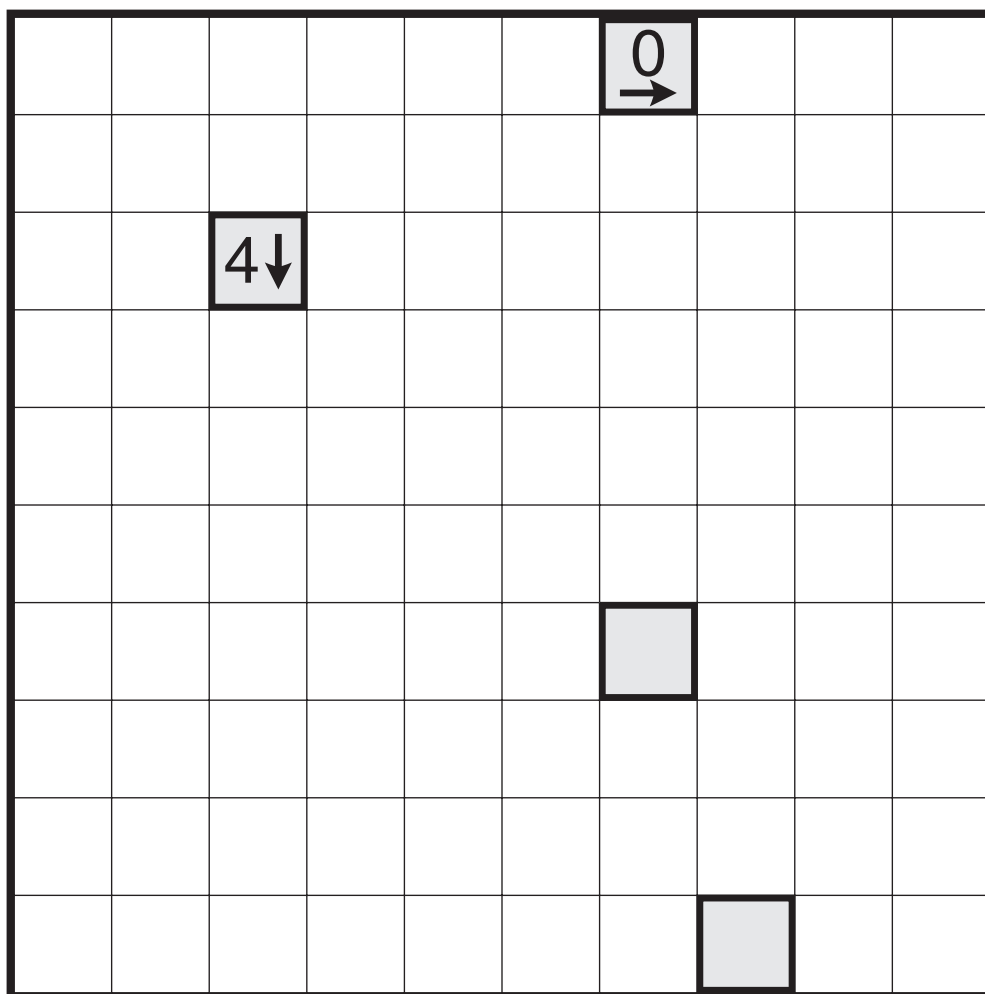
Rules: Standard Yajilin rules. Also, the loop must go straight through the cells with white circles, with a turn in at least one of the cells immediately before/after each white circle. The loop must make a turn in all the black circles, but must go straight in both cells immediately before/after each black circle.



*Divided by 1*

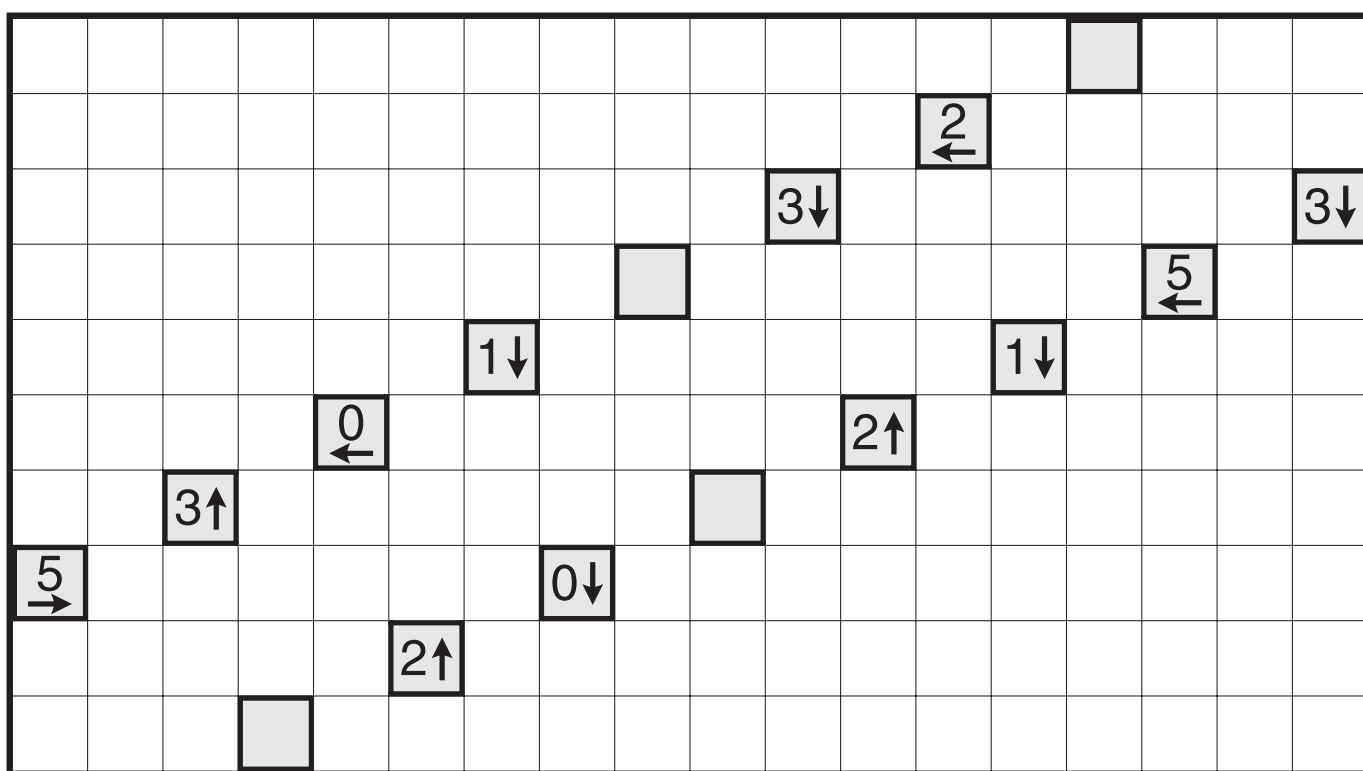
# Yajilin (Even Rows/Columns) by Grant Fikes

Rules: Standard Yajilin rules. Also, an even number of cells must be shaded in each row and in each column.



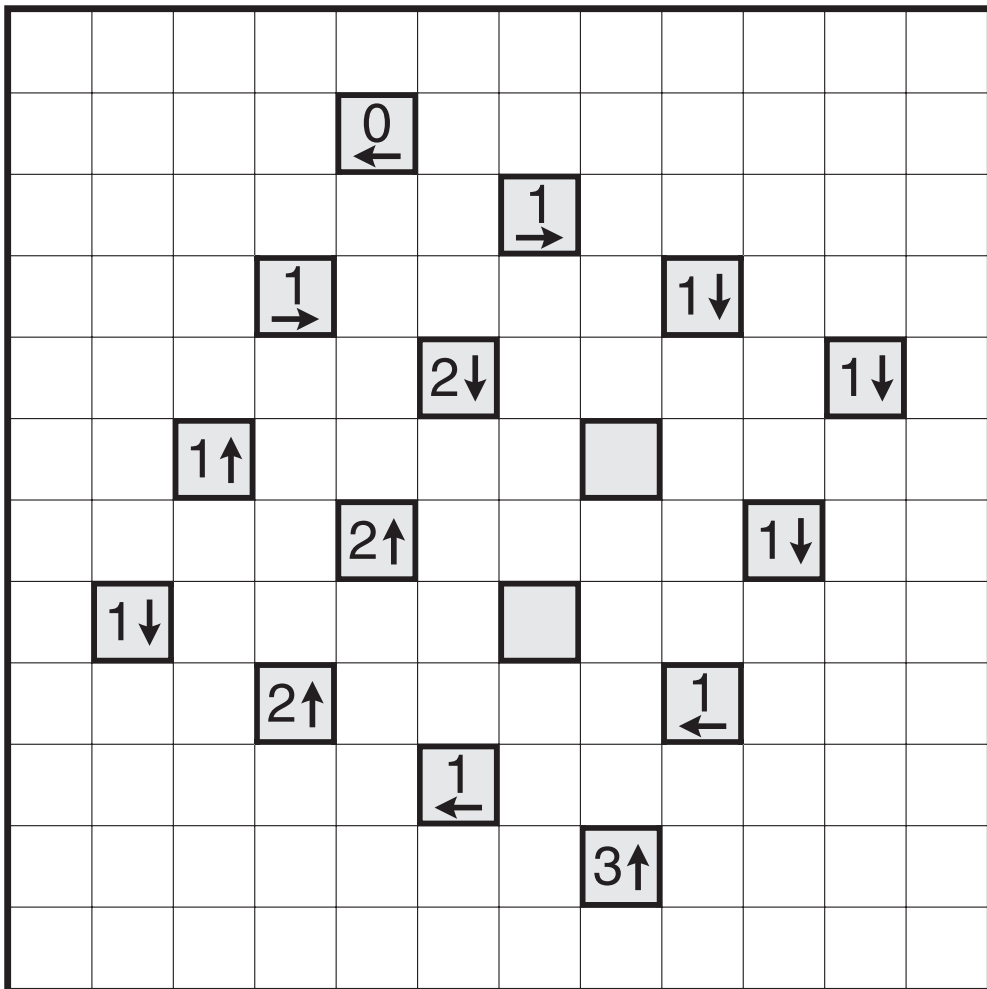
*Fortysomething?*

# Yajilin by JinHoo Ahn



*Parallel Lines*

# Yajilin by David Altizio



4x4 Grid