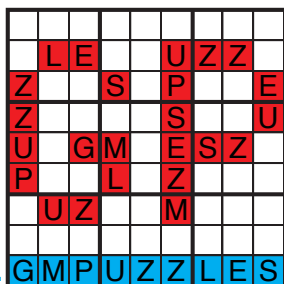




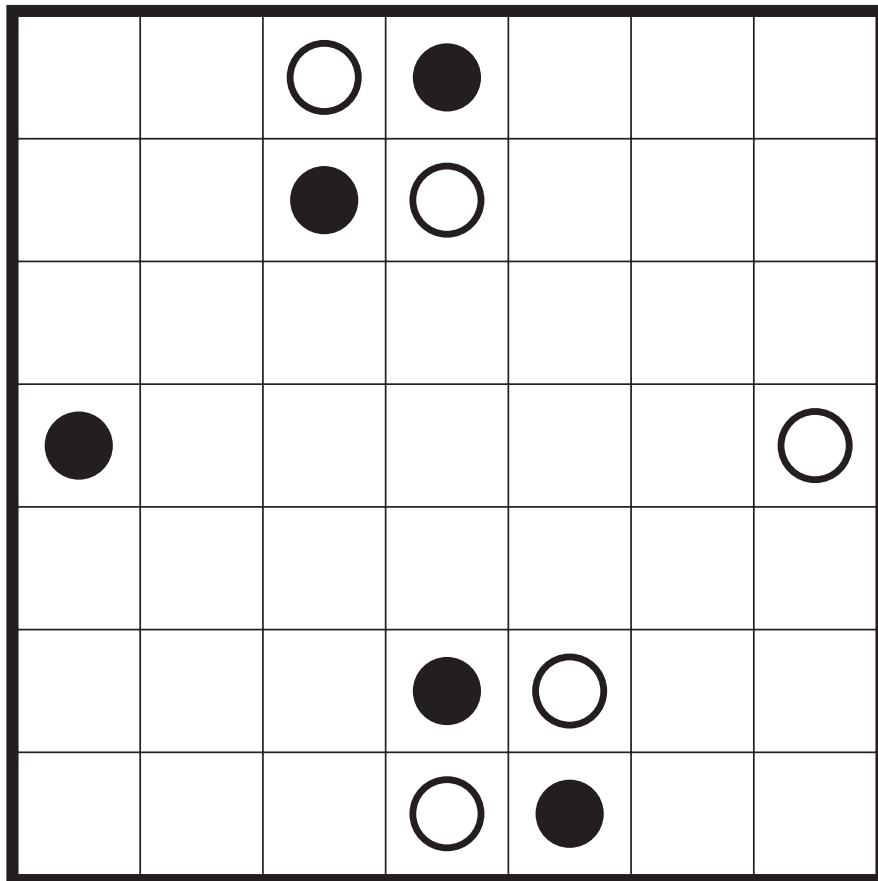
# VARIETY (STARTER PACK)

Jonas Gleim    Statue Park  
David Altizio    Fillomino  
Takeya Saikachi    Slitherlink  
Salih Alan    Skyscrapers  
Eric Fox    Aqre  
Rajesh Kumar    Thermo-Sudoku

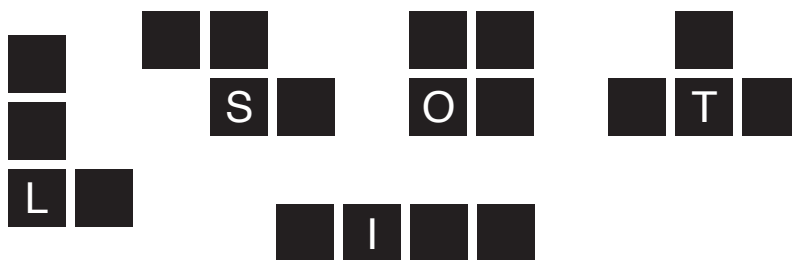
## GRANDMASTER PUZZLES



# Statue Park by Jonas Gleim



*Antisymmetry*



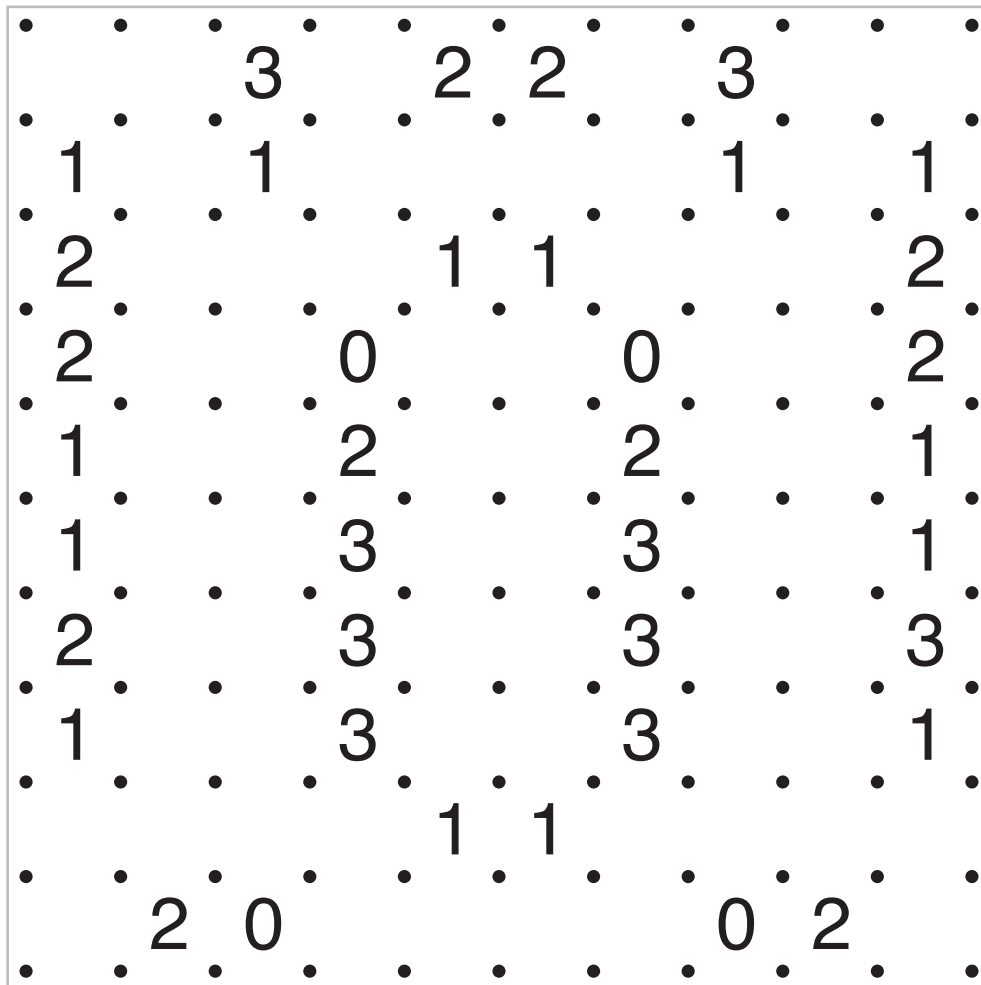
# Fillomino by David Altizio



|   |   |   |   |   |   |   |   |
|---|---|---|---|---|---|---|---|
|   |   |   |   |   |   |   |   |
|   | 1 | 2 |   |   | 2 | 1 | 4 |
| 3 | 4 |   |   |   |   |   | 3 |
|   |   |   | 2 | 4 |   |   |   |
|   |   |   | 1 | 3 |   |   |   |
| 3 |   |   |   |   |   | 4 | 3 |
| 4 | 2 | 1 |   |   | 1 | 2 |   |
|   |   |   |   |   |   |   |   |

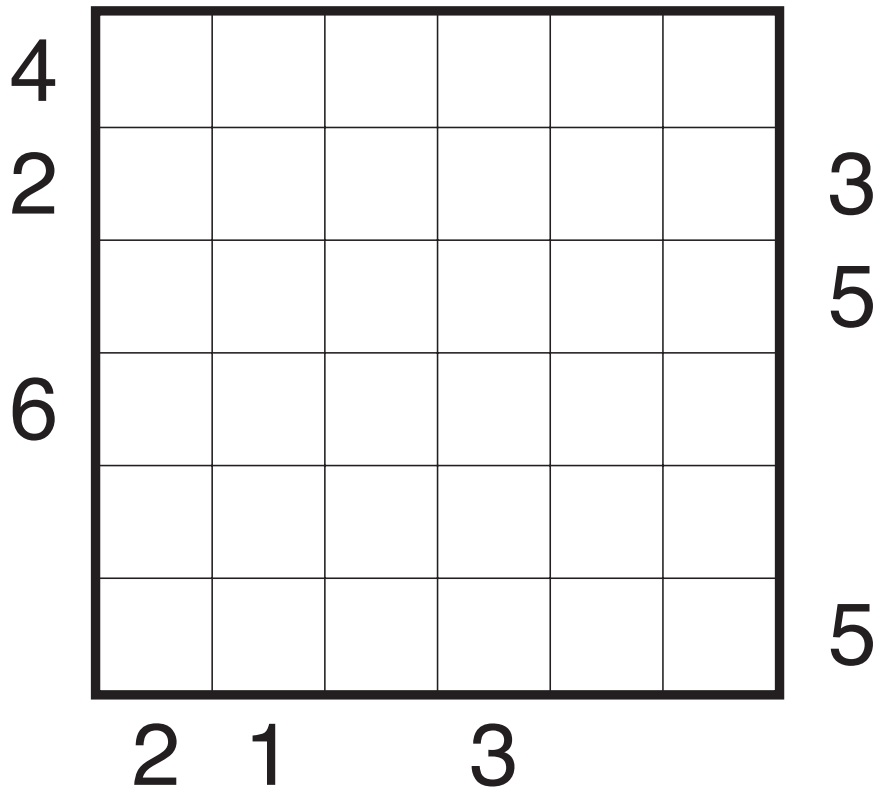
*Tetrominoes*

# Slitherlink by Takeya Saikachi



*Find the Difference*

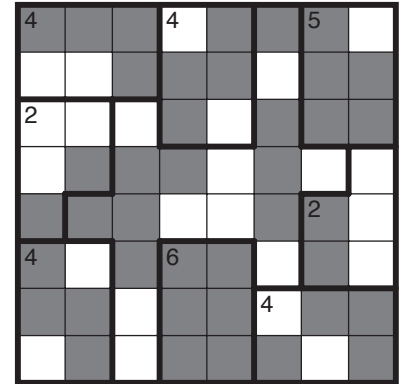
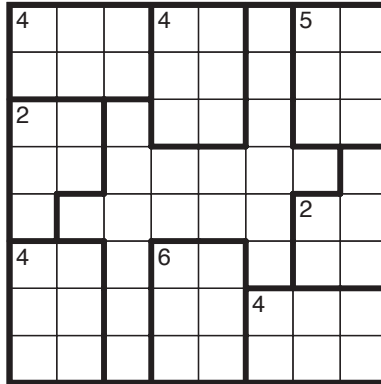
# Skyscrapers by Salih Alan



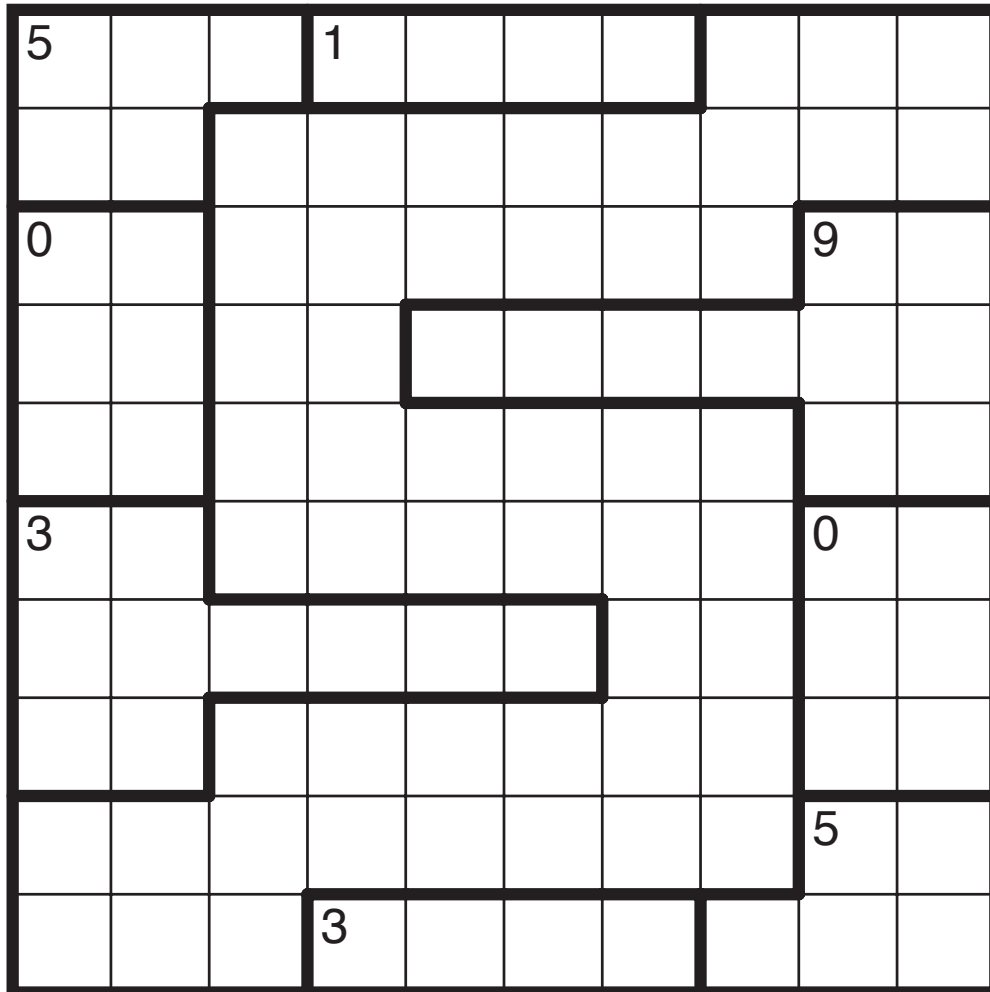
*Seven Times*

# Aqre by Eric Fox

Rules: Shade some cells so that all shaded cells form one connected group. Regions with numbers must contain the indicated count of shaded cells, and it is allowed to shade over the numbered cells. There may not exist a run of four or more consecutive shaded or unshaded cells horizontally or vertically anywhere in the grid.



Example by Serkan Yürekli



*Spiral Galaxy*

# Thermo-Sudoku by Rajesh Kumar



|   |   |   |   |   |   |   |   |
|---|---|---|---|---|---|---|---|
| 2 | 9 |   |   |   |   | 7 | 8 |
| 5 |   |   |   | 8 |   |   | 3 |
|   |   |   |   | 7 |   |   |   |
|   |   |   | 3 |   |   |   |   |
|   | 5 |   |   |   | 8 |   |   |
|   |   |   | 1 | 2 |   |   |   |
| 4 |   |   |   |   |   |   | 1 |
|   | 3 |   |   | 5 |   | 2 |   |
| 6 |   | 9 |   |   | 7 |   | 5 |

*Lion Face*