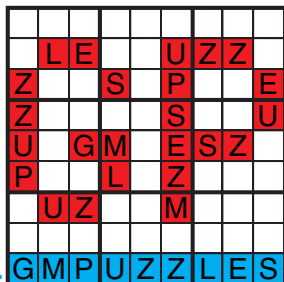




# MASTERPIECE SUDOKU MIX 7-8

Serkan Yürekli    Shape Sudoku  
Grant Fikes        Sudoku  
Akash Doulani     Sudoku  
Jonas Gleim        Sudoku  
Thomas Snyder     Multiples Sudoku  
Thomas Snyder     Shape Sudoku

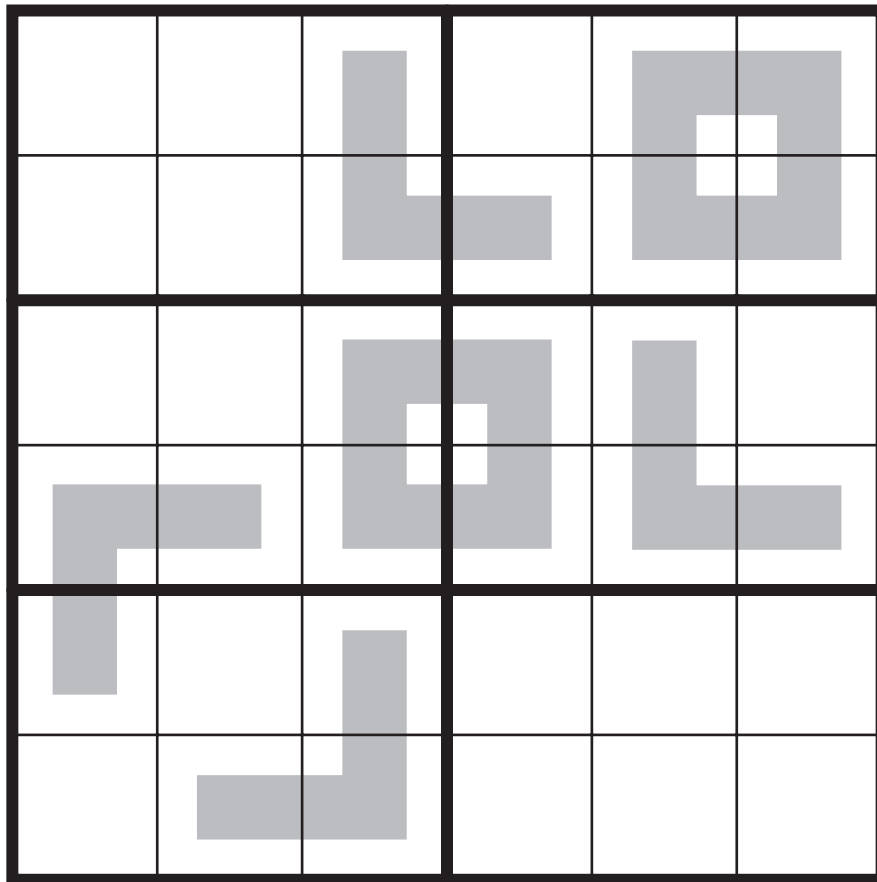
**GRANDMASTER PUZZLES**



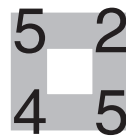
[www.GMPUZZLES.com](http://www.GMPUZZLES.com)

# Shape Sudoku by Serkan Yürekli

Rules: Standard Sudoku rules. Also, there are some numbered shapes that must be put into the grid. Shapes can be rotated, but cannot be reflected.



*Goalkeeper*



# Sudoku by Grant Fikes



		1						
	4	5	2				9	
		3				7	2	5
				1			8	
			5	9	3			
	5			4				
8	9	6				3		
	7				4	8	6	
						1		

*Crux Quadrata*

# Sudoku by Akash Doulani



7					5			
				2				
	1	2				9	8	
1			3		6			7
9			4		1			5
8			5		2			6
	7	6				3	4	
				4				
			6					9

*Zeroes*

# Sudoku by Jonas Gleim

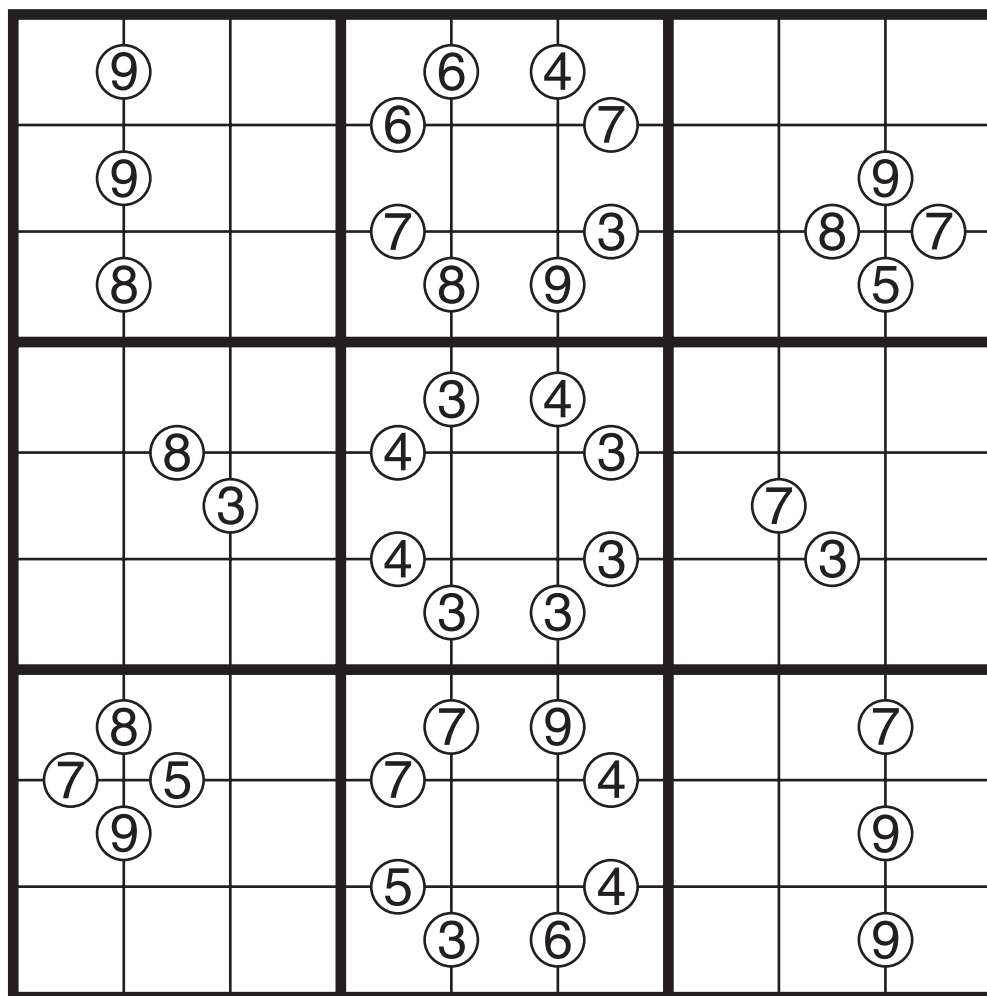


		1					6	
	8		2					9
7				3				4
	6		4					
		5				1		
					8		2	
4				7				3
2					6		4	
	9					5		

*18 Carat Diamonds*

# Multiples Sudoku by Thomas Snyder

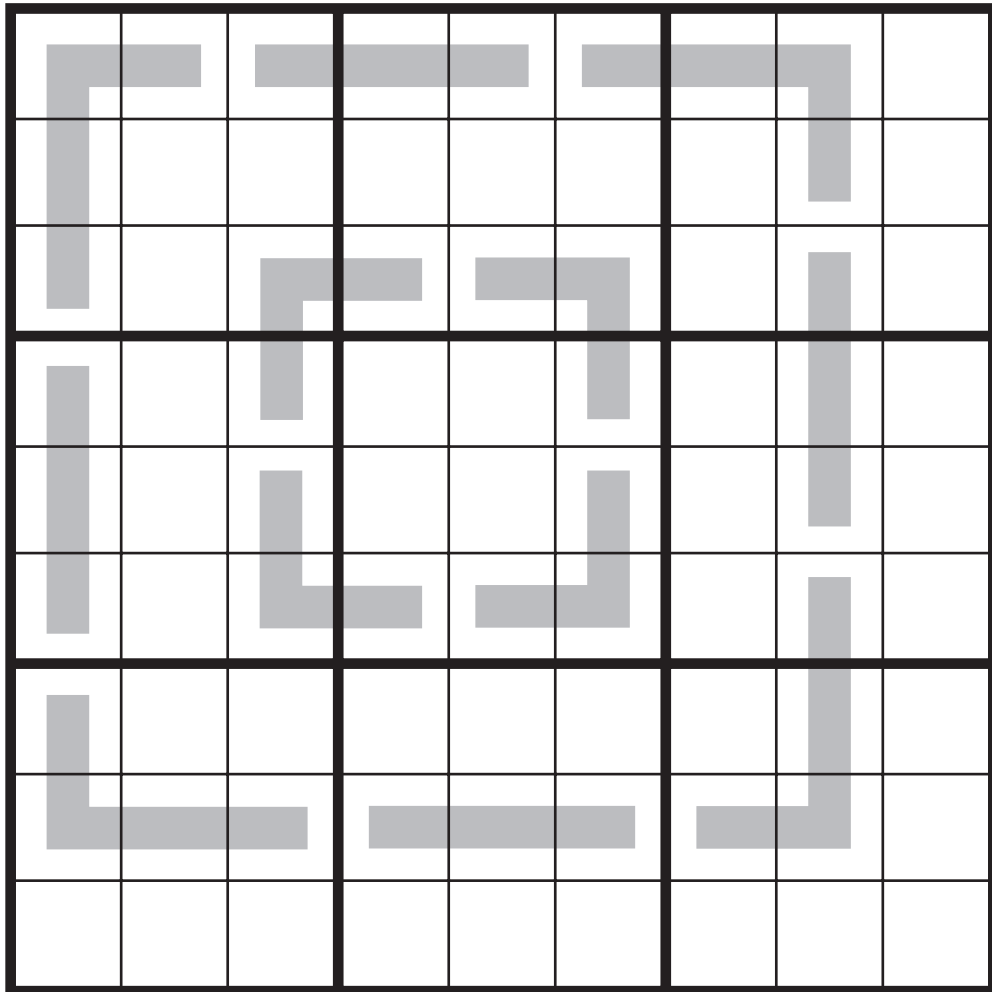
Rules: Standard Sudoku rules. Also, some numbers are given on the edges between two adjacent cells. Treating those cells as a two-digit number (reading left to right or top to bottom), the two-digit number must be a multiple of the clue. (For example, near a 7 clue, the two digits can be 14, 21, 28, 35, ....)



*Boxes*

# Shape Sudoku by Thomas Snyder

Rules: Standard Sudoku rules. Also, there are some numbered shapes that must be put into the grid. Shapes can be rotated, but cannot be reflected.



*Offset Frame*

