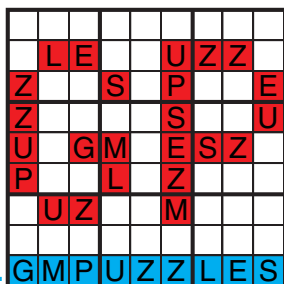




BALANCE LOOP

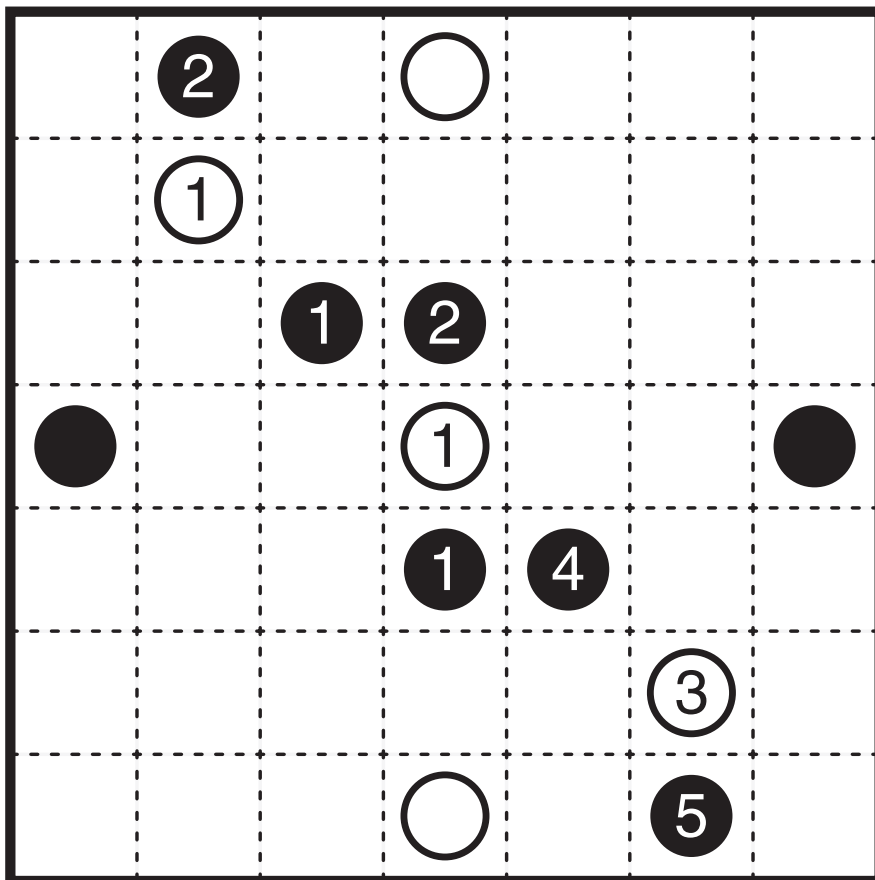
- Bryce Herdt Balance Loop (Half Balance)
- Grant Fikes Balance Loop
- Murat Can Tonta Balance Loop
- Serkan Yürekli Balance Loop (Either/or)
- wormsofcan Balance Loop
- Prasanna Seshadri Balance Loop (Inequality)

GRANDMASTER PUZZLES



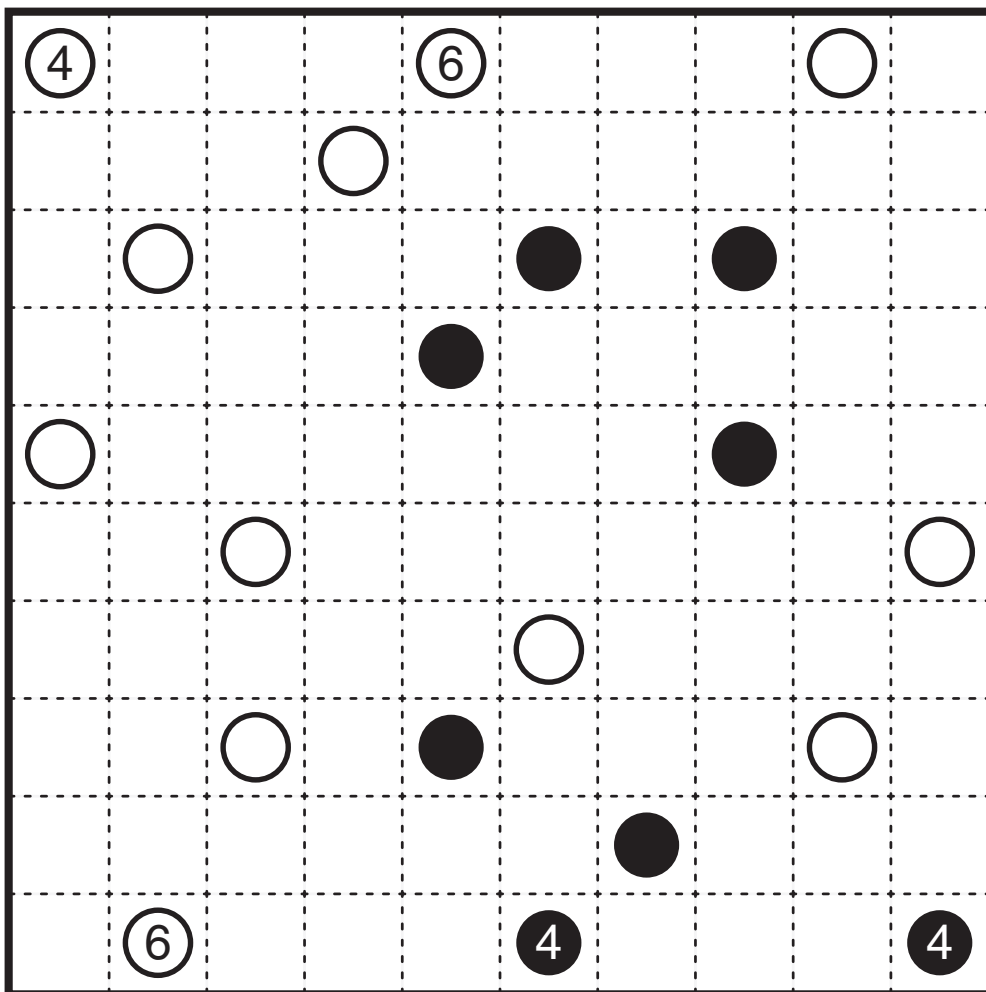
Balance Loop (Half Balance) by Bryce Herdt

Rules: Variation of Balance Loop rules. Numbers, where given, indicate one of the loop segment lengths on both sides of the circle. All other rules for the loop are the same as usual.



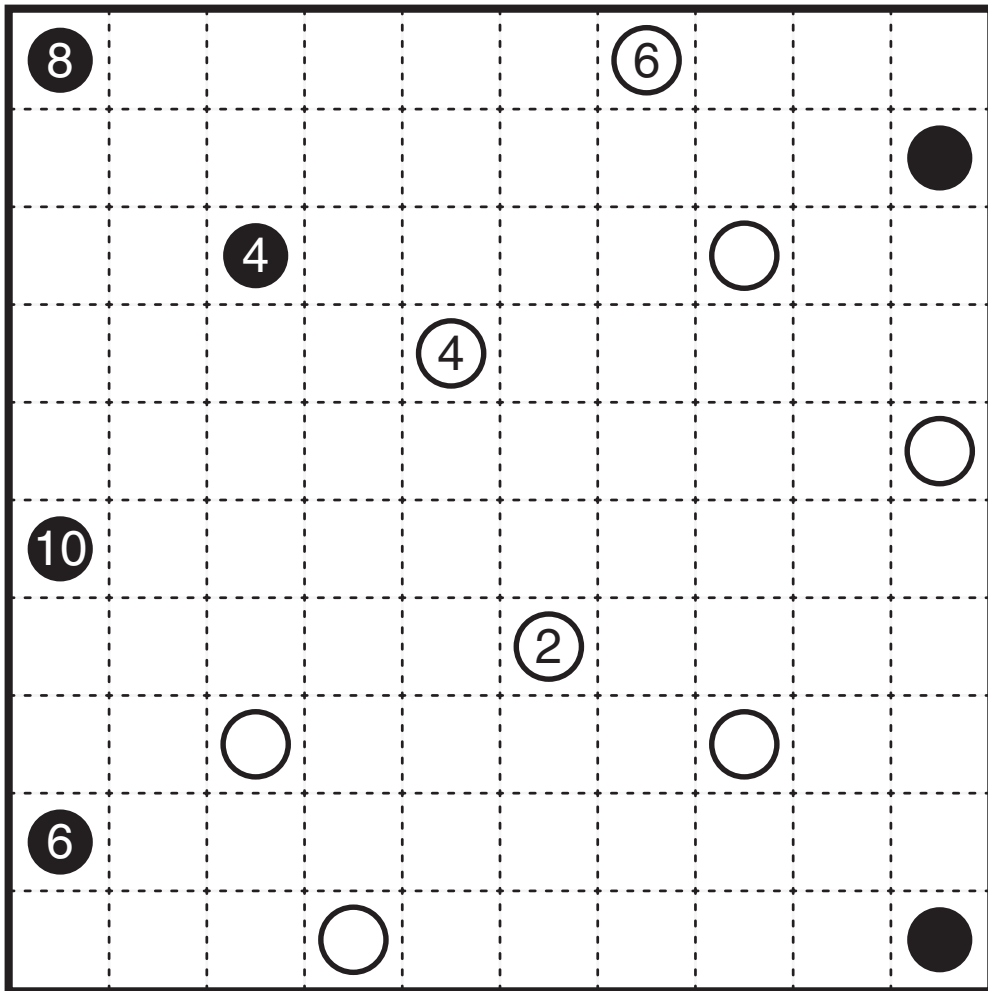
BALANCE (coded)

Balance Loop by Grant Fikes



Fours and Sixes

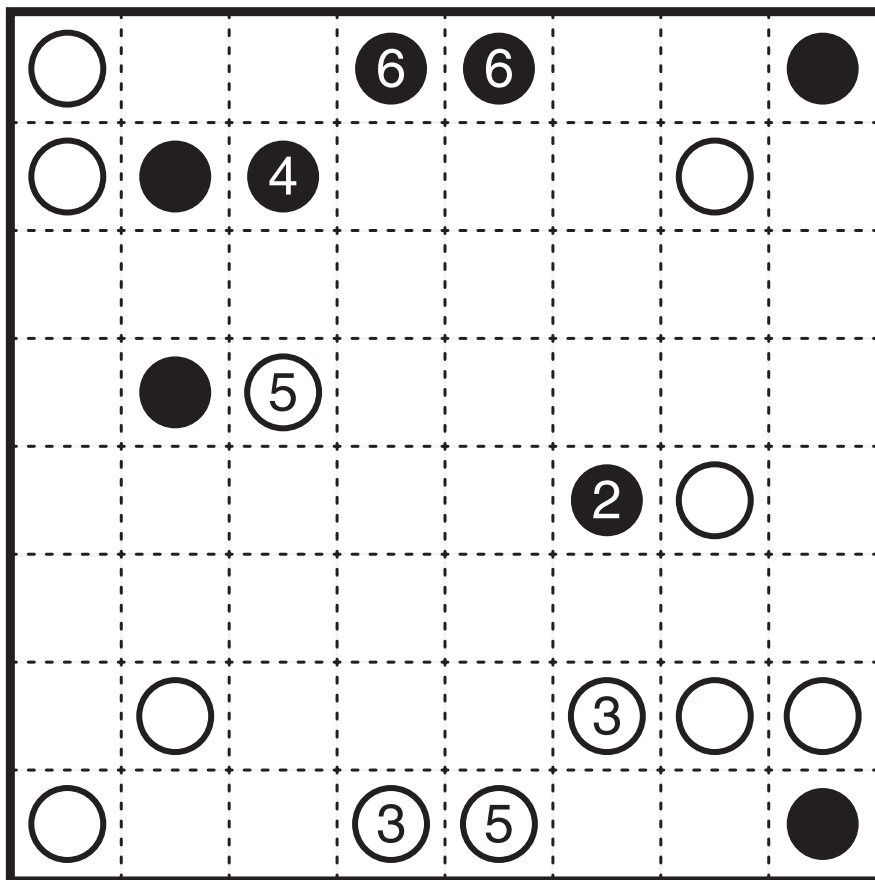
Balance Loop by Murat Can Tonta



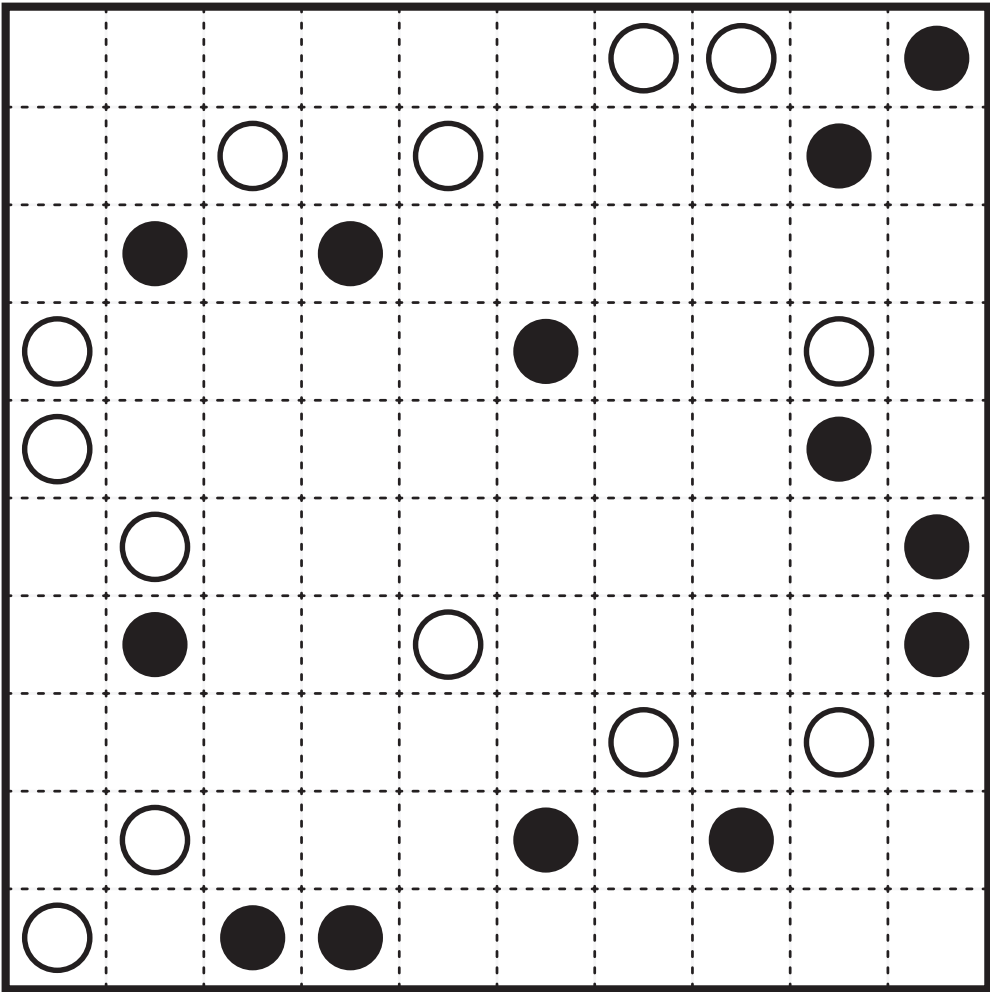
Incompatibility

Balance Loop (Either/Or) by Serkan Yürekli

Rules: Variation of Balance Loop rules. Each circle clue has either an incorrect color or an incorrect number. If the color is incorrect, the real clue should have the opposite color. If the number is incorrect, the real clue should have a number one more or one less than the given number.



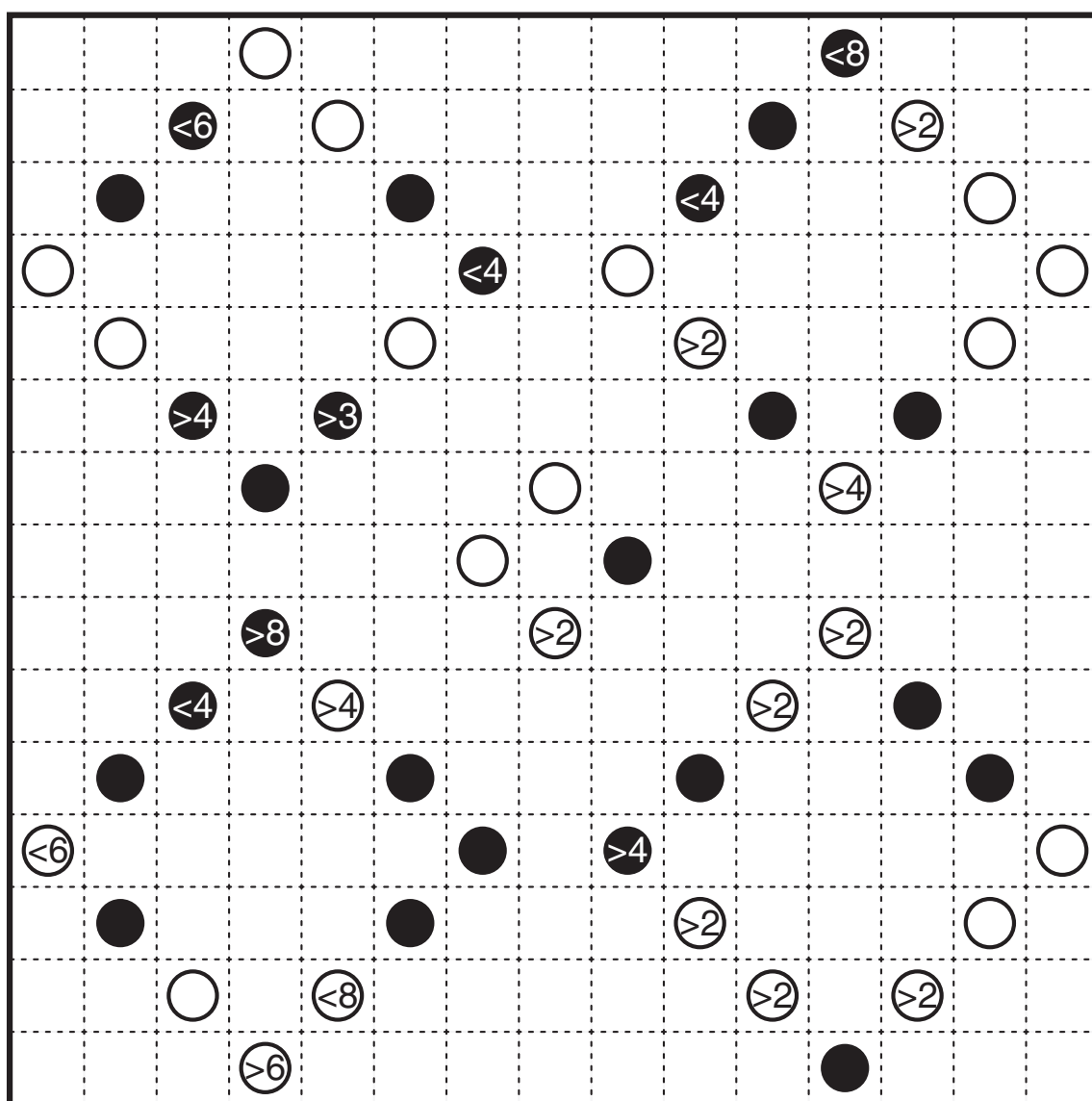
Balance Loop by wormsofcan



Antisymmetry

Balance Loop (Inequality) by Prasanna Seshadri

Rules: Standard Balance Loop rules. Also, number clues are not fully specified and must strictly follow the inequality values given.



Diamonds