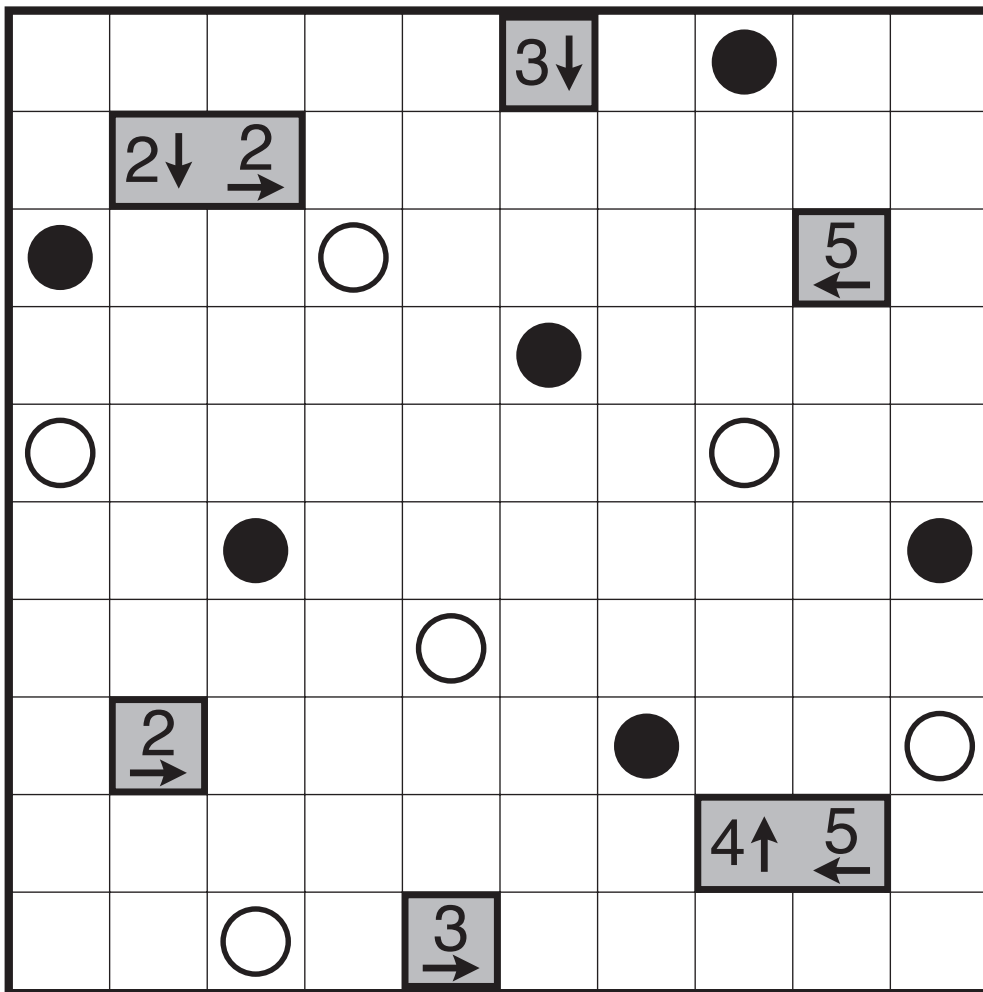


# Castle Wall (Masyu) by Mark Sweep

Rules: Standard Castle Wall rules, but none of the clue colors are given. The solver should determine whether each gray clue is white or black. Also, the loop must go straight through the cells with white circles, with a turn in at least one of the cells immediately before/after each white circle. The loop must make a turn in all the black circles, but must go straight in both cells immediately before/after each black circle.



*Antisymmetry*