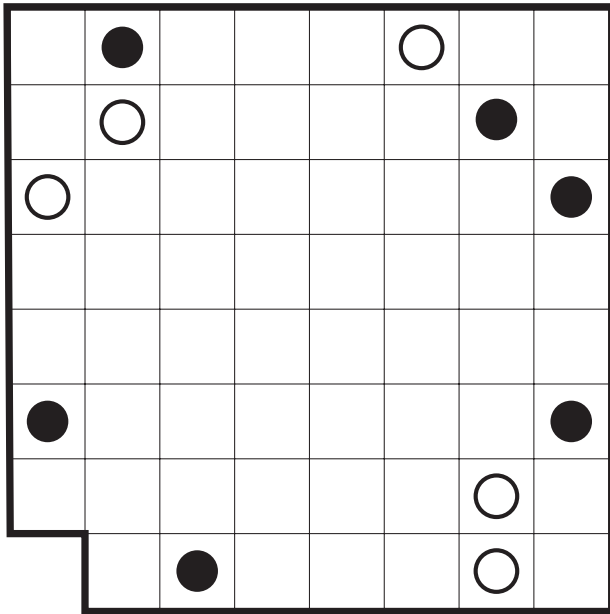


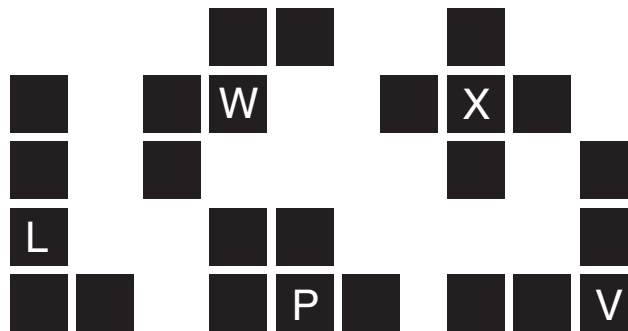
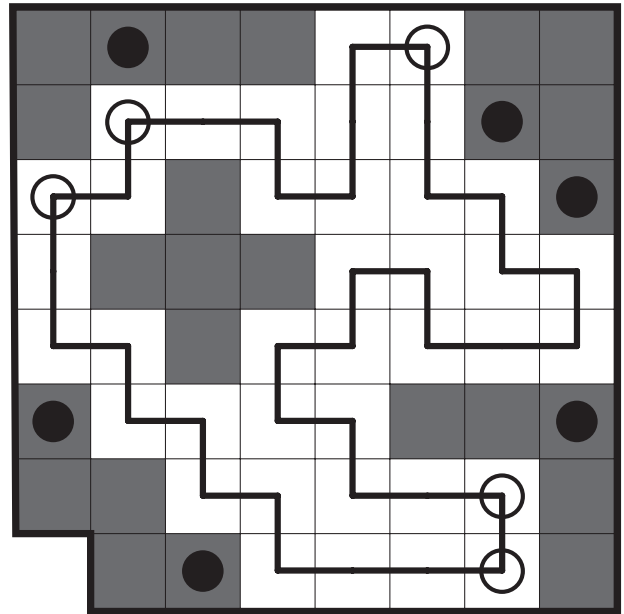
# Statue Park (Loop) by John Bulten

Rules: Place each of the twelve pentominoes into the grid once, with rotations and reflections allowed. No two pentominoes can overlap or be orthogonally adjacent, and all cells not occupied by the pentominoes must be traversed by a single, closed loop (connecting cells horizontally or vertically). The black circles indicate some cells that must be covered by pentominoes, white circles indicate spaces that may not be contained in pentominoes and must be part of the loop.

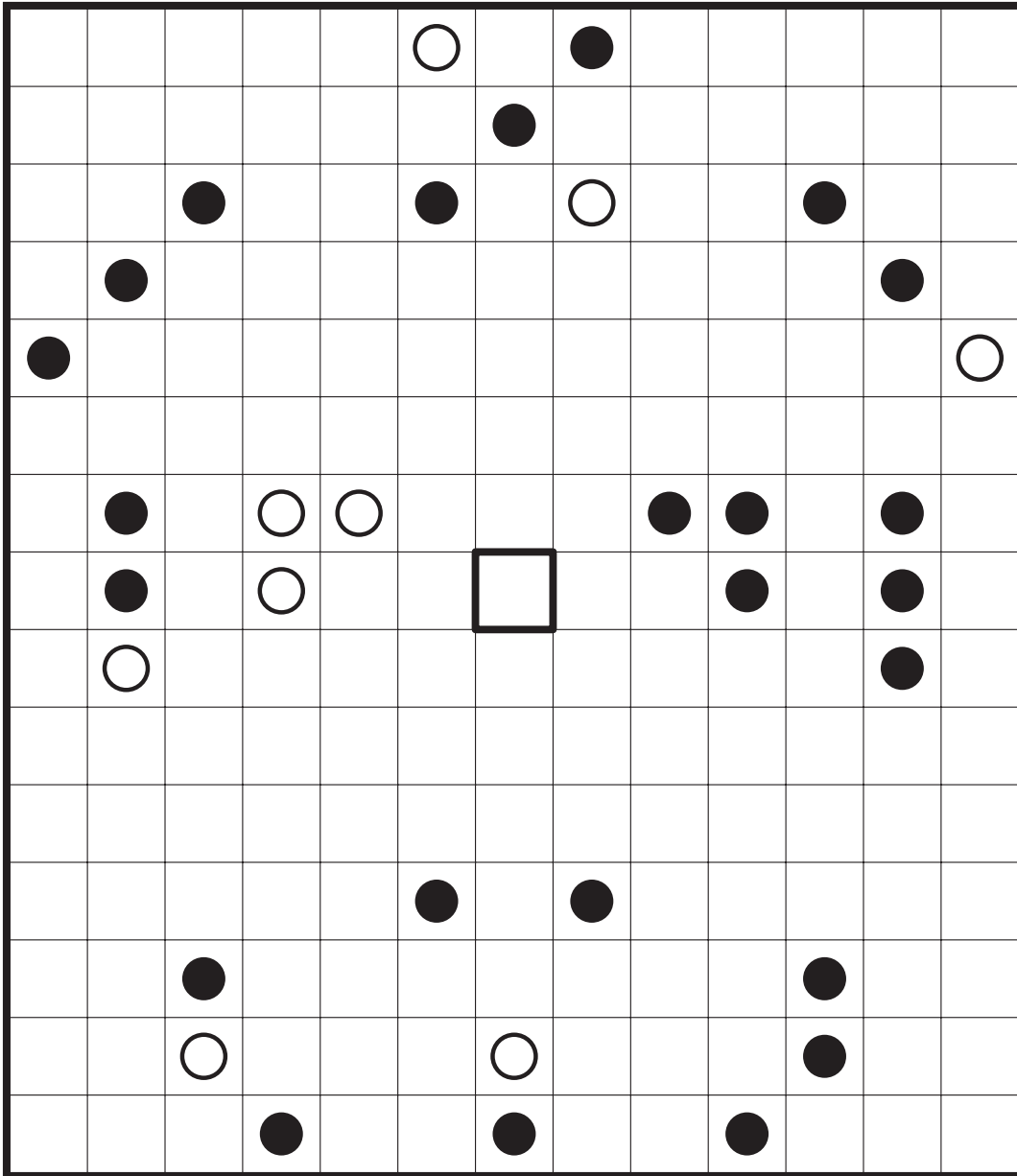
Example



Solution



# Statue Park (Loop) by John Bulten



*Pent-Up Rage*

