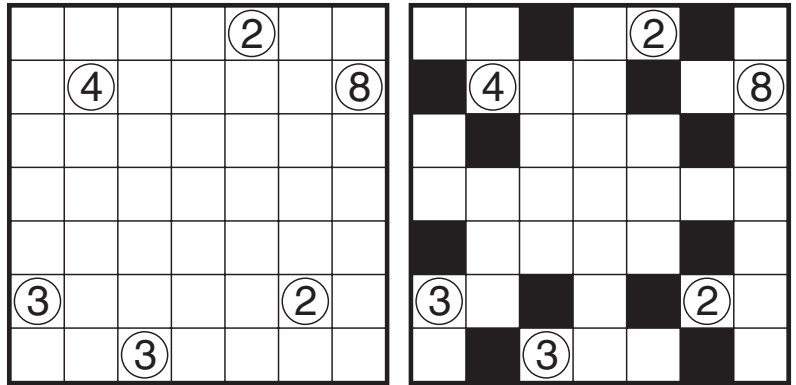
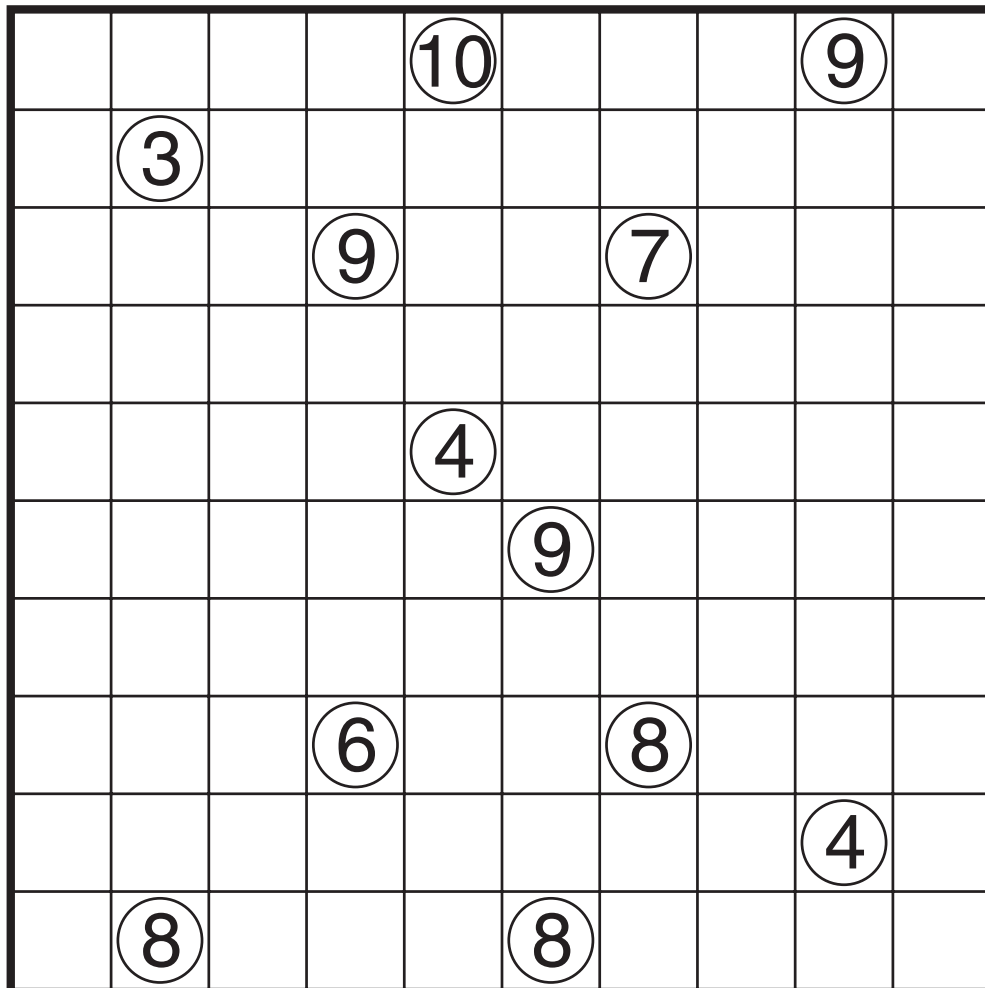


Kuromasu (Even Rows/Columns) by Prasanna Seshadri

Rules: Shade some empty cells black so that each number indicates the total count of white cells connected vertically and horizontally to that number including the numbered cell itself. Black cells cannot share an edge, and all white cells must belong to a single connected group. Also, an even number of cells must be shaded in each row and in each column.



Example by Serkan Yürekli



Missing 5