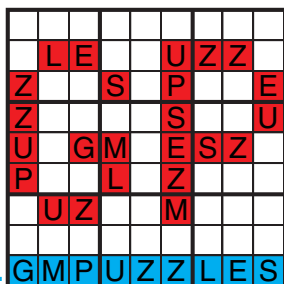




SUDOKU

- Serkan Yürekli Tight Fit Sudoku
Rajesh Kumar Sudoku
JinHoo Ahn Thermo Arrow Sudoku
Grant Fikes Consecutive Pairs Sudoku
Thomas Snyder Sudoku
Michael Rios Arrow/Killer/Kropki/Thermo-Sudoku

GRANDMASTER PUZZLES



Tight Fit Sudoku by Serkan Yürekli



	2 /	4 /	/ 5		
/				4 /	/ 7
/ 3		8 /		/ 7	
	4 /		/ 3		6 /
6 /	/ 3				/
		2 /	/ 7	/ 9	

Even Top Odd Bottom

Sudoku by Rajesh Kumar

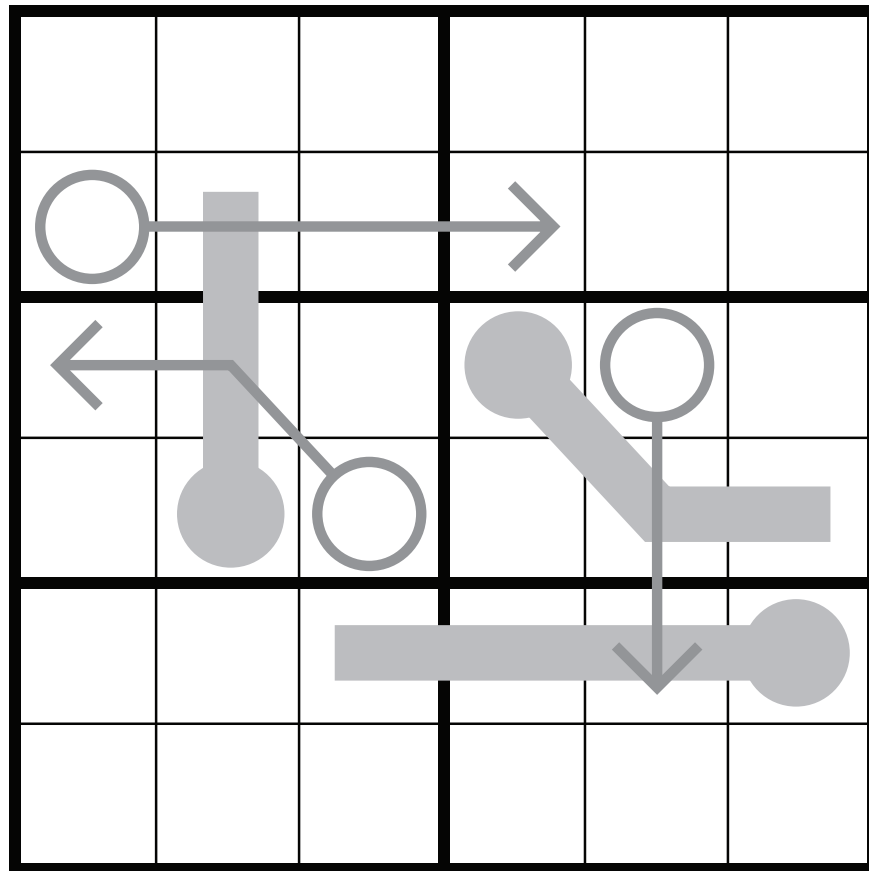


	2				4		7	
1		3		9		4		5
	8				5		9	
6		4						
	5						2	
						1		3
	4		2				1	
5		2		4		9		7
	6		9				8	

Dumbbells

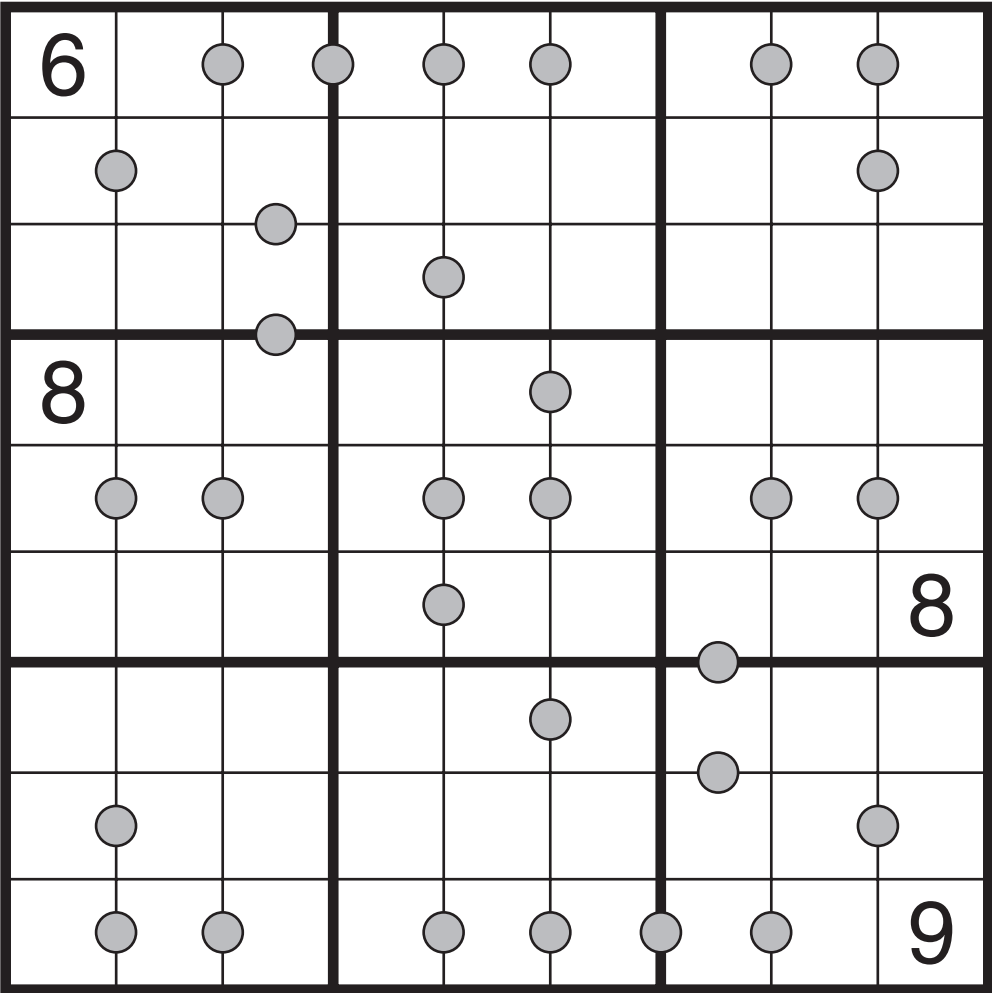
Arrow/Thermo-Sudoku by JinHoo Ahn

Rules: Standard Arrow Sudoku rules and Thermo-Sudoku rules.



Antisymmetry

Consecutive Pairs Sudoku by Grant Fikes



Complete Symmetry

Sudoku by Thomas Snyder

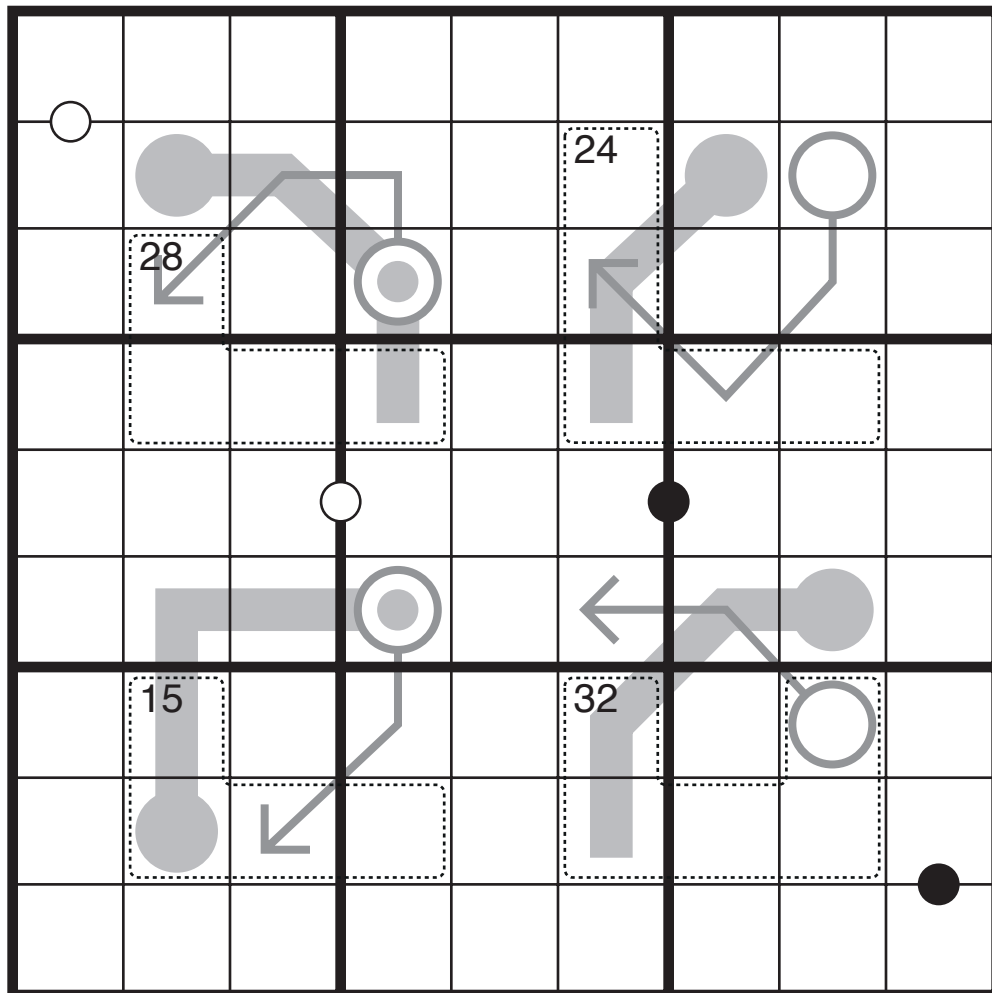


					1	2	3	
					4	5	6	
	4	6	7					
	5	8	9					
					6	4	2	
					2	1	8	
	8	2	3					
	7	3	6					

2x3x4

Arrow/Killer/Kropki/Thermo-Sudoku by Michael Rios

Rules: Classic Sudoku Rules. Some arrow shapes are in the grid; the sum of the digits along the path of each arrow must equal the digit in the circled cell (digits can repeat on an arrow). Some cages are in the grid marked by dashed lines; the sum of the digits in these cages must equal the value given in the upper-left corner of that cage (digits cannot repeat inside a cage). Some dots are given between two cells; a white dot shows that the digits in those cells are consecutive and a black dot shows that the digit in one of the cells has twice the value of the other (adjacent cells without dots may or may not follow these rules). Finally, some thermometer shapes are in the grid; the digits along the thermometer must be strictly increasing from the round bulb to the flat end.



Square Knots