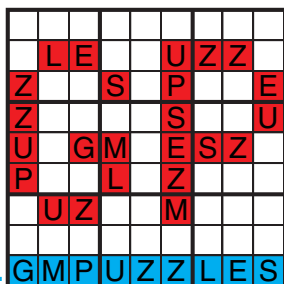




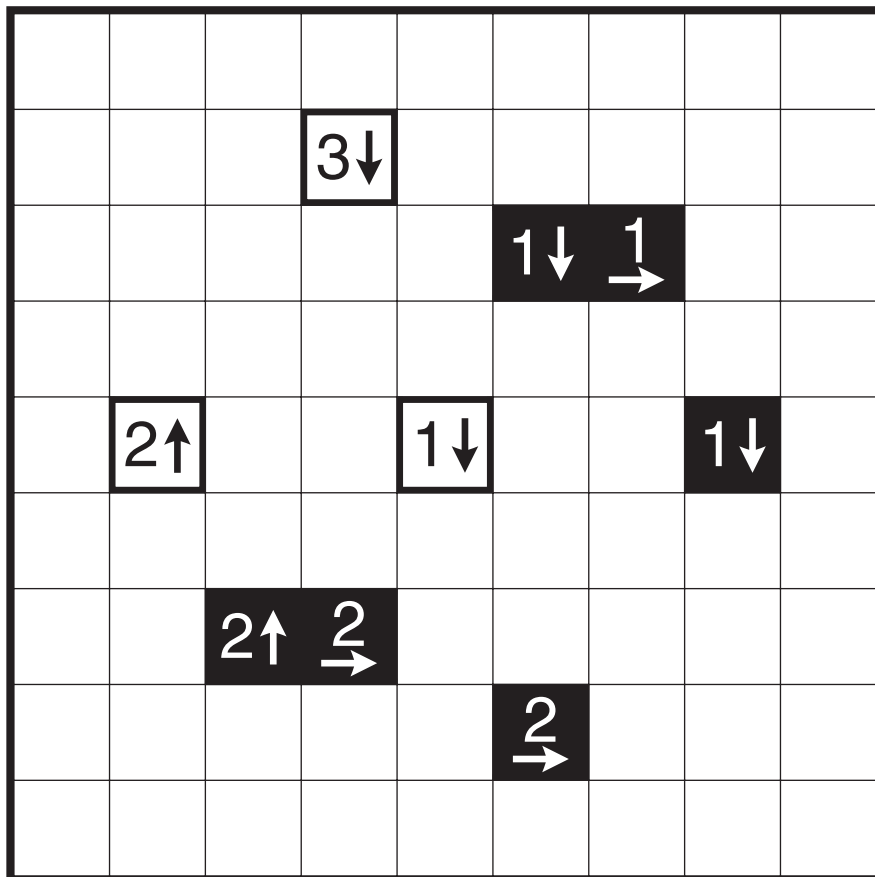
CASTLE WALL

Murat Can Tonta	Castle Wall
Prasanna Seshadri	Castle Wall
JinHoo Ahn	Castle Wall
Serkan Yürekli	Castle Wall
Mark Sweep	Castle Wall (Masyu)
Joseph Howard	Castle Wall

GRANDMASTER PUZZLES

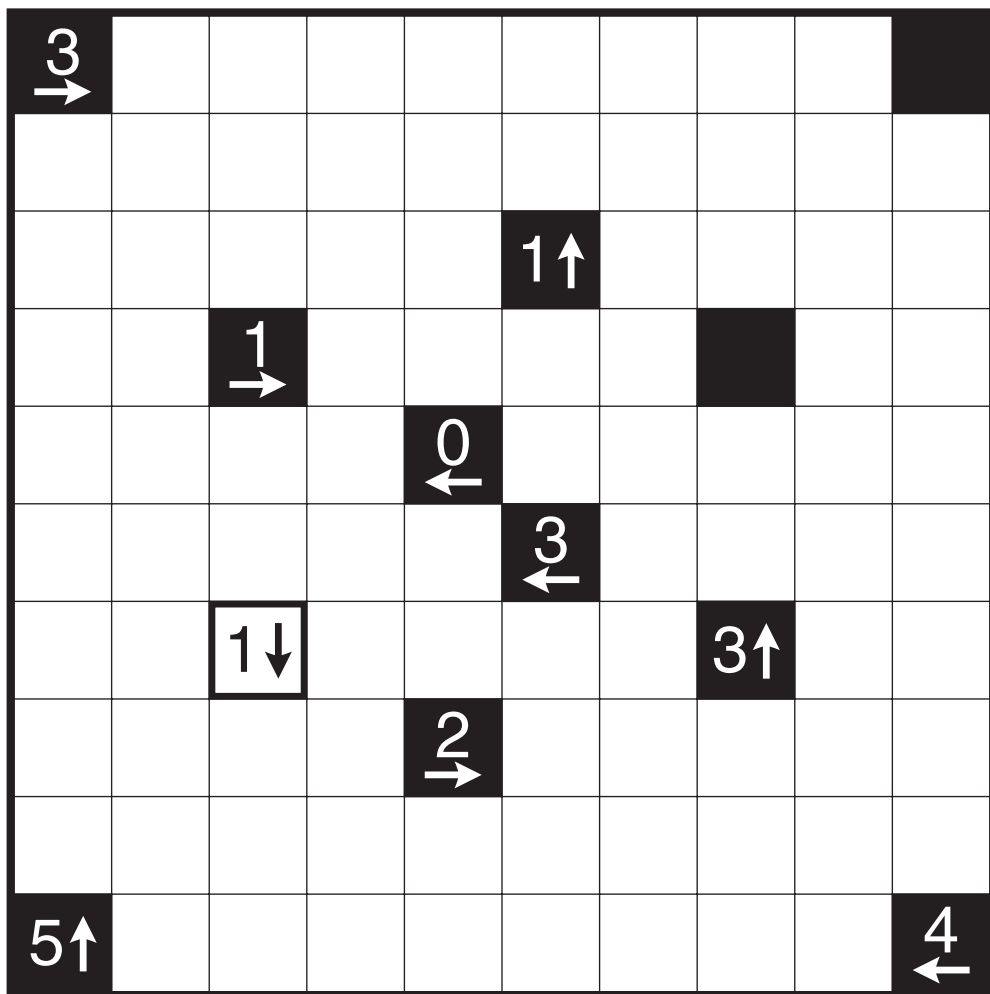


Castle Wall by Murat Can Tonta



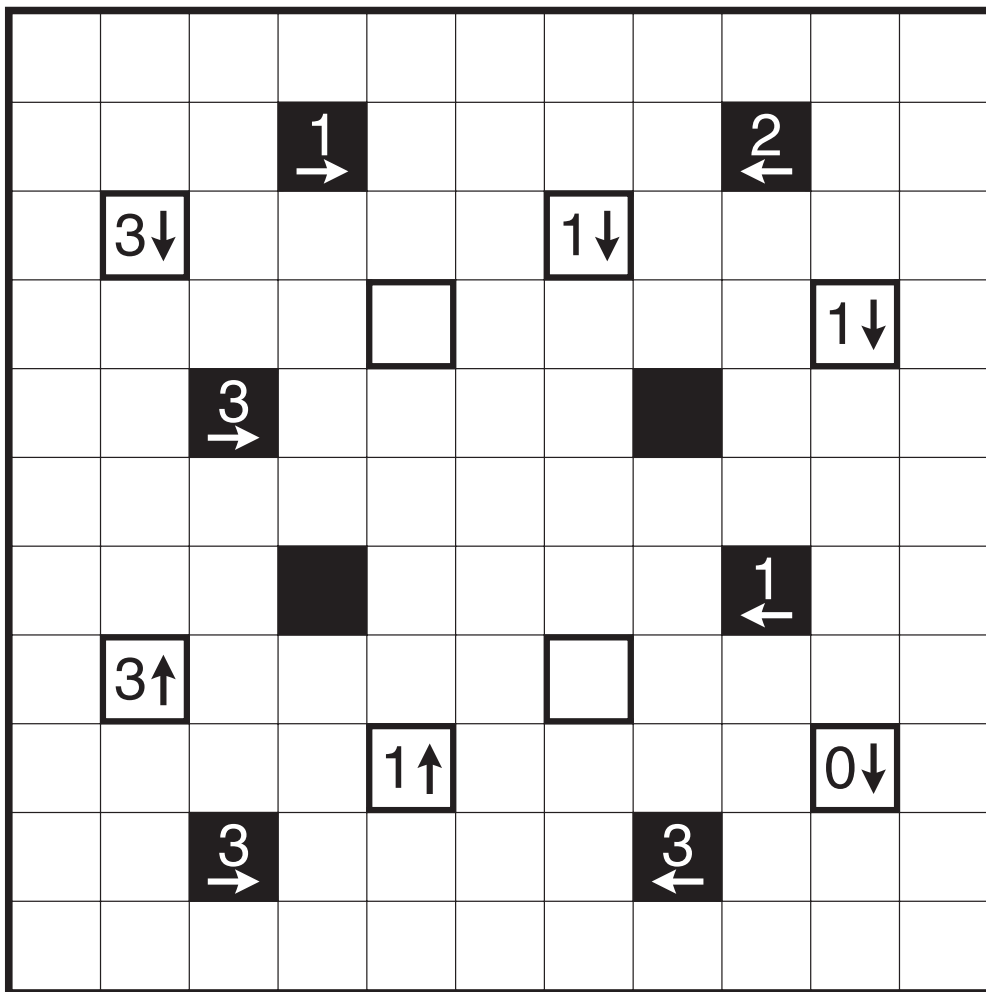
One Gear

Castle Wall by Prasanna Seshadri



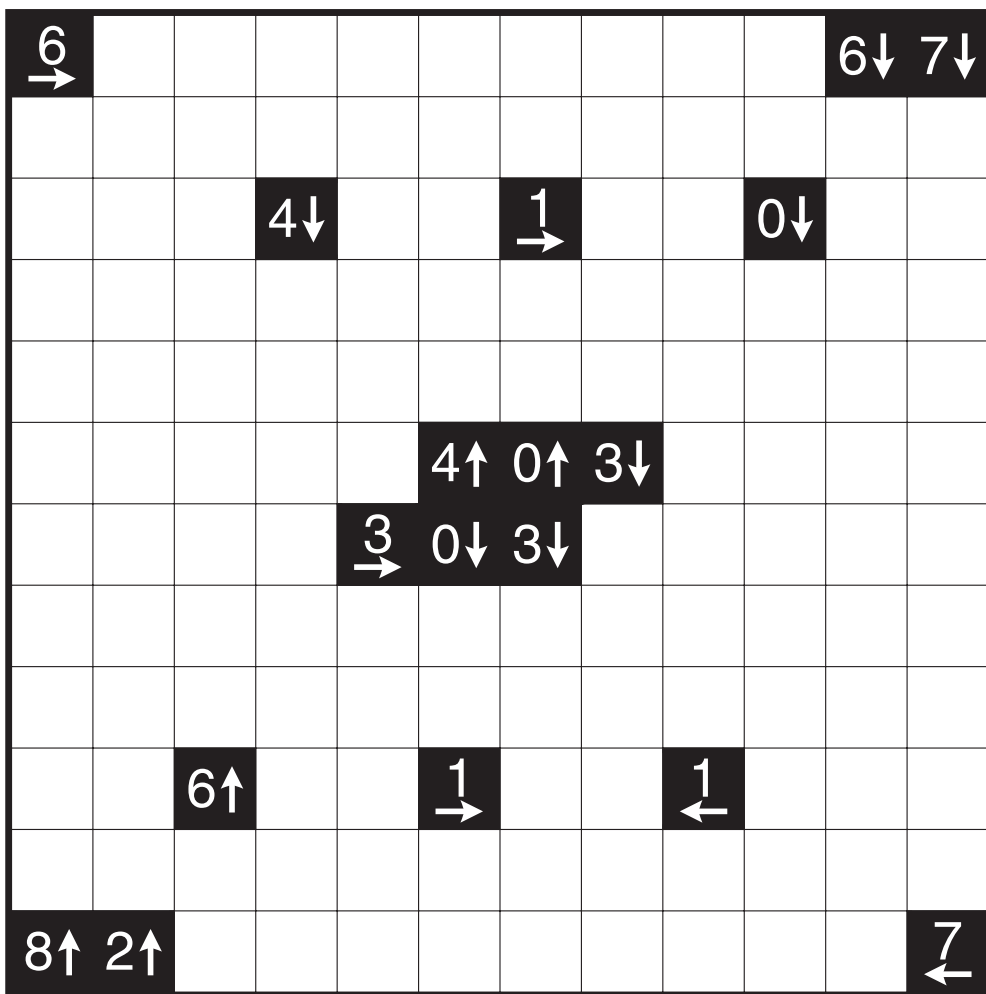
One True King

Castle Wall by JinHoo Ahn



Slanted Squares

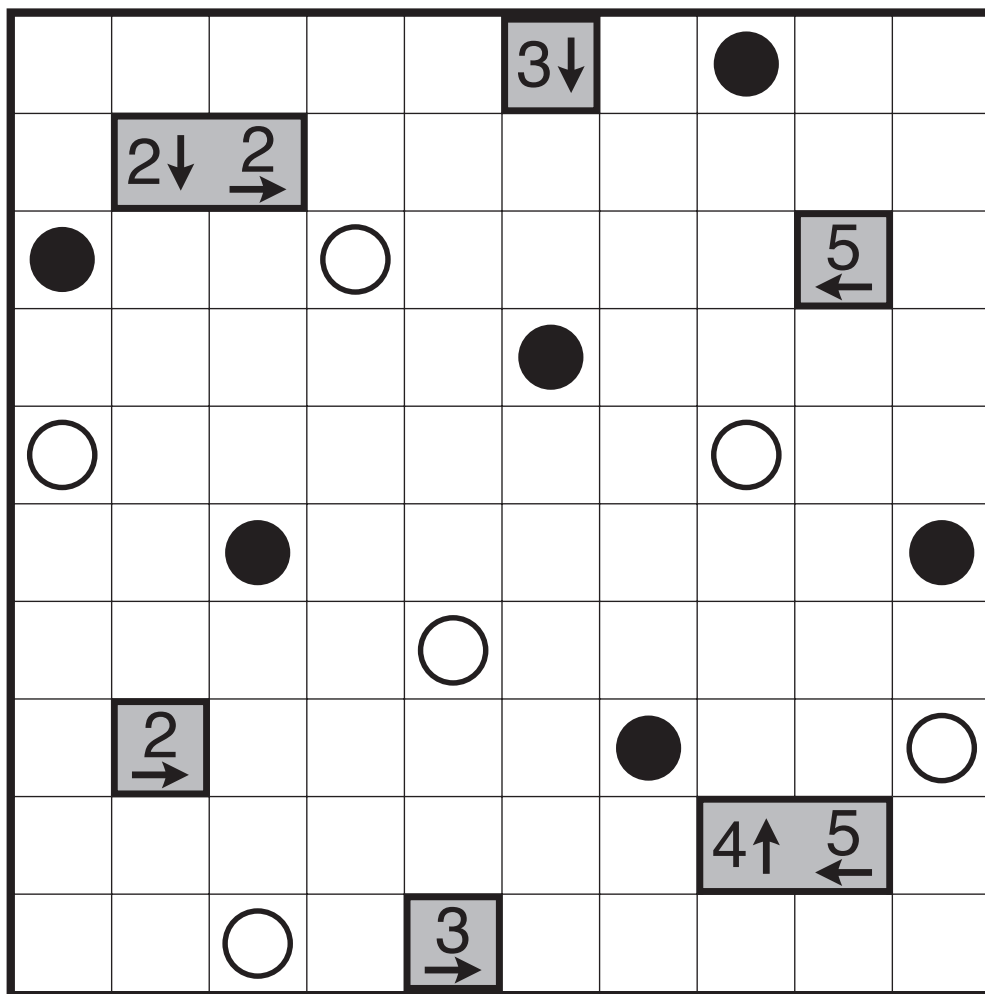
Castle Wall by Serkan Yürekli



Black Mirror

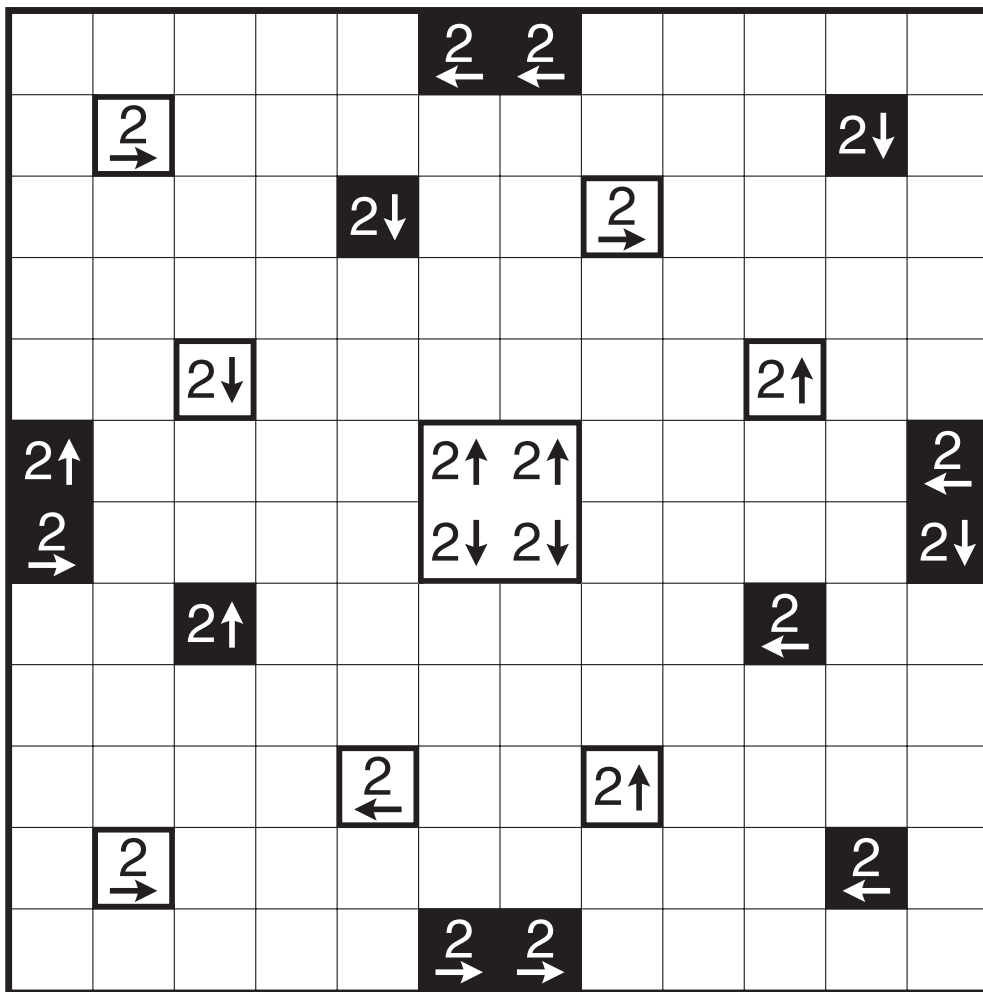
Castle Wall (Masyu) by Mark Sweep

Rules: Standard Castle Wall rules, but none of the clue colors are given. The solver should determine whether each gray clue is white or black. Also, the loop must go straight through the cells with white circles, with a turn in at least one of the cells immediately before/after each white circle. The loop must make a turn in all the black circles, but must go straight in both cells immediately before/after each black circle.



Antisymmetry

Castle Wall by Joseph Howard



Twos