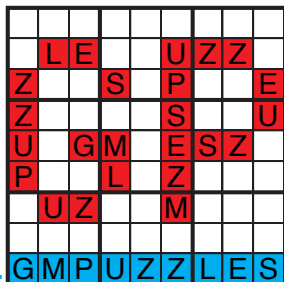




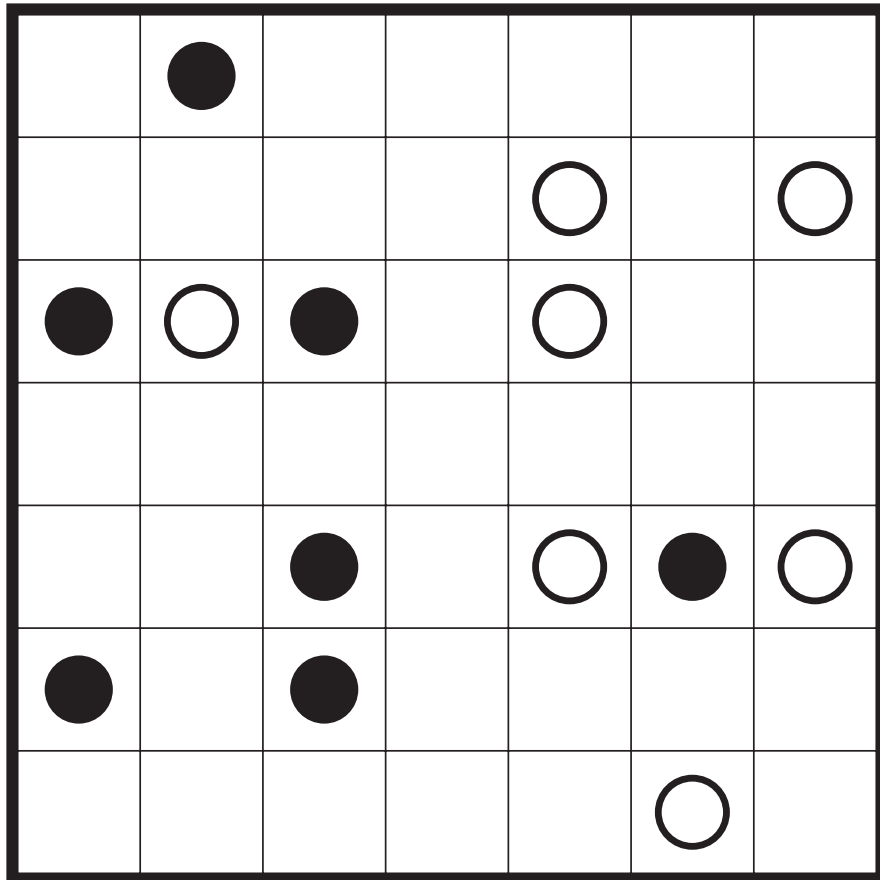
STATUE PARK

Prasanna Seshadri	Statue Park
Serkan Yürekli	Statue Park
JinHoo Ahn	Statue Park
Ashish Kumar	Statue Park
John Bulten	Statue Park (Loop)
Murat Can Tonta	Statue Park

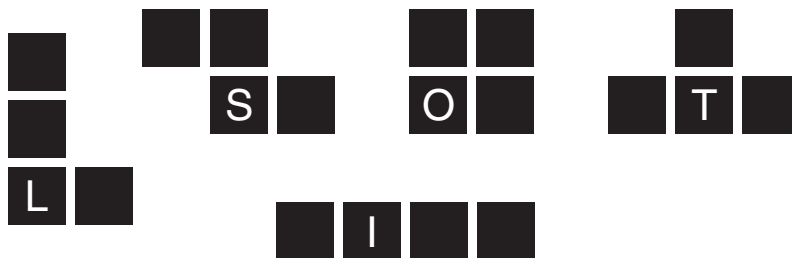
GRANDMASTER PUZZLES



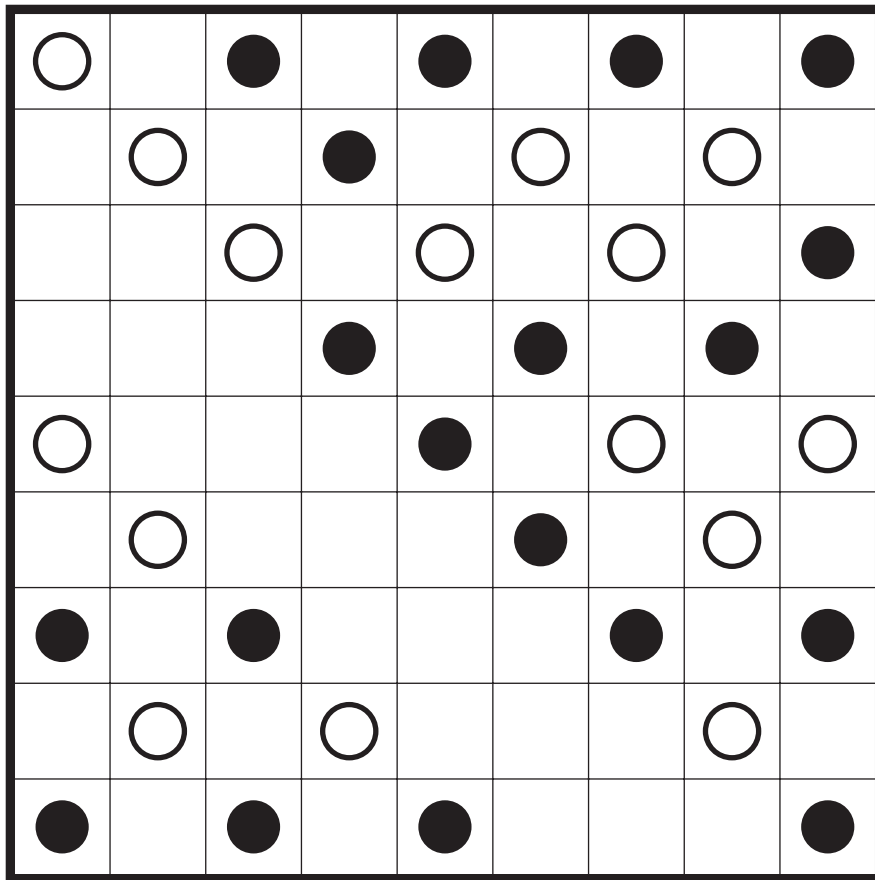
Statue Park by Prasanna Seshadri



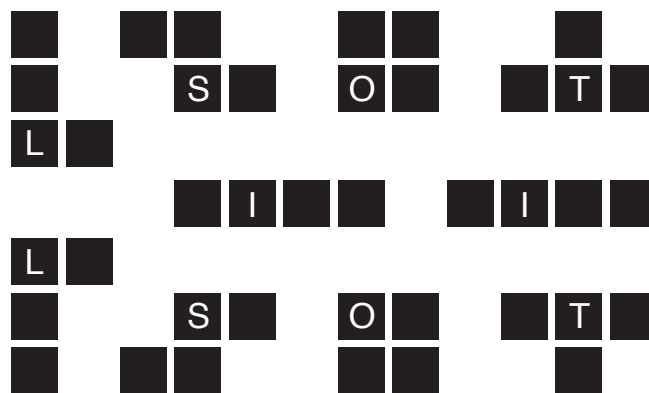
Antisymmetry



Statue Park by Serkan Yürekli



Tiny Gap

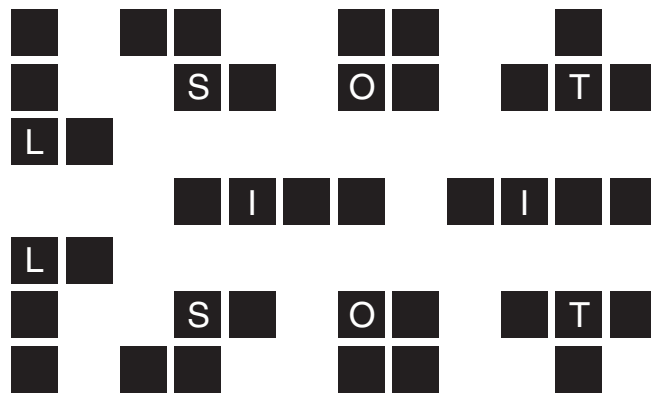


Statue Park by JinHoo Ahn

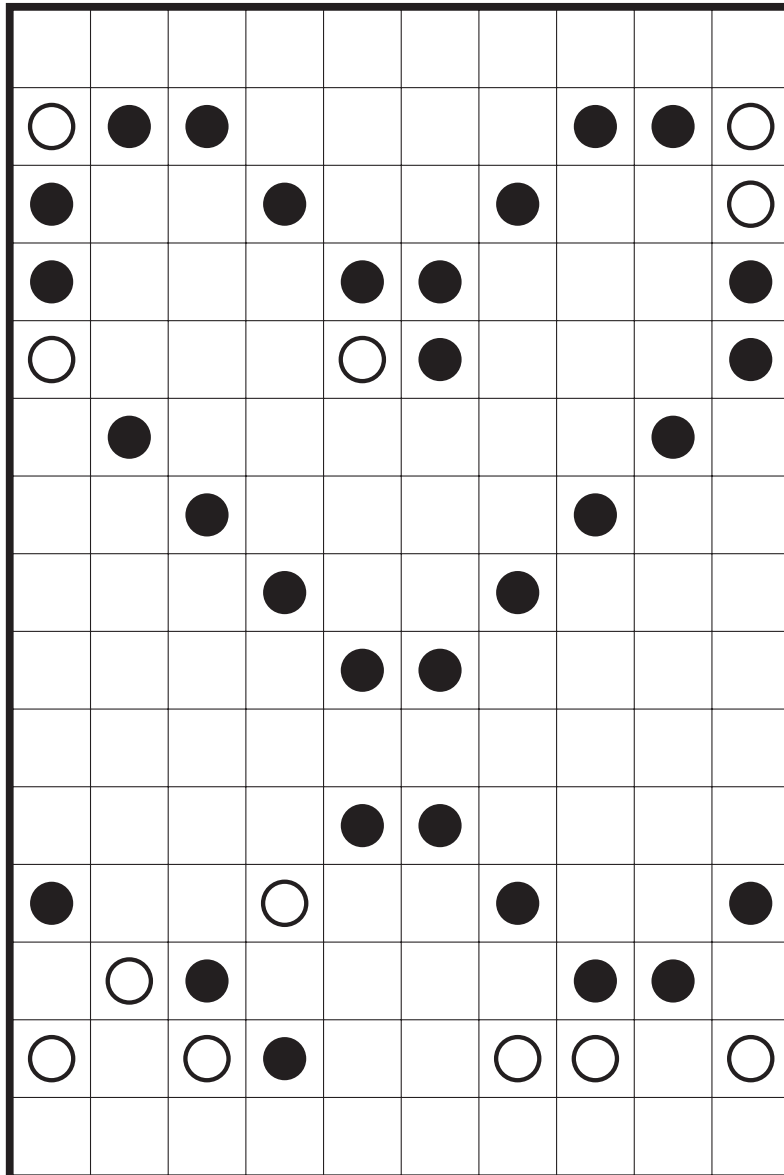


				●	○				
				○			●	○	
●	○						○		
○									
				●	○		●	○	
●	○			○			○		
○									
		●	○					●	○
		○			●	○		○	
					○				

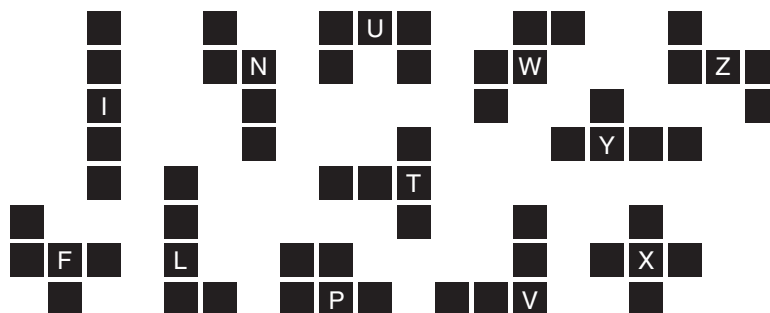
Molecules



Statue Park by Ashish Kumar



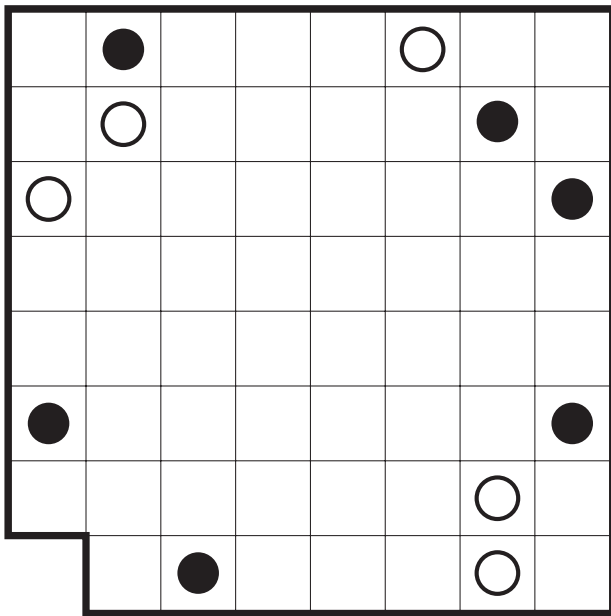
Love Stand



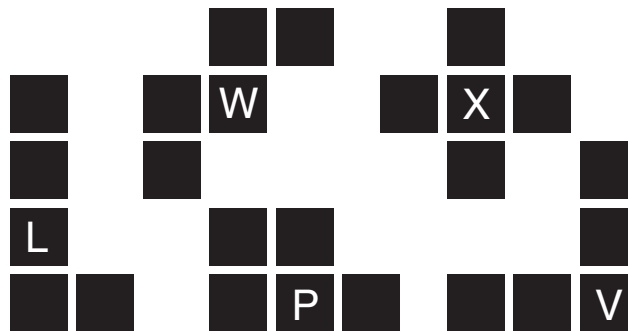
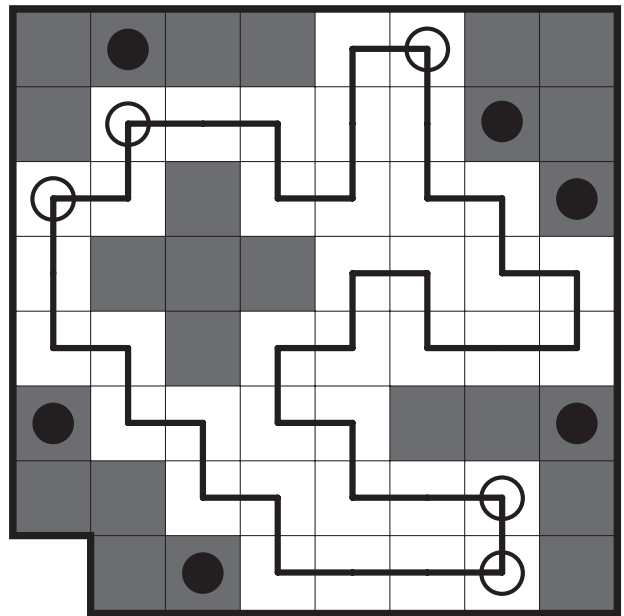
Statue Park (Loop) by John Bulten

Rules: Place each of the twelve pentominoes into the grid once, with rotations and reflections allowed. No two pentominoes can overlap or be orthogonally adjacent, and all cells not occupied by the pentominoes must be traversed by a single, closed loop (connecting cells horizontally or vertically). The black circles indicate some cells that must be covered by pentominoes, white circles indicate spaces that may not be contained in pentominoes and must be part of the loop.

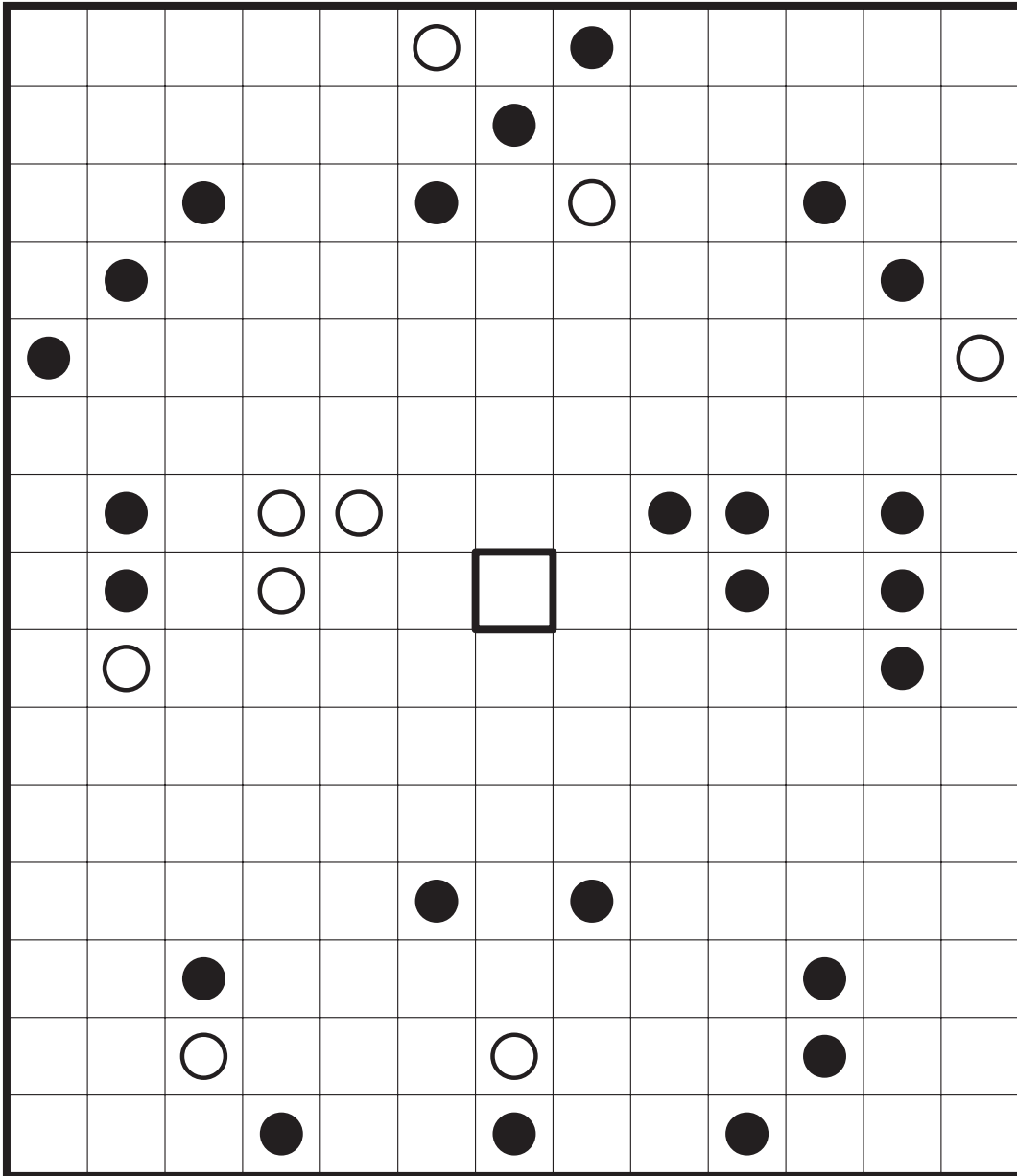
Example



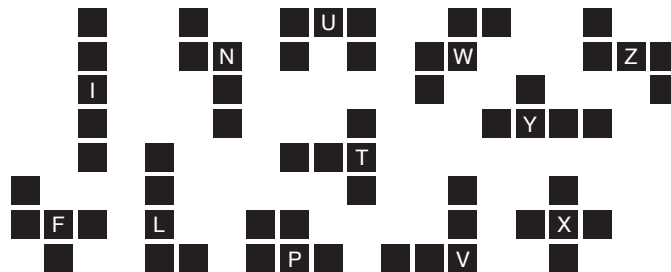
Solution



Statue Park (Loop) by John Bulten



Pent-Up Rage



Statue Park by Murat Can Tonta



					○	●				○	
					●	○		●		●	
●	○										
					●	○					
	○				○	●					
			○	●			●	○		●	○
●	○		●	○			○	●			
					○	●				●	
					●	○					
										●	○
	○		○		●	○					
	●				○	●					

Checkerboards

