

# BEST OF 2021

# REGION DIVISION

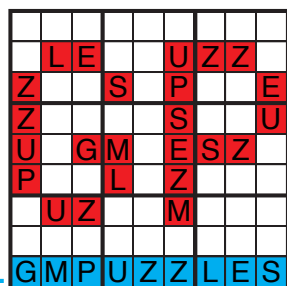


Elyot Grant  
Takeya Saikachi  
Serkan Yürekli  
Swaroop Guggilam  
Jeffrey Bardon

Pentominous\*  
Pentominous (Cipher)  
Fillomino (Checkered)  
Kuromasu  
Araf

\*Best Region Division puzzle

## GRANDMASTER PUZZLES



[www.gmpuzzles.com](http://www.gmpuzzles.com)

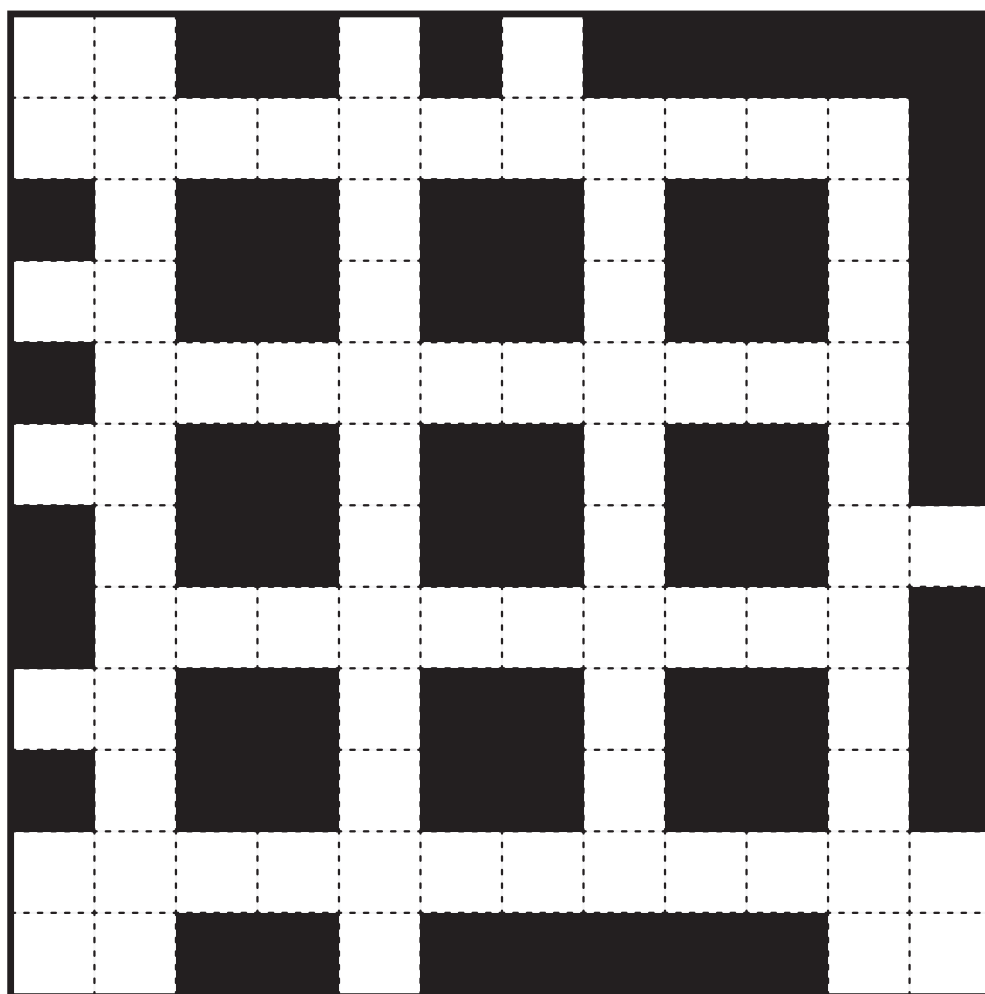


<https://www.gmpuzzles.com/blog/category/regiondivision/>



<https://www.gmpuzzles.com/blog/category/other-posts/bestof/>

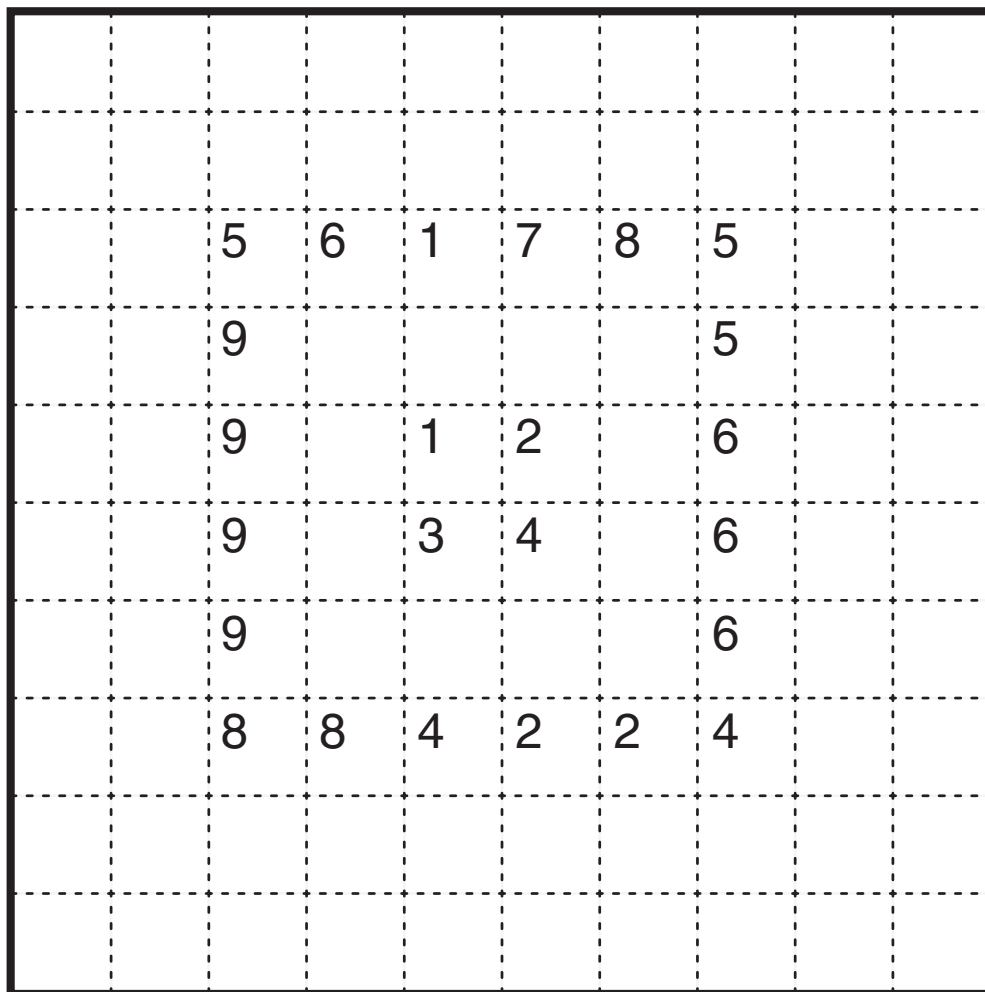
# Pentominous by Elyot Grant



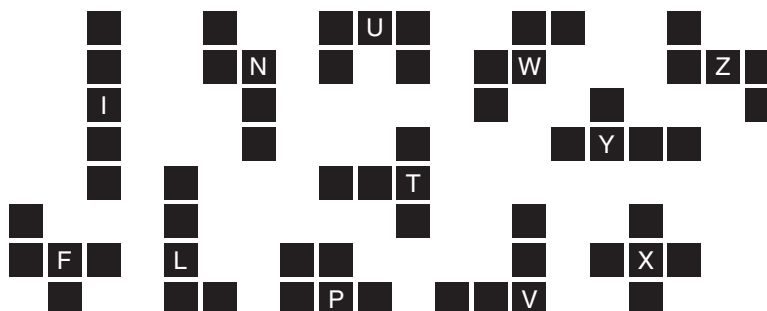
*No Givens*

# Pentominous (Cipher) by Takeya Saikachi

Rules: Divide the grid into 20 pentominoes so that no two pentominoes of the same shape (including rotations/reflections) share an edge. Each number in this grid represents a clue for a different letter/pentomino as in a regular Pentominous puzzle; all instances of a number must represent the same letter. An inventory of possible pentominoes is given below the puzzle.



*Box in Box*



# Fillomino (Checkered) by Serkan Yürekli

Rules: Standard Fillomino rules.  
Also, it must be possible to shade  
some polyominoes black  
so that no bordering  
polyominoes are the same color  
(in other words, the grid must allow  
a two-color shading).

			1	
		3		4
	1		4	
5		4		
	5			

4	4	4	1	4
4	3	3	4	4
5	1	3	4	3
5	5	4	3	3
5	5	4	4	4

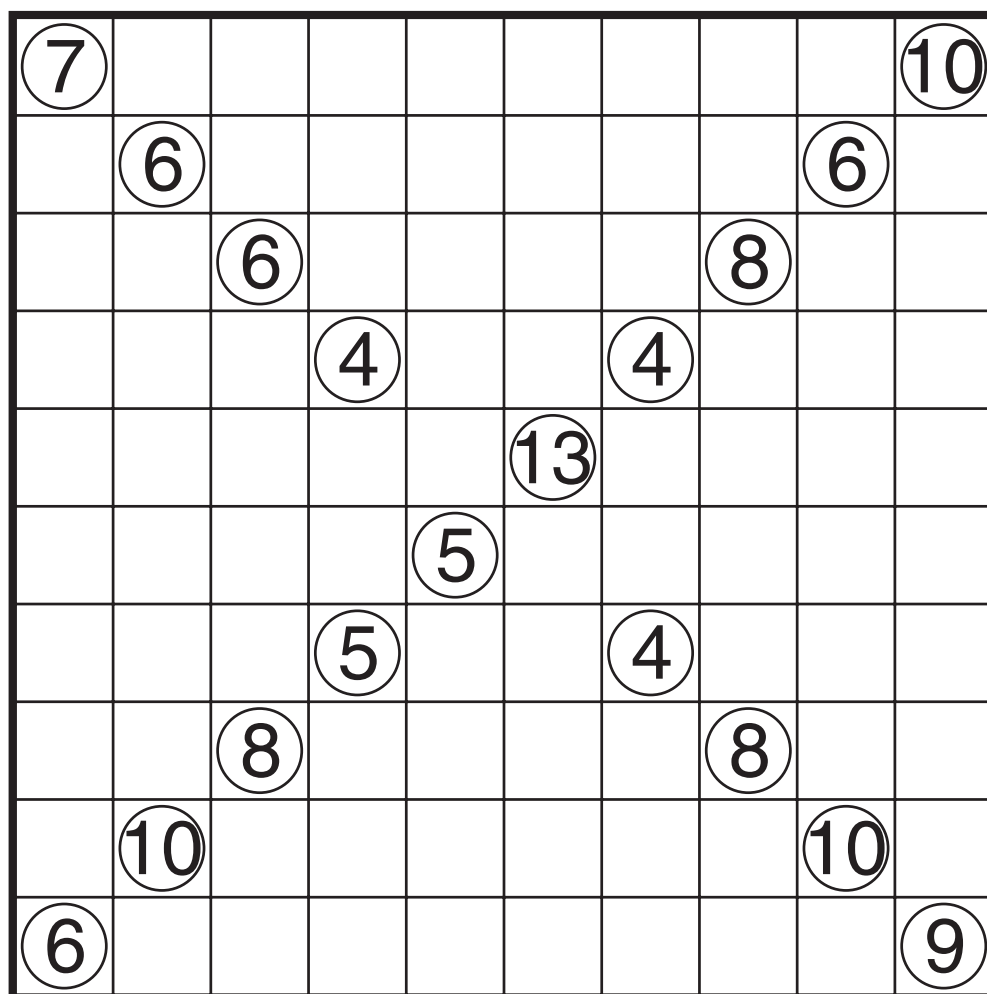
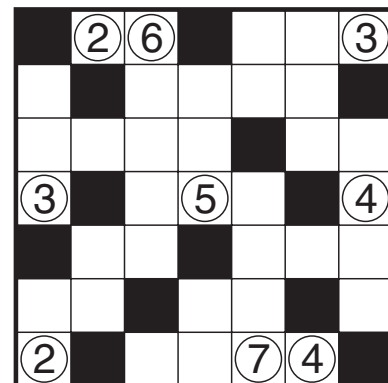
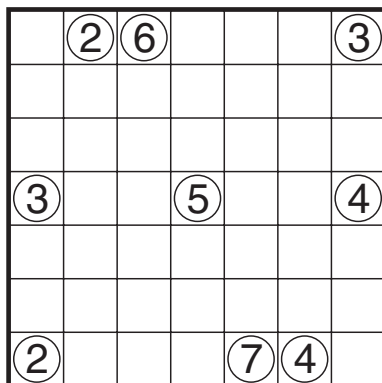


			6						
		5	5			8	4		
	4	5					1	4	
				8	3			3	
	2			5	4				
	4	7					1	4	
		7	1			18	18		
						1			

*Siege*

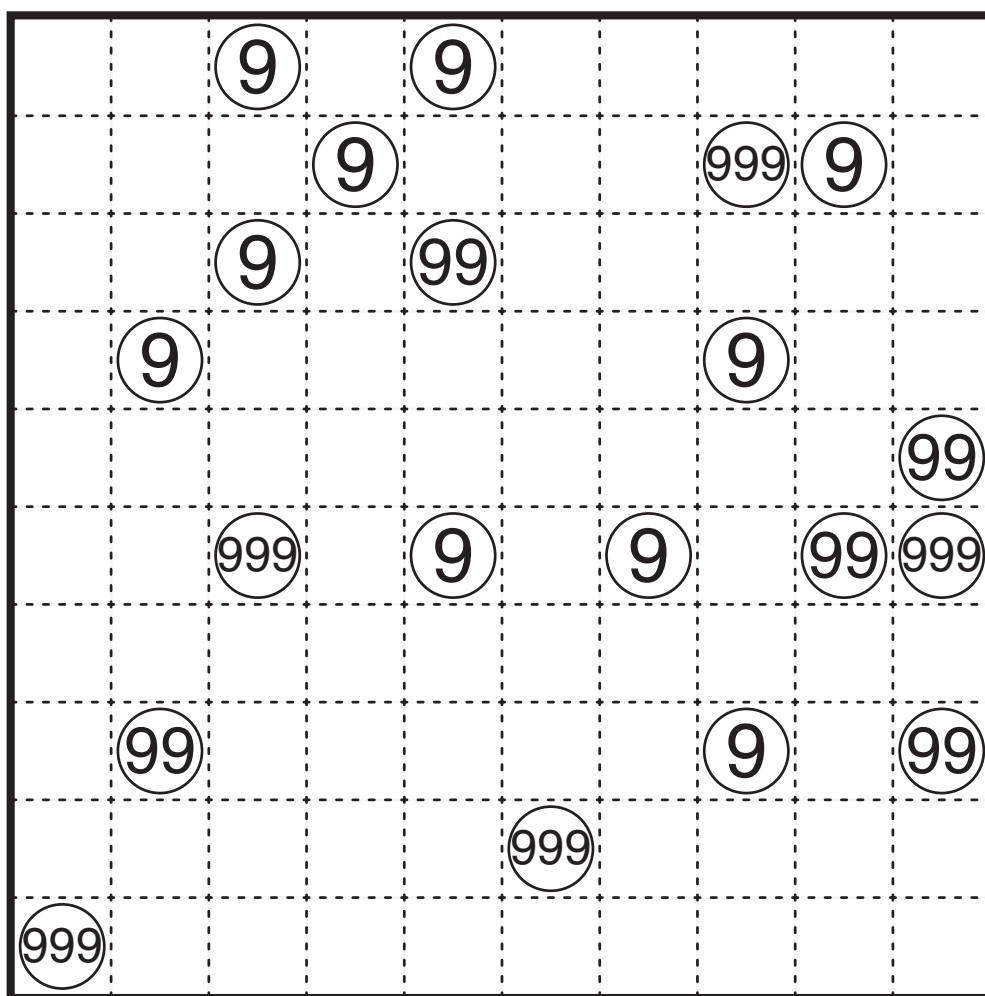
# Kuromasu by Swaroop Guggilam

Rules: Shade some empty cells black so that each number indicates the total count of white cells connected vertically and horizontally to that number including the numbered cell itself. Black cells cannot share an edge, and all white cells must belong to a single connected group.



X

# Araf by Jeffrey Bardon



*Oh Nine*