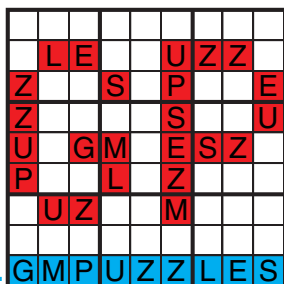




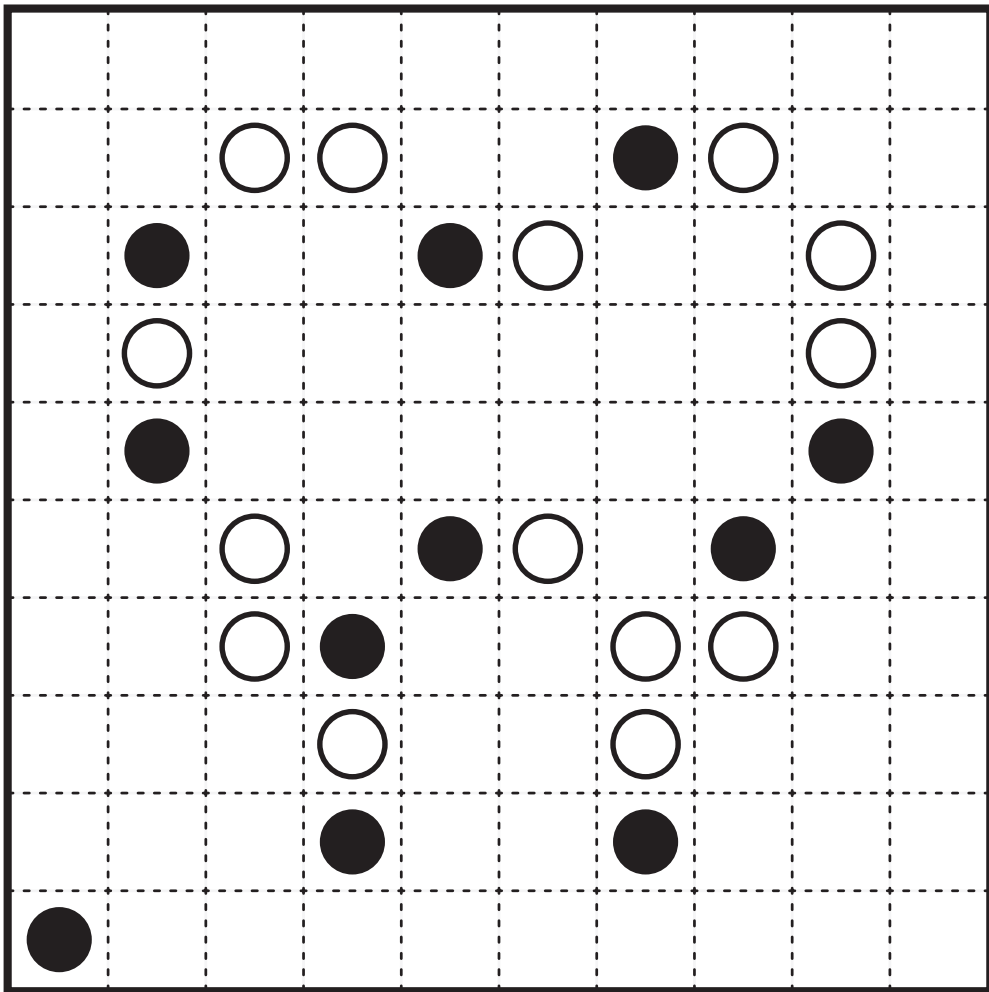
VARIETY

Salih Alan Masyu
Serkan Yürekli Double Kakuro
JinHoo Ahn Pentominous
Jonas Gleim Tapa (Borders)
Bryce Herdt Thermo-Sudoku
Murat Can Tonta Star Battle

GRANDMASTER PUZZLES



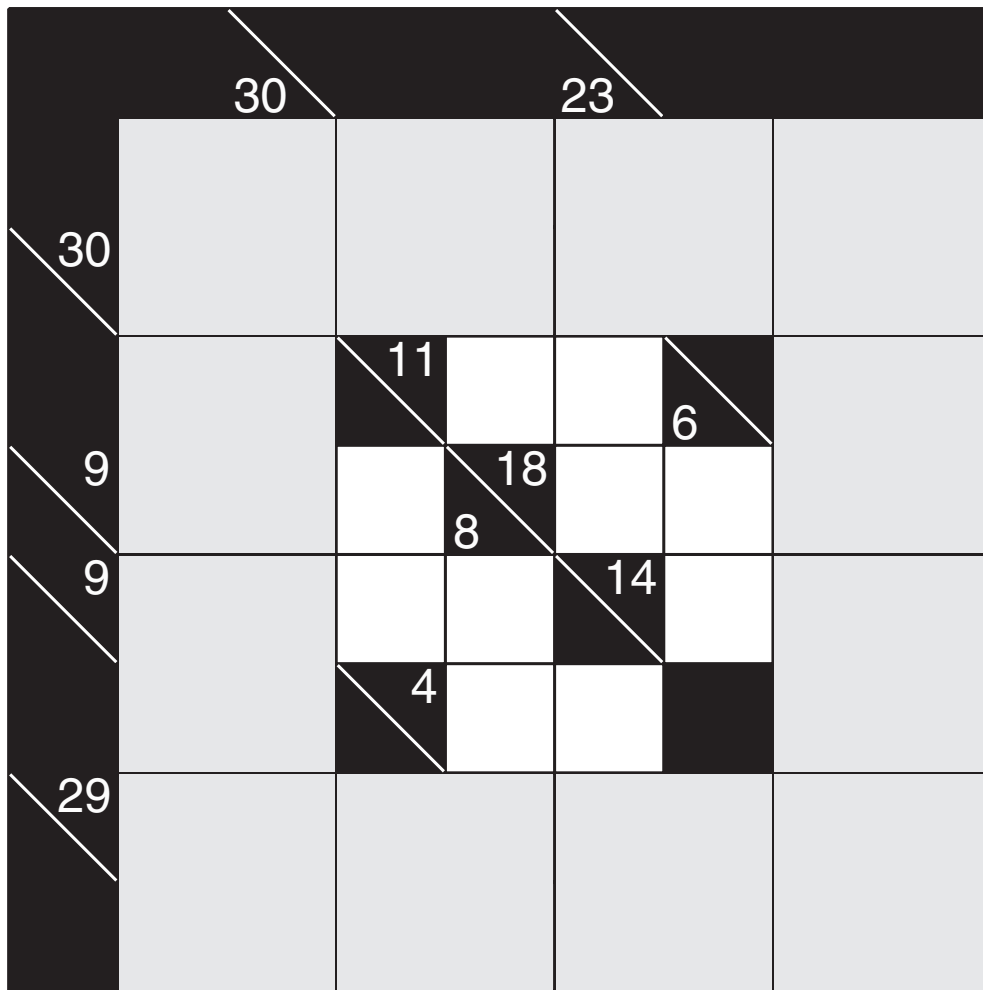
Masyu by Salih Alan



Tooth

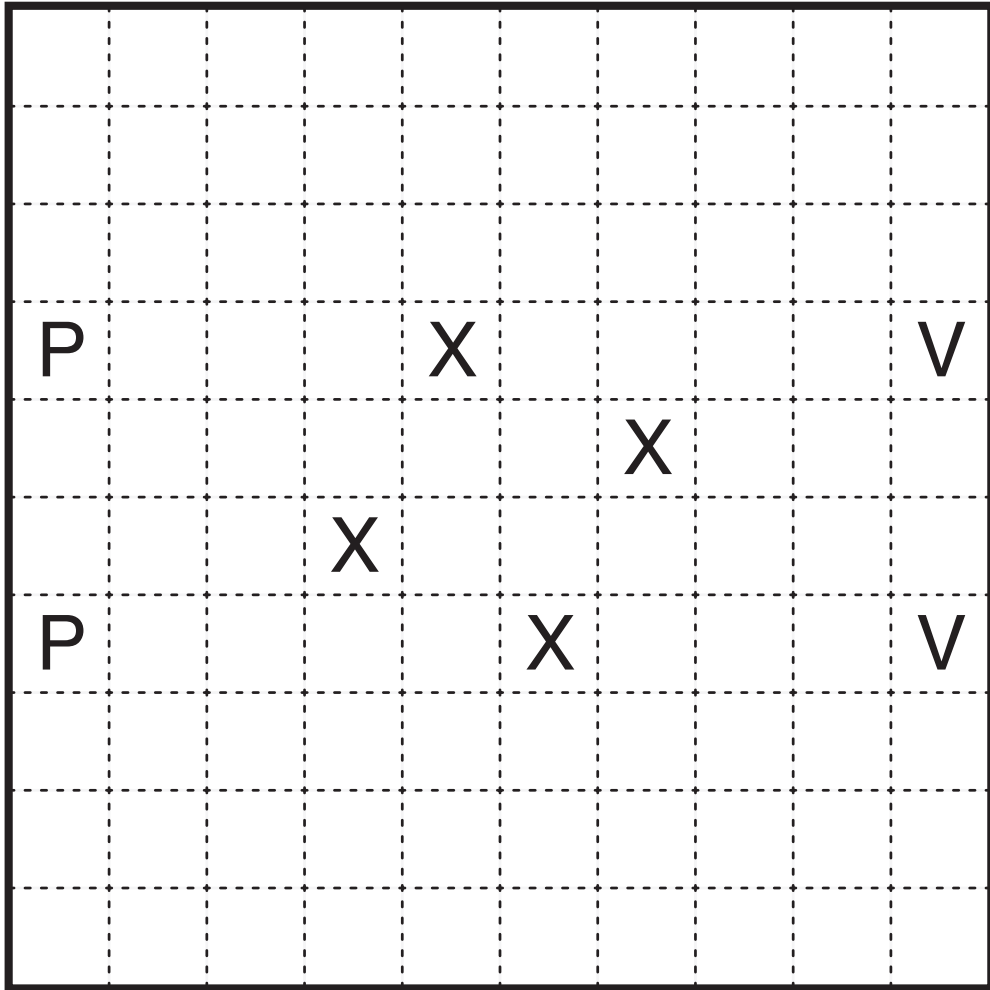
Double Kakuro by Serkan Yürekli

Rules: Variation of Kakuro. The gray (2x2) cells are to be filled by a single digit which sits in multiple rows and columns. No digits can repeat within an entry, regardless of if it is in a small or large cell.

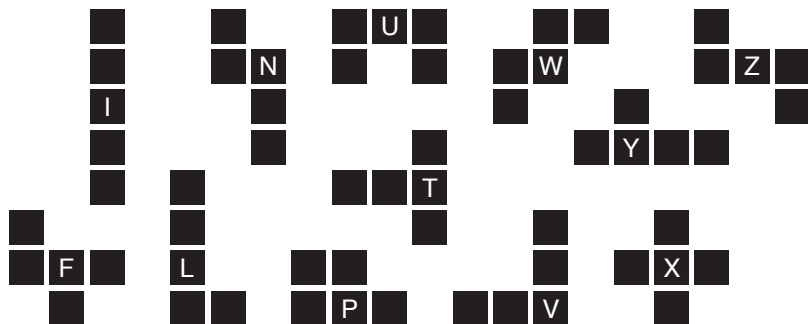


Ring

Pentominous by JinHoo Ahn

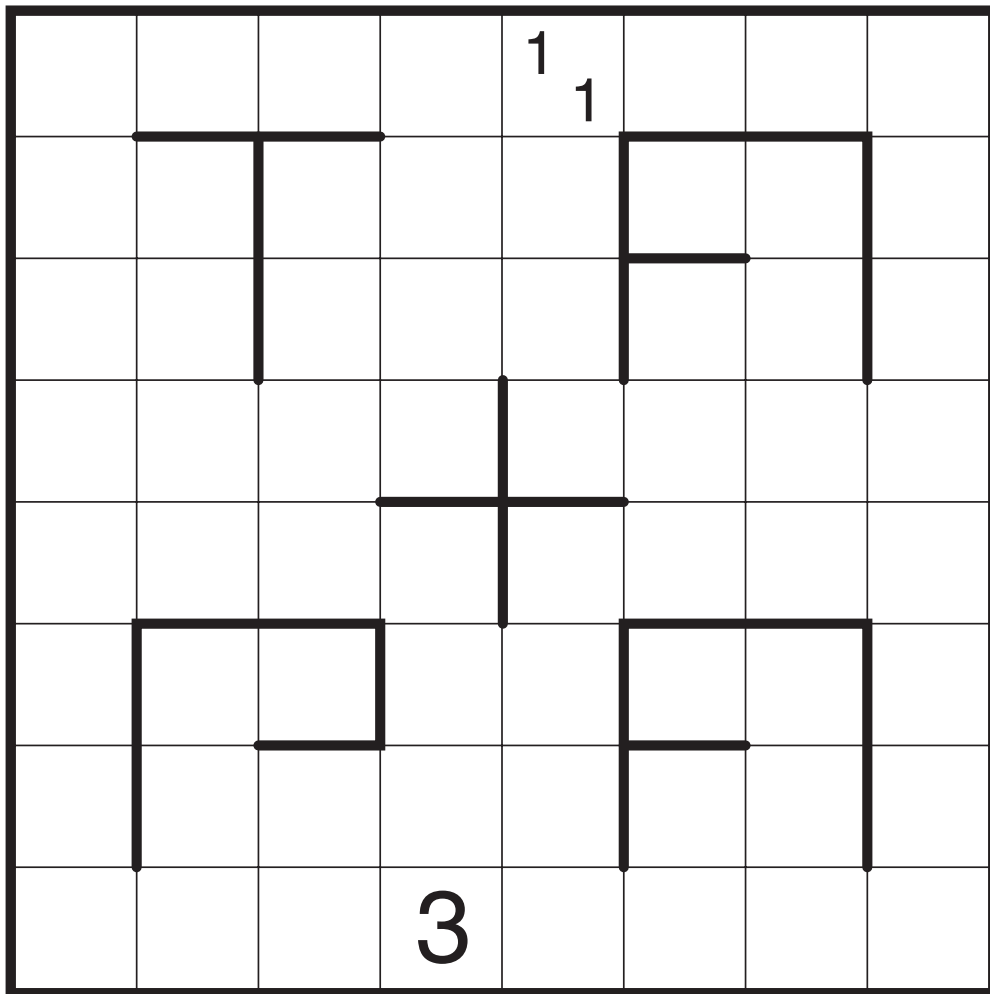


Center X



Tapa (Borders) by Jonas Gleim

Rules: Standard Tapa Rules. Also, if two cells are separated by a thick border, this means that exactly one of those cells is shaded and the other is unshaded.



TAPA

Thermo-Sudoku by Bryce Herdt



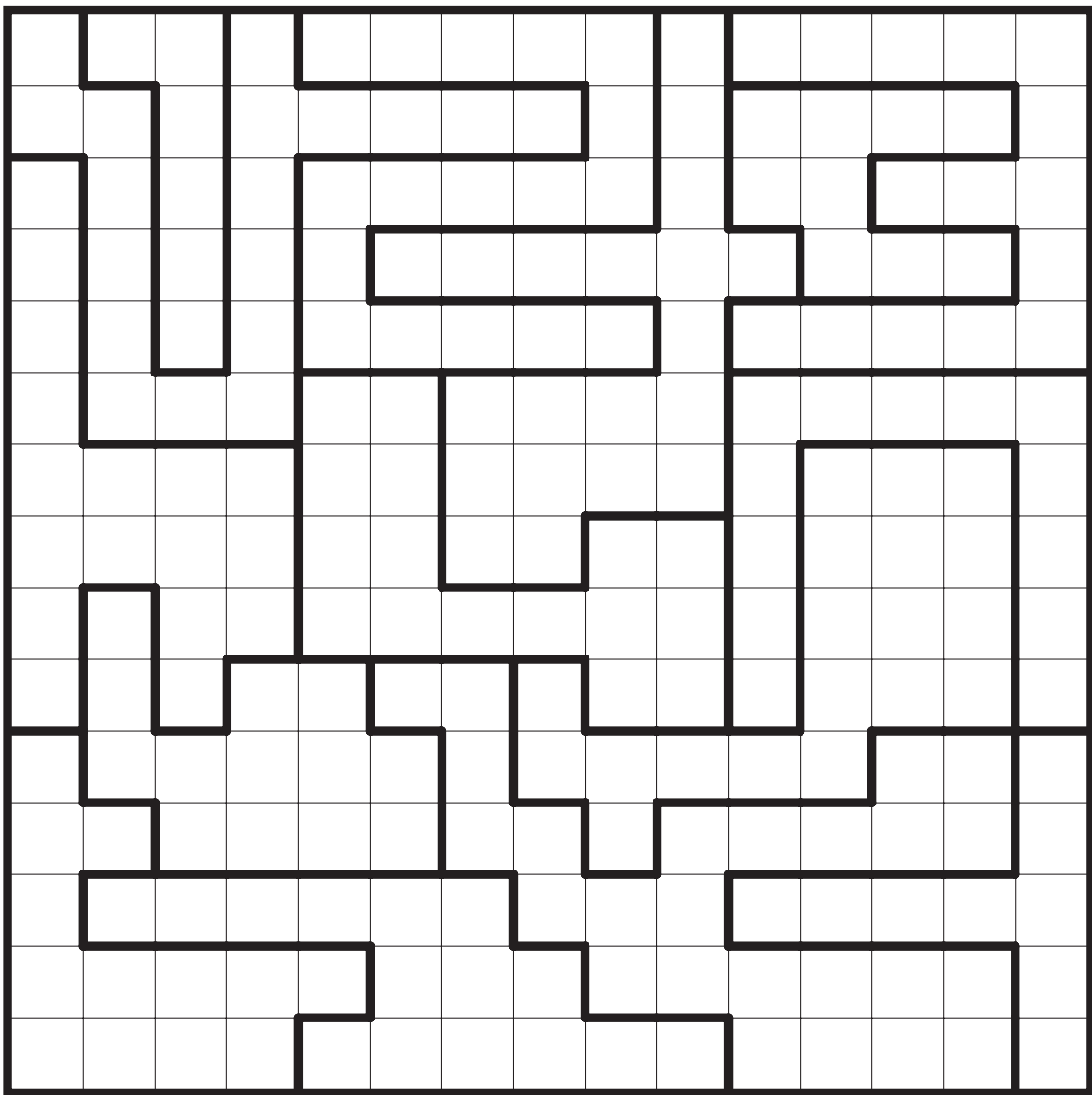
		8					
	6			3			4
					6		

Hot and Cold

Star Battle by Murat Can Tonta



3★



Letters and Numbers