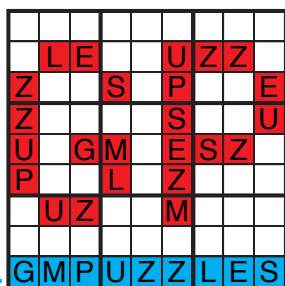


# BEST OF 2020 SUDOKU



Thomas Snyder	Consecutive Pairs Sudoku
Bryce Herdt	Thermo-Sudoku
Thomas Snyder	Consecutive Pairs Sudoku
Swaroop Guggilam	Sudoku
Ashish Kumar	XV Sudoku

## GRANDMASTER PUZZLES



[www.gmpuzzles.com](http://www.gmpuzzles.com)



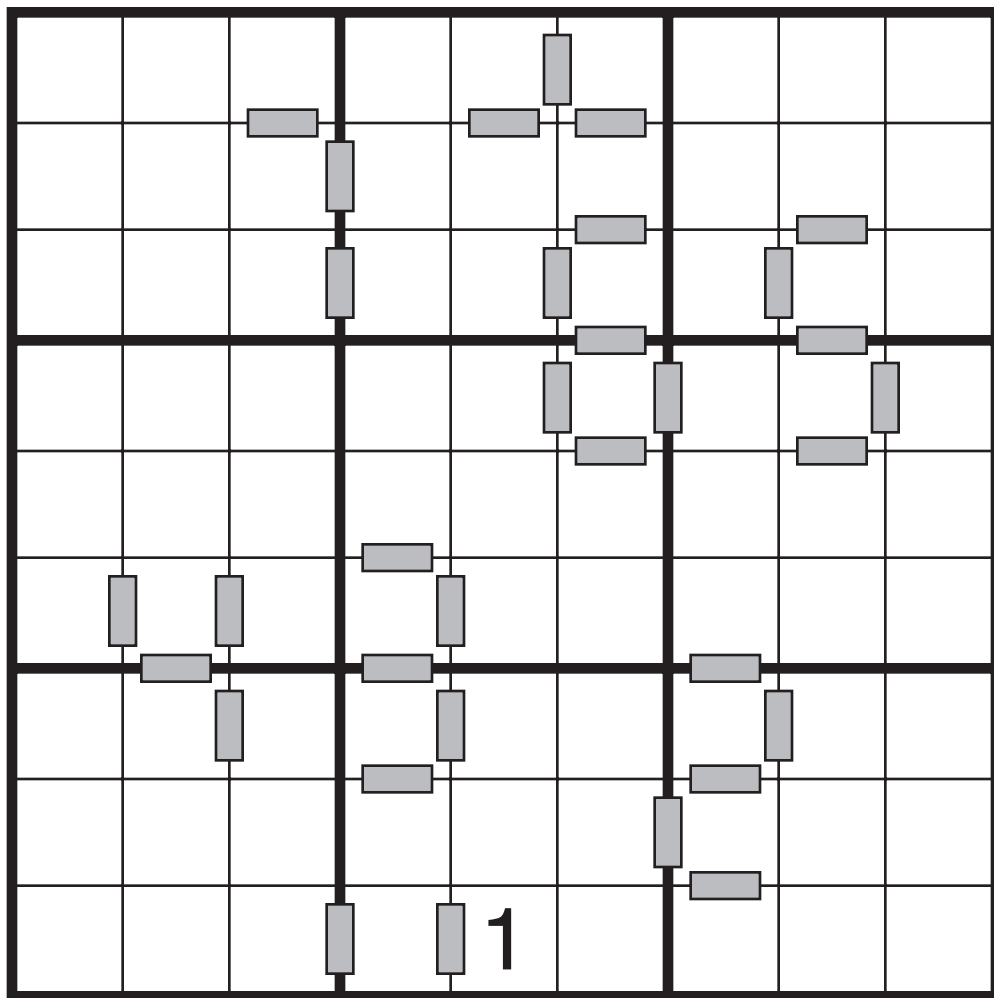
<https://www.gmpuzzles.com/blog/category/sudoku/>



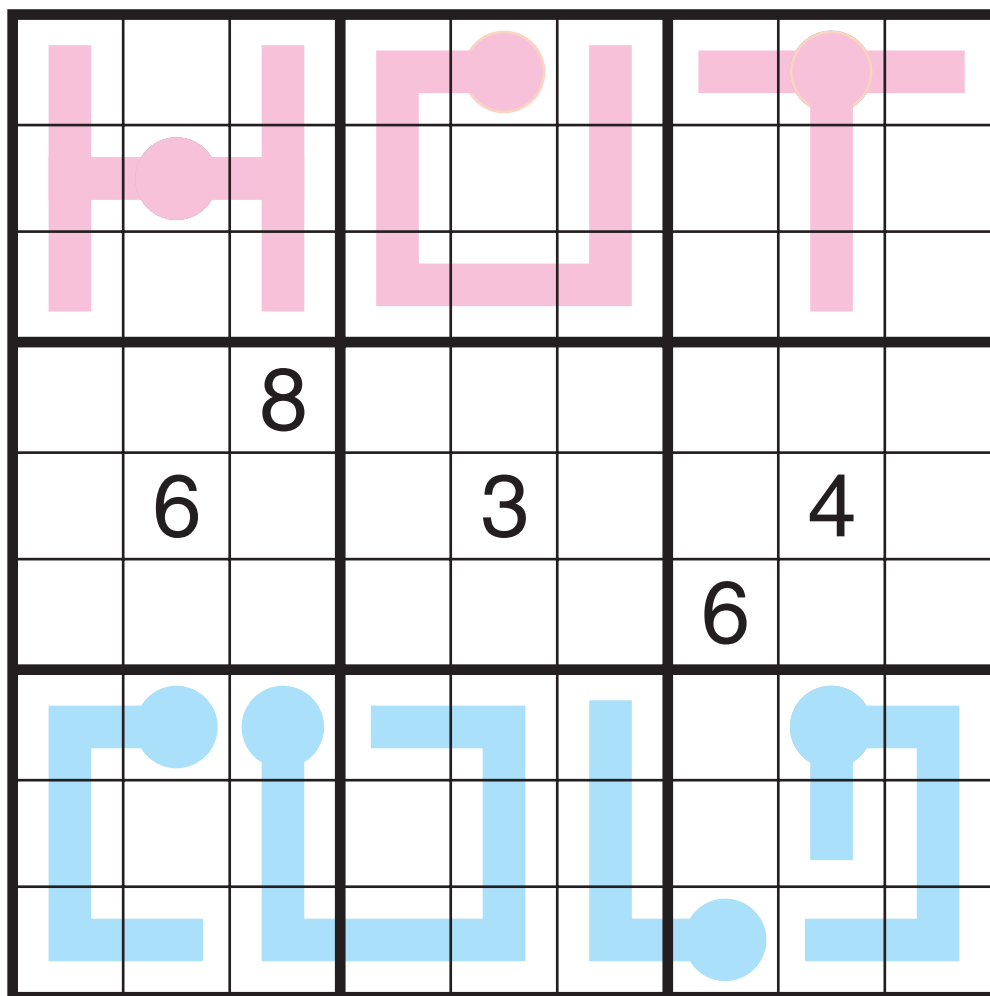
<https://www.gmpuzzles.com/blog/category/other-posts/bestof/>

2020/05/31:  
Consecutive Pairs Sudoku by Thomas Snyder  
Theme: Countdown to 1

Standard Sudoku Rules. Additionally, if a grey bar is given between two adjacent cells, then the two numbers in those cells must be consecutive. (Note: not all possible grey bars are given; adjacent cells without a bar may contain consecutive numbers or nonconsecutive numbers.)



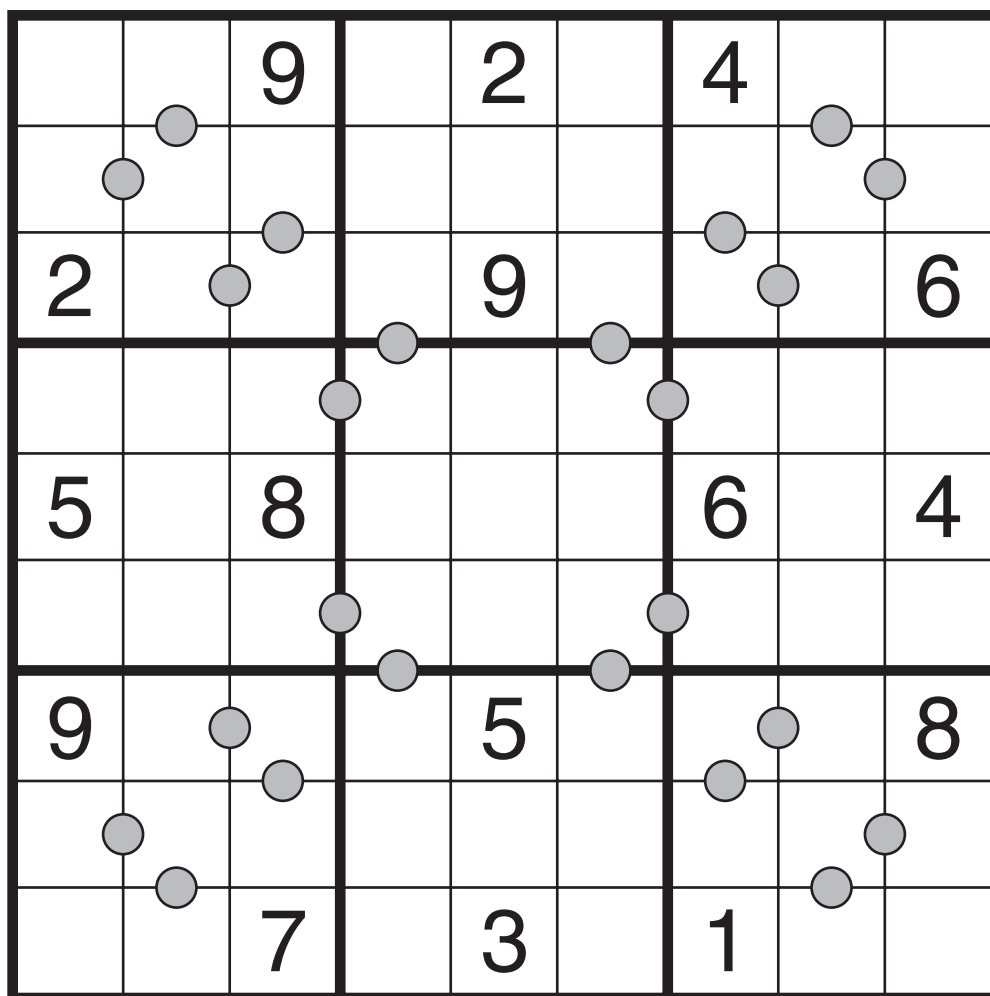
# Thermo-Sudoku by Bryce Herdt



*Hot and Cold*

# Consecutive Pairs Sudoku by Thomas Snyder

Rules: Standard Sudoku rules. Additionally, if a grey circle is given between two adjacent cells, then the two numbers in those cells must be consecutive.  
(Note: not all grey circles are given; adjacent cells without a circle may contain either consecutive numbers or nonconsecutive numbers.)



*Big X*

# Sudoku by Swaroop Guggilam



	6		4		9		7	
		2		3		5		
	4		7		8		5	
		8				9		
	7		1		4		3	
		3		2		1		
	8		9		6		2	

*Borderless*

## XV Sudoku by Ashish Kumar

Rules: Standard Sudoku Rules. Also, whenever the digits in two adjacent cells sum to exactly 10 or 5, an X or V is placed on the edge between cells reflecting the roman numerals for 10 or 5. All adjacent cells not marked with an X or V cannot add up to 10 or 5.



2			5					
	9	6						
	3	8						
3			8					
					9			5
					4			7
					3			9
	x	x	v			5	4	

XV