

2019/02/25:
Even/Odd Sudoku by Gaurav Kumar Jain
Theme: Target

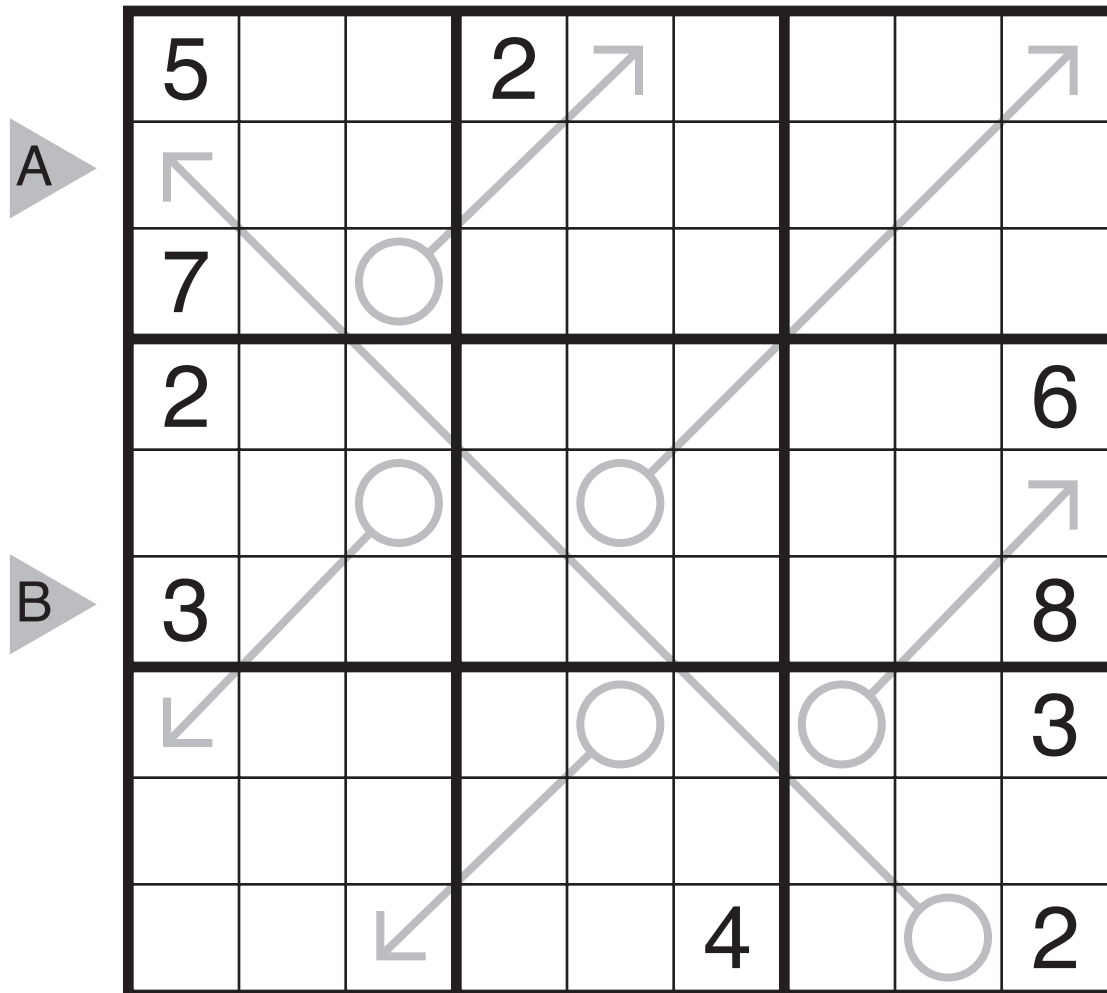
A

				■				
	●	1	2	●	3	4	●	
	5	●				●	8	
	6		●		●		2	
■	●			3			●	■
B		7	●		●		5	
	8	●				●	6	
	●	4	7	●	6	2	●	
				■				

■ = 2, 4, 6, 8

● = 1, 3, 5, 7, 9

2019/02/26:
Arrow Sudoku by Kishore Kumar Sridharan
Theme: Median



2019/02/27:

Jigsaw Wordoku by Bryce Herdt

Theme: Feng Shui

(Clue symmetry, and 7 of the regions have one line of symmetry for the region and for the clues)

Rules: Insert a letter from FENG SHUI into each cell so that no letter repeats in any row, column, or bold region.

A 10x8 grid puzzle. The grid contains letters and bold regions. Clues A and B are on the left side of the grid.

	F		E		N		
I				G			
					G		H
A	E		F				
					F		S
	G		S				
			I				N
B			H		U		I

2019/02/28:
 Killer Sudoku by Serkan Yürekli
 Theme: Rocket Launch

Rules: Place a digit from 1 to 9 into each cell so that no digit repeats in any row, column, or bold outlined region. The sum of the digits in each cage must equal the value given in the upper-left corner of that cage. Digits cannot repeat inside a cage.

			5				7	
A		6				21		
	7				8			
	8	13		23				
			13					
		8						1
	21			16			2	
B	7					3		
					4			

2019/03/01:
 Consecutive Pairs Sudoku by Ashish Kumar
 Theme: Dots Vs. Numbers

Rules: Standard Sudoku rules. Additionally, if a gray circle is given between two adjacent cells, then the two numbers in those cells must be consecutive. (Note: not all gray circles are given; adjacent cells without a circle may contain either consecutive numbers or nonconsecutive numbers.)

					9			8
A	●			●			4	
		●				9		2
	●		●					
		●		●	2		6	
	●		●			7		9
					4		3	
	●		●					
						8		4
	●		●		7			
B				●				

2019/03/02:
 Birthday Surprise Sudoku by Prasanna Seshadri
 Theme: 28 from 03/02/1991-2019

Rules: Standard Sudoku rules. The numbers outside the grid indicate the sum of all digits between the 8 and the 9 in that row or column. Also, as in Consecutive Pairs Sudoku, if a gray circle is given between two adjacent cells, then the two numbers in those cells must be consecutive. (Note: not all gray circles are given; adjacent cells without a circle may contain either consecutive numbers or nonconsecutive numbers.)

	1	9	9	1		2	0	1	9
A							●		
	0								●
	2				●				
		●							
	28			2				●	
						8			
									●
B							●		
	0								
	3			●					

2019/03/02:

Tight Fit Sudoku (Unique Pairs) by Chris Green

Theme: Sweeping Diagonals

Rules: Standard Tight Fit Sudoku Rules. Also, looking across all of the Tight Fit cells in both grids, each Tight Fit cell must have a unique pair of digits.

A

4/	/	/	8		
1			/7	/	/
/	2/	/		5	
	3		/	/2	/
/	/	5/			4
		7	/	/	/9

C

2/	/	/	5		
7			/8	/	/
/	8/	/		1	
	1		/	/7	/
/	/	5/			2
		3	/	/	/9

D