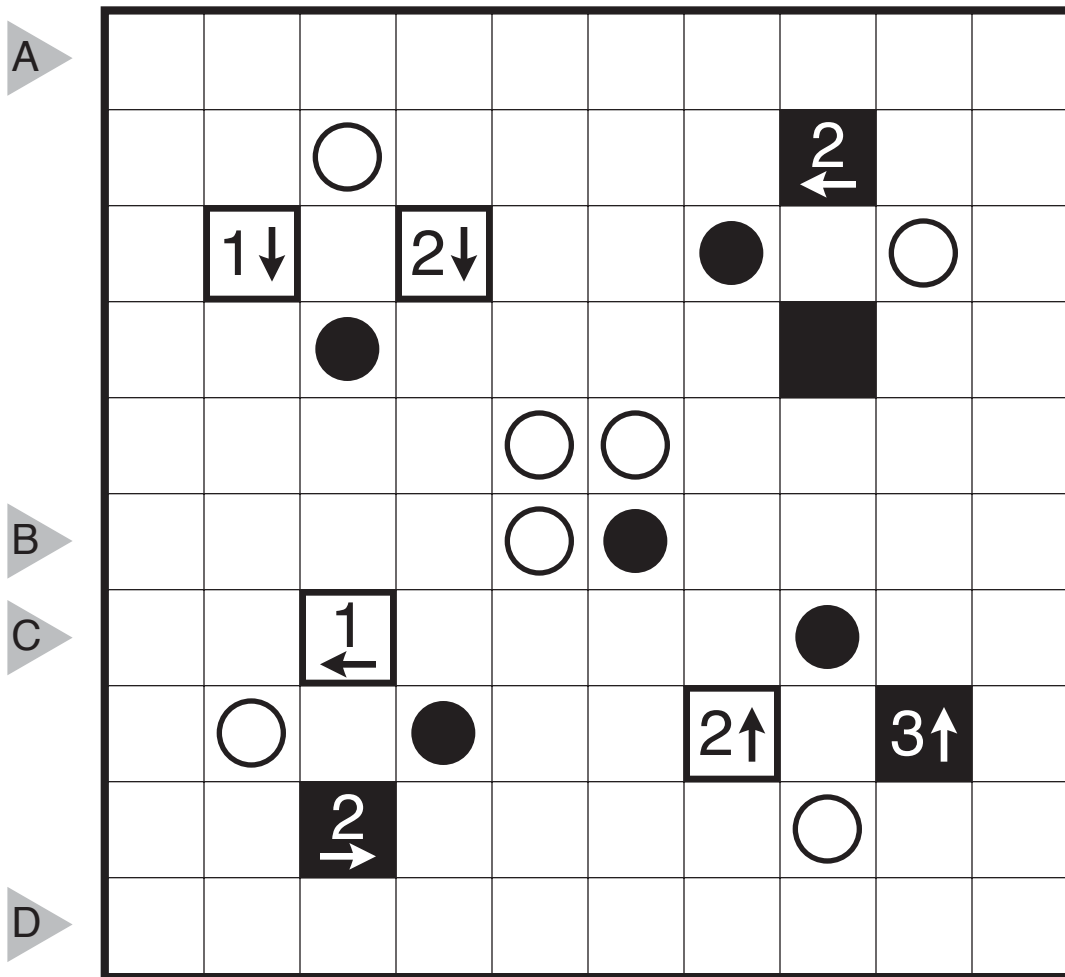


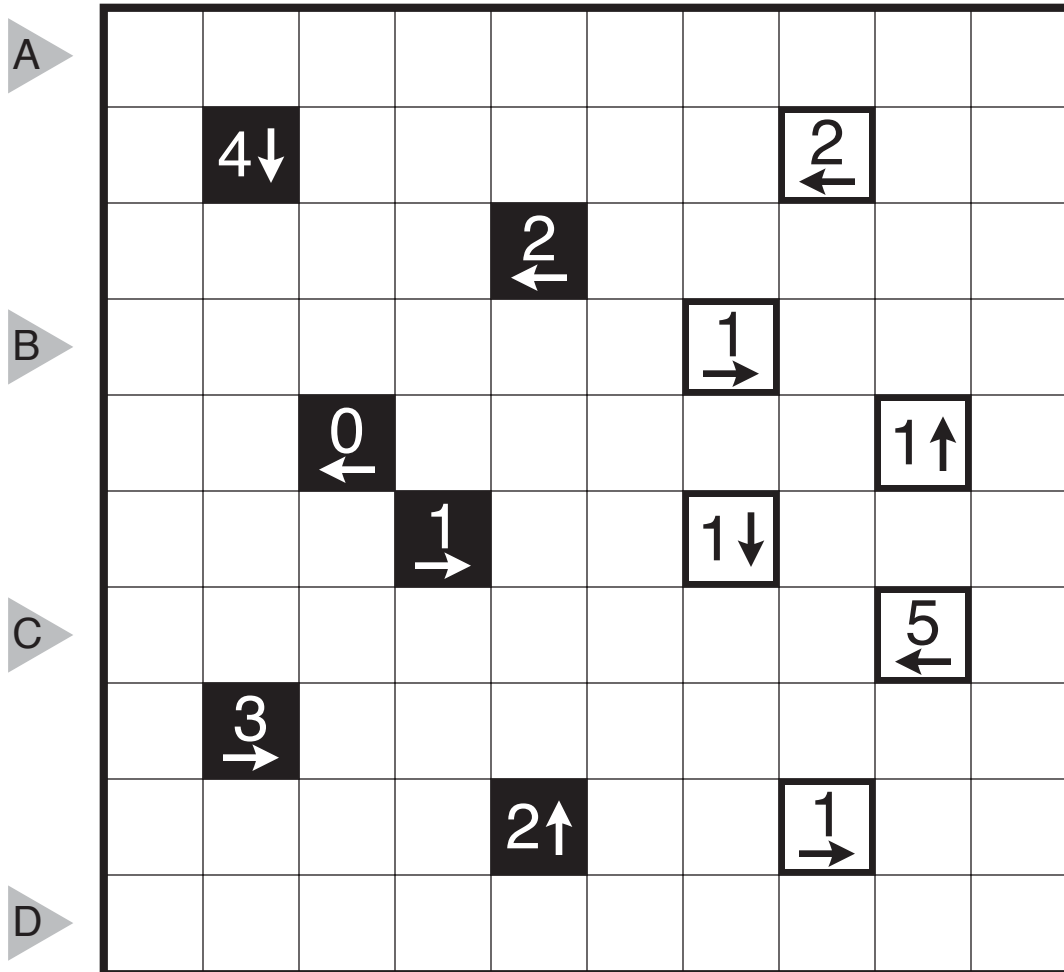


2019/06/18:  
 Castle Wall (Masyu) by Ashish Kumar  
 Theme: Clue Symmetry and Logic

Rules: Classic Castle Wall rules. Also, the loop must go straight through the cells with white circles, with a turn in at least one of the cells immediately before/after each white circle. The loop must make a turn in all the black circles, but must go straight in both cells immediately before/after each black circle.



2019/06/19:  
Castle Wall by Serkan Yürekli  
Theme: XO



2019/06/20:  
 Castle Wall (Total False) by Serkan Yürekli  
 Theme: Clue Symmetry and Logic

Rules: Variation of Castle Wall. Clue cell colors have the usual meaning. However, the numbers cannot be correct clues for any of the four directions (left, right, up, down) around the cell.

	3								
▶	A				2				
		1						3	
				3		2			
▶	B							1	
▶	C		3						
					0				
		0						0	
▶	D				2				
									4



2019/06/22:  
 Castle Wall by Murat Can Tonta  
 Theme: Clue Symmetry and Logic

