

2018/10/08:
Sudoku by Rajesh Kumar
Theme: Arrows

B

9					2			6
	8				7		5	
		7			8	1		
			6			7	1	2
				5				
1	2	3			4			
		4	8			3		
	3		7				2	
5			4					1

A

2018/10/09:
Tight Fit Sudoku by Thomas Snyder
Theme: Almost 1 to 9 twice

	1		2/	/	3/
/	4/	/	5		6
	7		/8	/	/9
A	1/	/	4/		3
B	4		5	/	6/
	/7	/	/8		9

2018/10/10:
Even/Odd Sudoku by Thomas Snyder
Theme: Half and Half

A

	■				●
■		3		●	
	2		●		1
1		■		4	
	■		1		●
■				●	

B

■ = 2, 4, 6

● = 1, 3, 5

2018/10/11:
 Arrow Sudoku by Serkan Yürekli
 Theme: Refraction of Light

The image shows an 8x8 Arrow Sudoku puzzle grid. The grid is divided into four 4x4 quadrants by a vertical line between columns 4 and 5 and a horizontal line between rows 4 and 5. The puzzle contains numbers and arrows. The numbers are: (1,2)=5, (1,4)=8, (2,1)=3, (2,2)=5, (2,8)=6, (3,1)=3, (3,5)=2, (3,7)=7, (3,8)=5, (4,1)=6, (4,2)=8, (4,5)=5, (5,2)=2, (5,8)=4, (6,1)=6, (6,2)=2, (7,5)=6, (7,7)=2. The arrows are: (1,4) points up-right, (1,5) points up-left, (2,1) points down-left, (2,3) points down-right, (2,7) points down-left, (2,8) points down-right, (3,1) points down-right, (3,3) points down-left, (3,4) points down-right, (3,6) points down-left, (4,1) points down-left, (4,3) points down-right, (4,4) points down-left, (4,5) points down-right, (4,6) points down-left, (4,7) points down-right, (4,8) points up-right, (5,1) points down-right, (5,3) points down-left, (5,4) points down-right, (5,6) points down-left, (5,7) points down-right, (5,8) points up-right, (6,1) points down-left, (6,3) points down-right, (6,4) points down-left, (6,5) points down-right, (6,6) points down-left, (6,7) points down-right, (6,8) points up-right, (7,1) points down-right, (7,3) points down-left, (7,4) points down-right, (7,5) points down-left, (7,6) points down-right, (7,7) points down-left, (7,8) points down-right, (8,1) points down-right, (8,3) points down-left, (8,4) points down-right, (8,5) points down-left, (8,6) points down-right, (8,7) points down-left, (8,8) points down-right.

	○		↗	8	↖			
	5		↘				↘	○
3			↘				6	
↙			↘		2		○	7 5
A			↘			↘		
6	8	○		5		↘		↗
	2					↘		4
○		↘				↘	2	↘
B		↘	↘	6	↙		○	

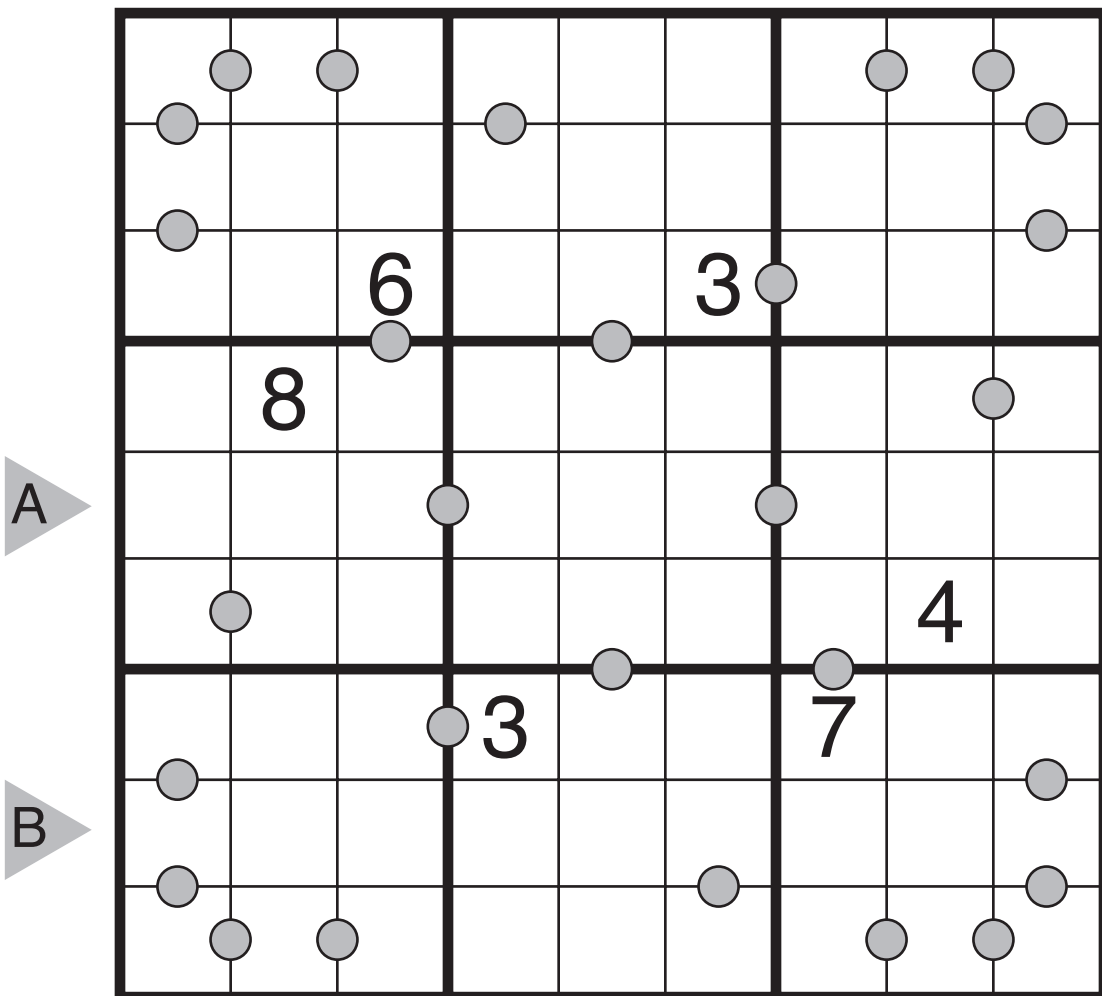
2018/10/12:

Consecutive Pairs Sudoku by Murat Can Tonta

Theme: Clue Symmetry and Logic

Rules: Standard Sudoku rules. Additionally, if a gray circle is given between two adjacent cells, then the two numbers in those cells must be consecutive.

(Note: not all gray circles are given; adjacent cells without a circle may contain either consecutive numbers or nonconsecutive numbers.)



2018/10/13:
Thermo-Sudoku by Ashish Kumar
Theme: Clueless

