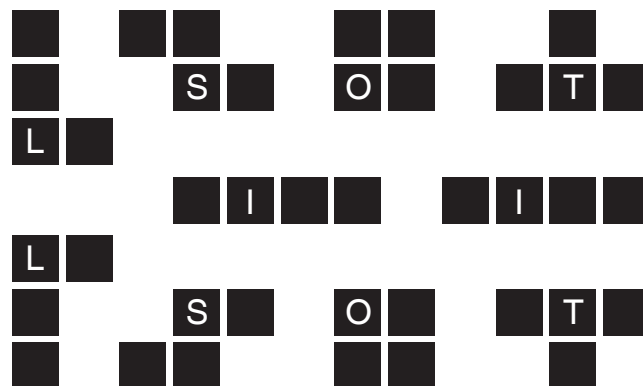
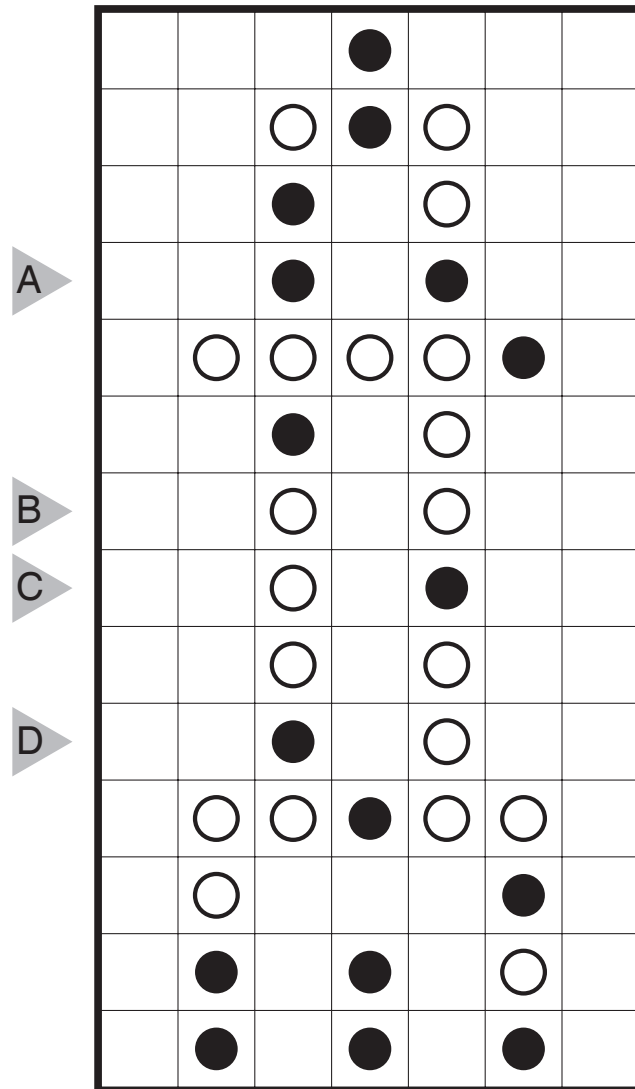


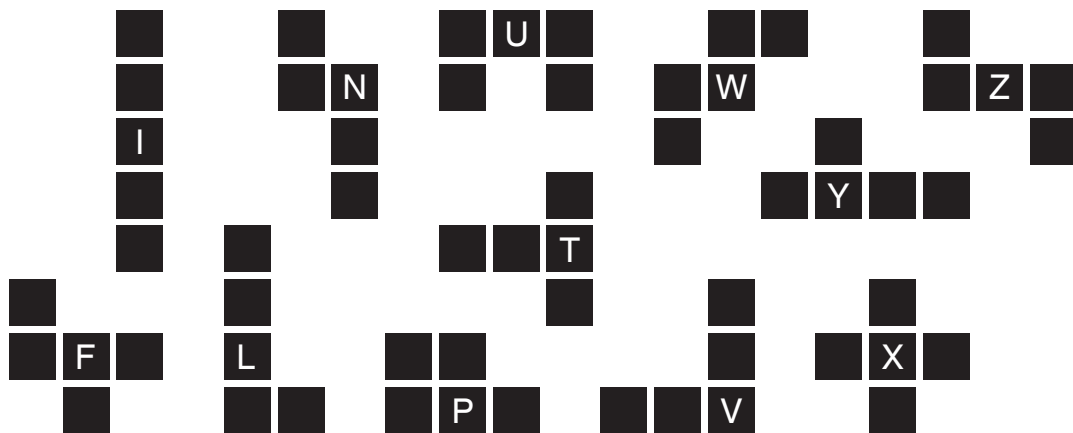
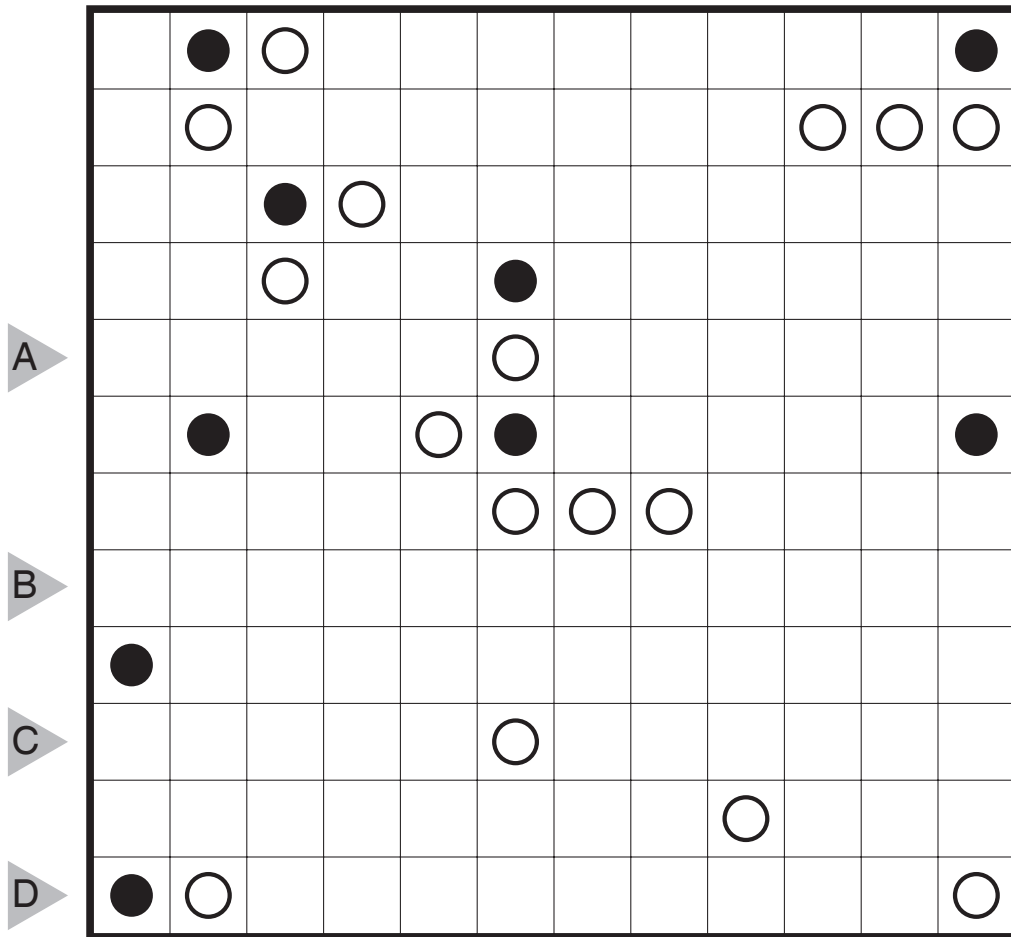
2018/07/16:  
 Statue Park by Thomas Snyder  
 Theme: Lighthouse







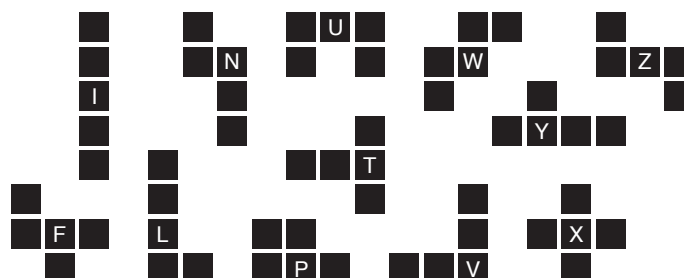
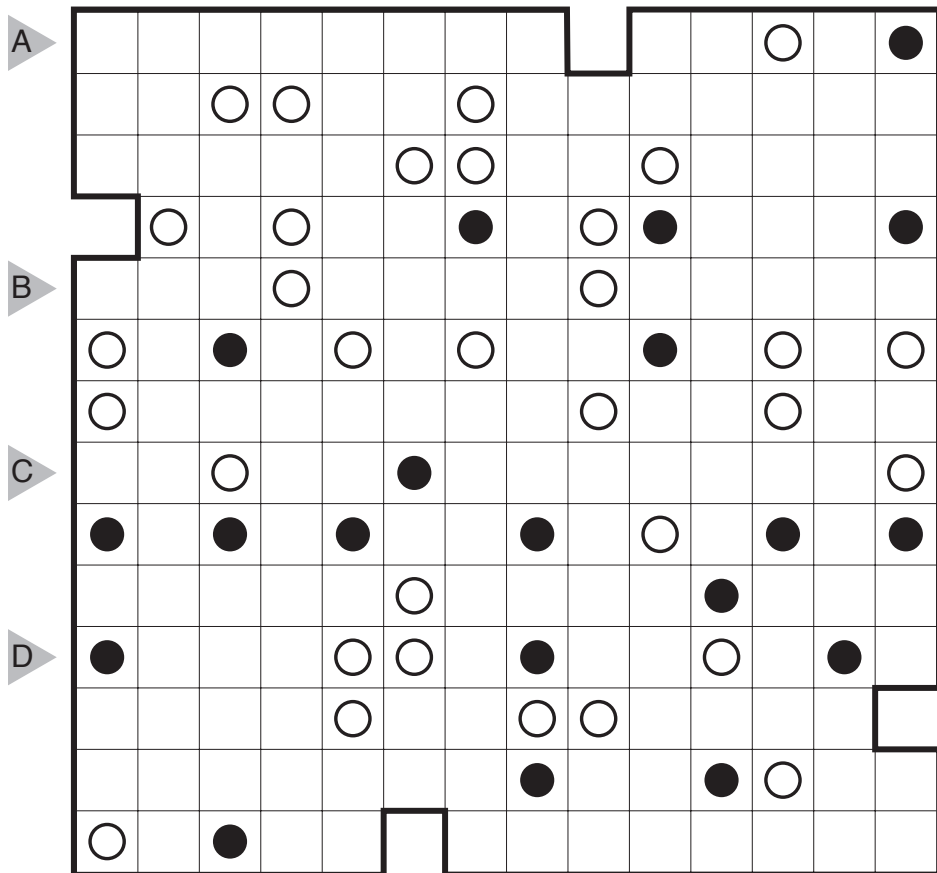
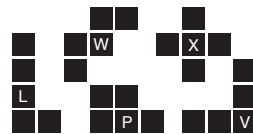
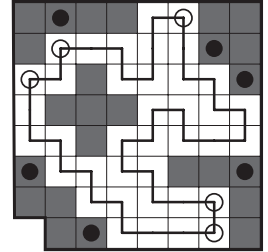
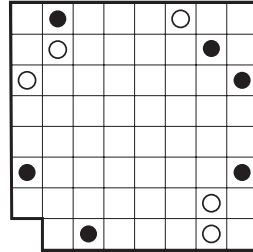
2018/07/19:  
 Statue Park by Grant Fikes  
 Theme: Logical



# 2018/07/20: Statue Park (Loop) by Serkan Yürekli Theme: Utopic

**Rules:** Place each of the twelve pentominoes into the grid once, with rotations and reflections allowed. No two pentominoes can overlap or be orthogonally adjacent, and all cells not occupied by the pentominoes must be traversed by a single, closed loop (connecting cells horizontally or vertically). The black circles indicate some cells that must be covered by pentominoes, white circles indicate spaces that may not be contained in pentominoes and must be part of the loop.

**Answer String:** Enter the length in cells of the horizontal loop segments from left to right in the marked rows, starting at the top. If the loop only has vertical segments in the marked row, enter 0. Separate each row's entry with a comma.



2018/07/21:  
 Statue Park by Joseph Howard  
 Theme: Clue Symmetry and Logic

