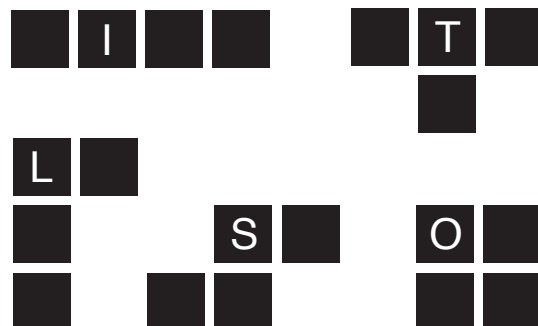
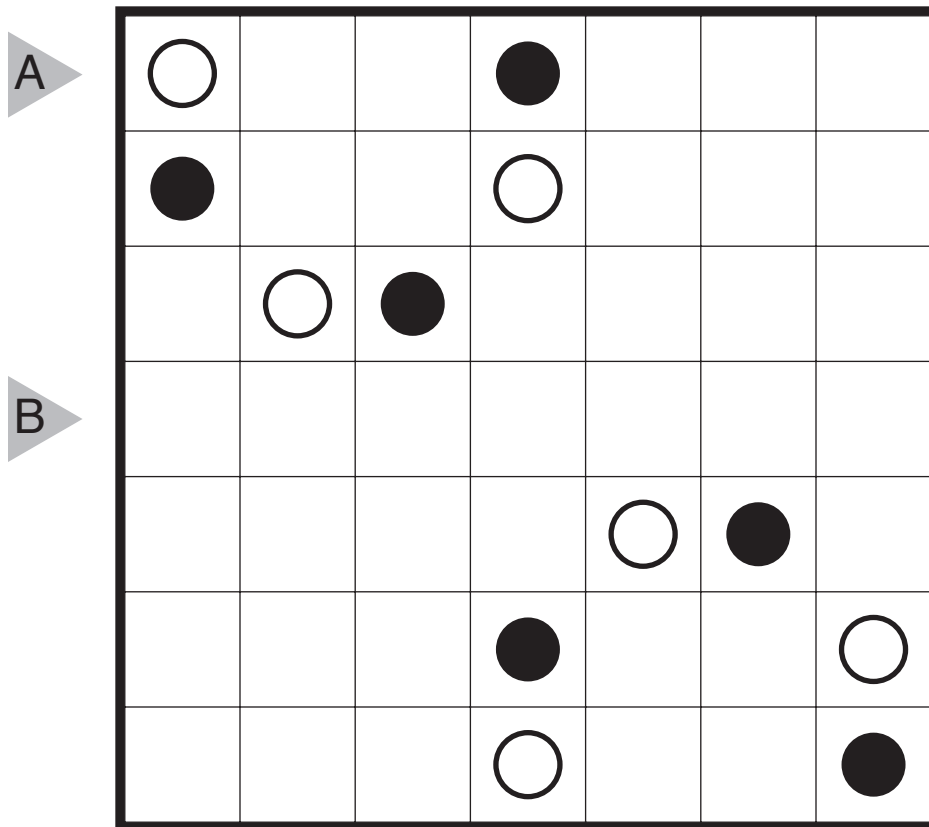
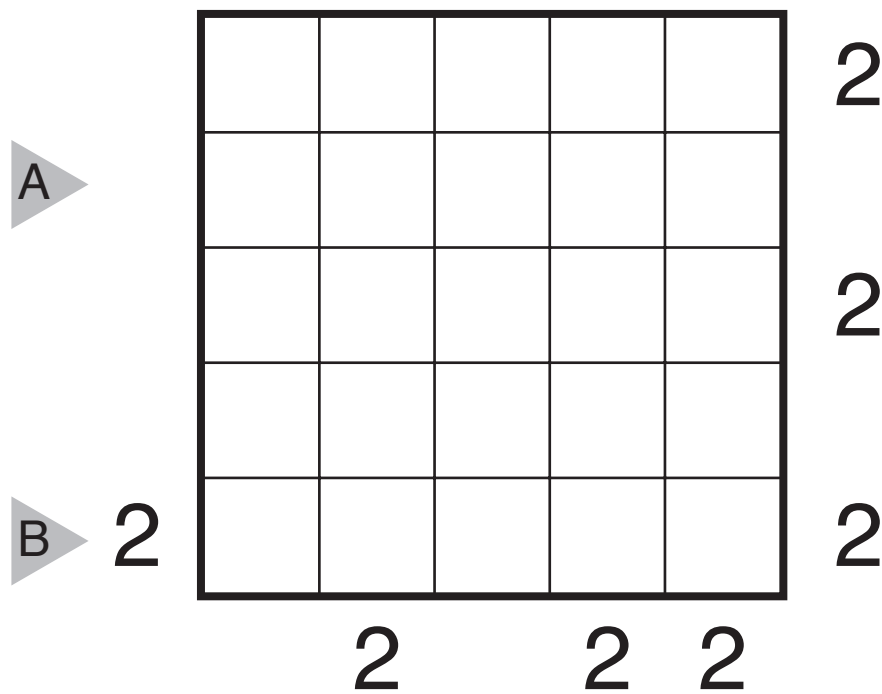


2018/04/09:
 Statue Park by Murat Can Tonta
 Theme: Antisymmetry



2018/04/10:
Skyscrapers by Serkan Yürekli
Theme: A Land of 2



2018/04/11:
 Fillomino by Grant Fikes
 Theme: Clue Symmetry and Logic

		6	3			3	4	5		
		1	6					6		
								3		
		2	3	4		1			2	
A										3
						5		1		
		3		4	1		5			
		1		2		5			1	
B		2			2		2		2	
				4		5	3		1	
			5		1					
	4									
		6			2		3	4	5	
C			1							
			3					4	1	
			4	6	1			1	5	

2018/04/13: Minesweeper (Pentomino) by Murat Can Tonta Theme: Clue Symmetry and Logic

Rules: Place the twelve pentominoes into the grid, rotations and reflections allowed. Pentominoes cannot cover the numbered cells, and different pentomino shapes cannot be placed in adjacent cells that share an edge or corner. Numbered cells indicate how many of the surrounding cells (including diagonally adjacent cells) contain parts of the pentominoes.

A			1									
							3					
B	1											
					5			3				
C			5									3
			4						3			
	3								6			
					5			5				
												4
					5							
D									4			

