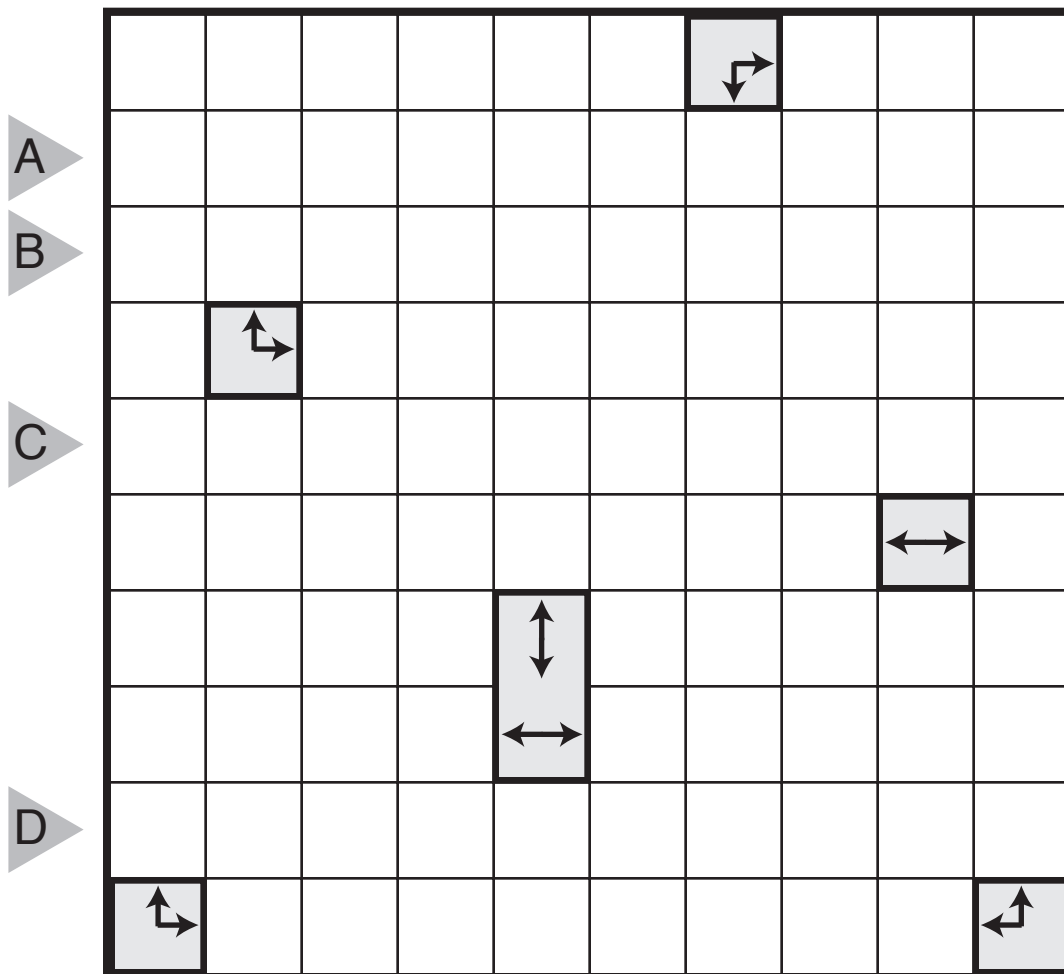


16/09/26:

# Yajilin (Myopia) by Grant Fikes

## Theme: Double Trouble

Rules: Variation of Yajilin. The arrow clues point toward the nearest black square(s) from that clue cell in the four cardinal directions. (For clarity, there is always at least 1 black cell in any direction pointed at by an arrow.)

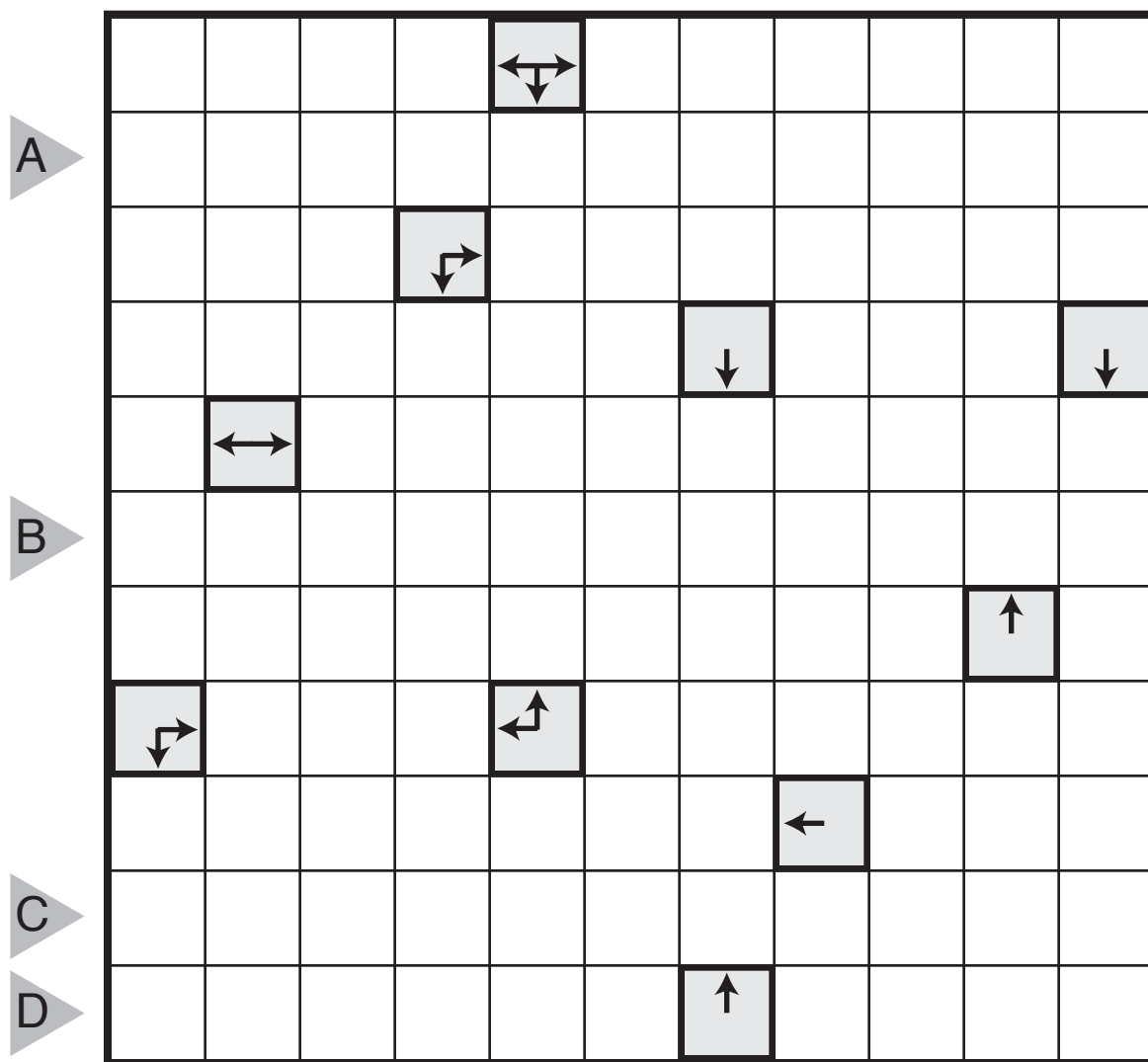


16/09/27:

# Yajilin (Myopia) by Grant Fikes

## Theme: One vs. Many

Rules: Variation of Yajilin. The arrow clues point toward the nearest black square(s) from that clue cell in the four cardinal directions. (For clarity, there is always at least 1 black cell in any direction pointed at by an arrow.)



16/09/28:

# Slitherlink (Cipher) by Grant Fikes

## Theme: Letters In This Slitherlink

Standard Slitherlink Rules. Also, the letters I, L, S, and T stand for different digits from 0 - 3.

A 10x10 grid of dots with letters placed in some cells. The letters are: I, L, S, and T. On the left side, there are four grey arrow-shaped markers labeled A, B, C, and D pointing to the right.



16/09/30:

# Pentominous (Star Battle) by Grant Fikes

## Theme: Logical

Combination of Pentominous and Star Battle. Place stars into some cells so that there are two stars in each row and column; no two stars can touch, even diagonally. Then divide the rest of the grid into 16 regions each containing 5 cells. Regions with the same shape (including rotations/reflections) cannot share an edge. A cell with a letter in it must be part of the pentomino shape normally associated with that letter; an inventory of pentominoes is given below the puzzle.

2★

A 10x10 grid puzzle. The grid is divided into 16 regions by dashed lines. The letters Z, Z, U, U, and X are placed in specific cells. The letter 'Z' is in the top-left cell (row 1, column 1) and the second cell from the left in the second row (row 2, column 3). The letter 'U' is in the fifth cell from the left in the fifth row (row 5, column 6) and the sixth cell from the left in the sixth row (row 6, column 6). The letter 'X' is in the first cell from the left in the tenth row (row 10, column 1). On the left side of the grid, there are two markers: 'A' in a grey triangle pointing right at the third row, and 'B' in a grey triangle pointing right at the seventh row. In the top right corner of the grid, there is a '2★' symbol.

