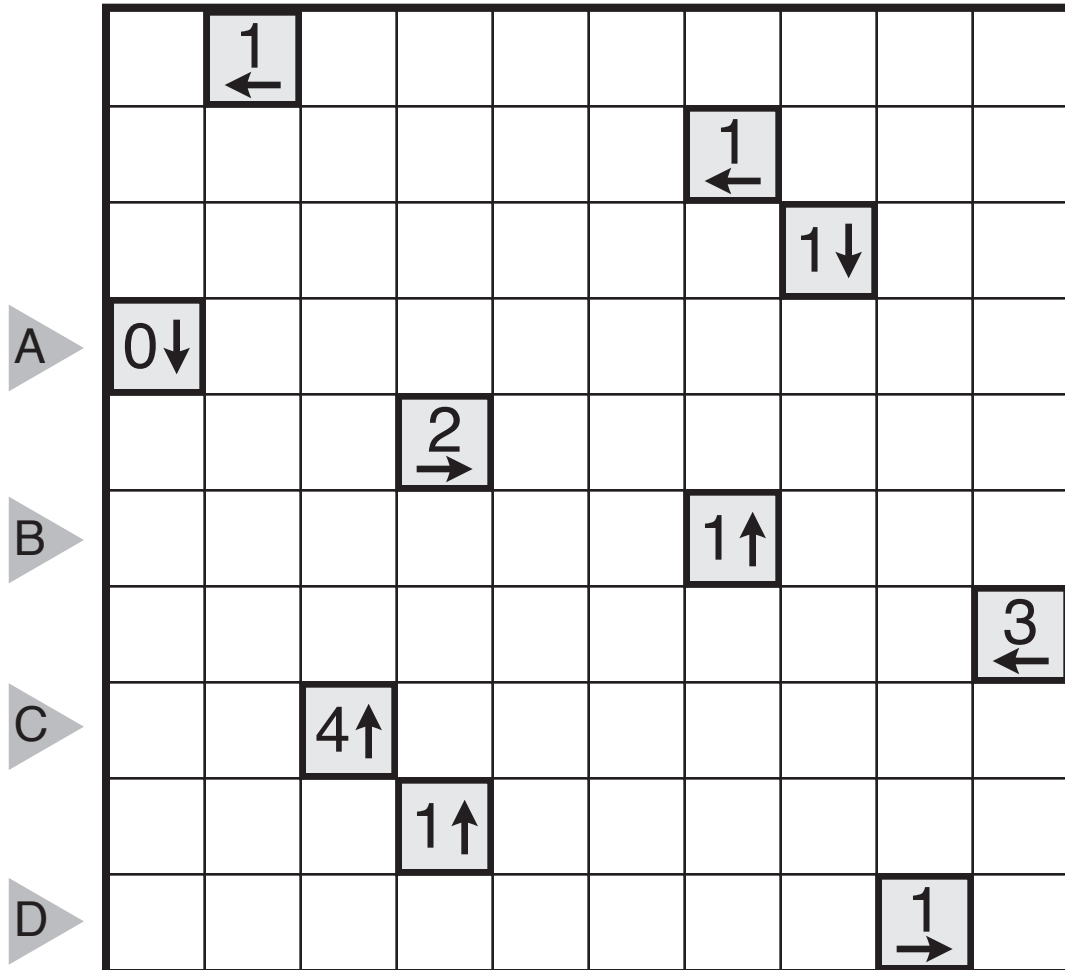


13/10/28:

Yajilin by Grant Fikes

Theme: Clue Symmetry (also one clue per row)





13/10/30:

Even/Odd Sudoku by Thomas Snyder

Theme: Clue Symmetry

(This puzzle was part of the Sudoku Grand Prix Final)

Rules: Standard Sudoku Rules. Also, digits in circles must be odd and digits in squares must be even.

B

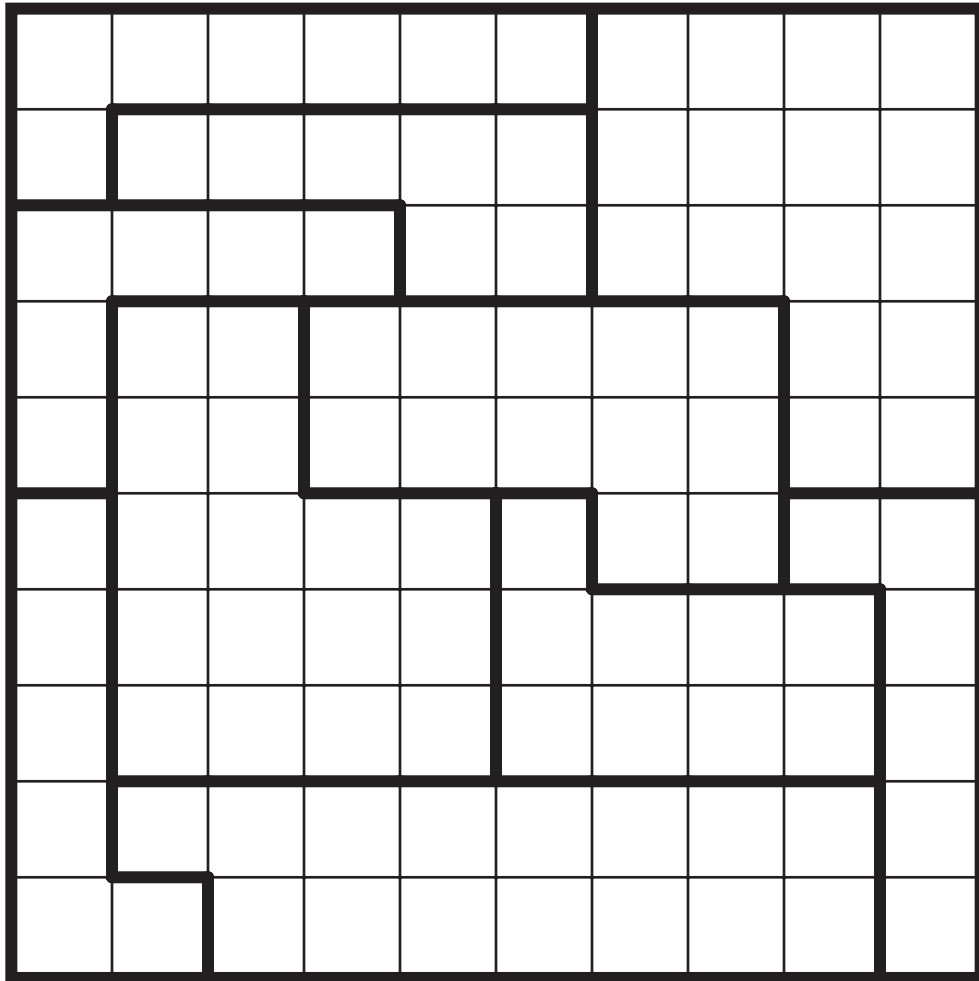
	9	3	■					
	2	5	3	7			■	●
			4	5			●	●
						●	●	4
A		■	■			●	●	
	3	■	■					
●	●			1	8			
●	●			6	3	2	1	
					●	6	7	

■ = 2, 4, 6, 8

● = 1, 3, 5, 7, 9

13/10/31:  
Star Battle by Thomas Snyder  
Theme: Clipped Rectangles

2★





13/11/02:

# Smashed Sums (False) by Palmer Mebane

Theme: 22nd WPC in 2013

(Note: ignore shading of clues when solving -- this is just to accentuate the theme)

Rules: Fill each row and column of the grid with the numbers 1-6 and two blackened cells. Numbers outside the grid are *either one lower or one higher* than the sum of the digits between the two blackened cells in that row/column.

A sum of zero is possible. Blackened cells are allowed to touch.


14 11 22 20 13 6 11

A 3

8

8

8

9

15

B 1

4