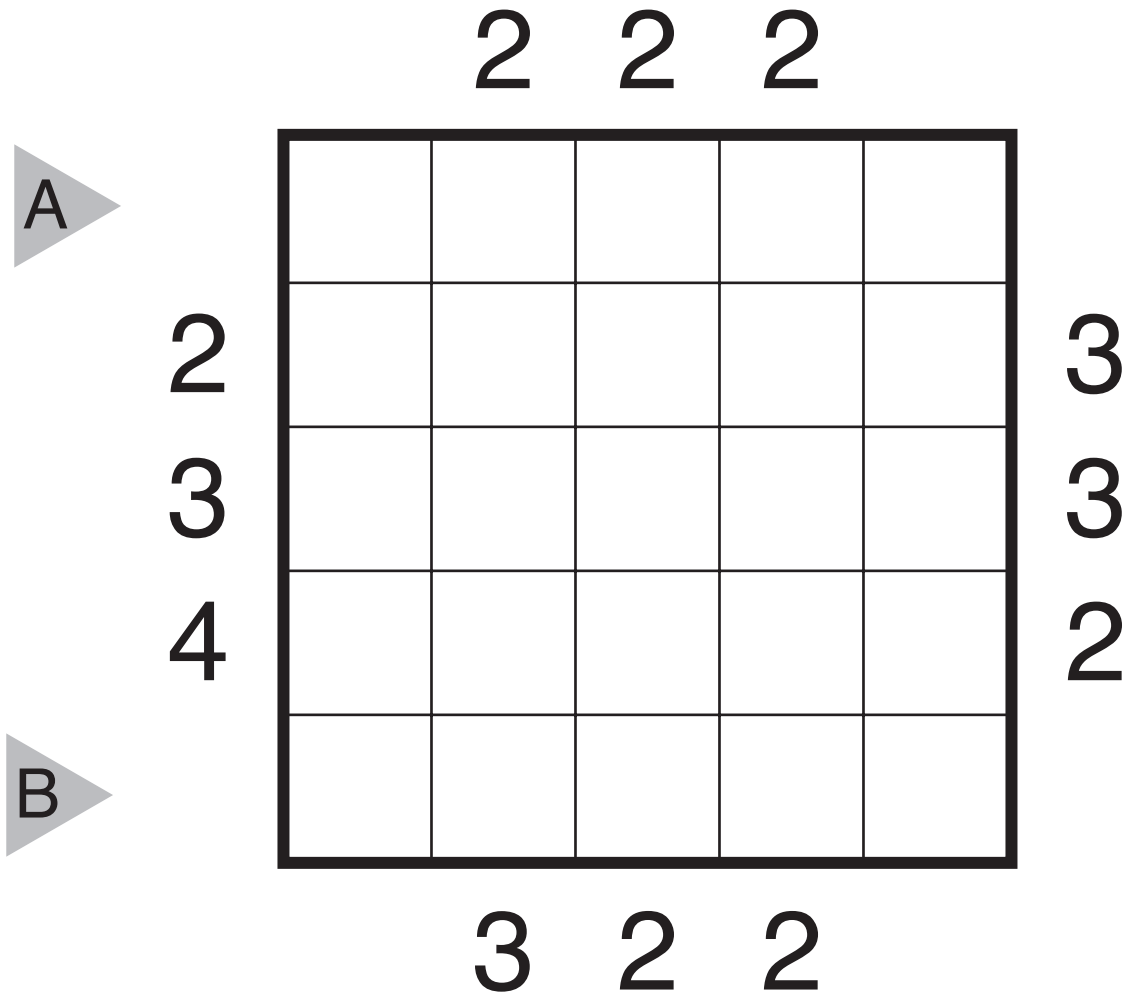


13/05/06:
Skyscrapers by Thomas Snyder
Theme: Middles

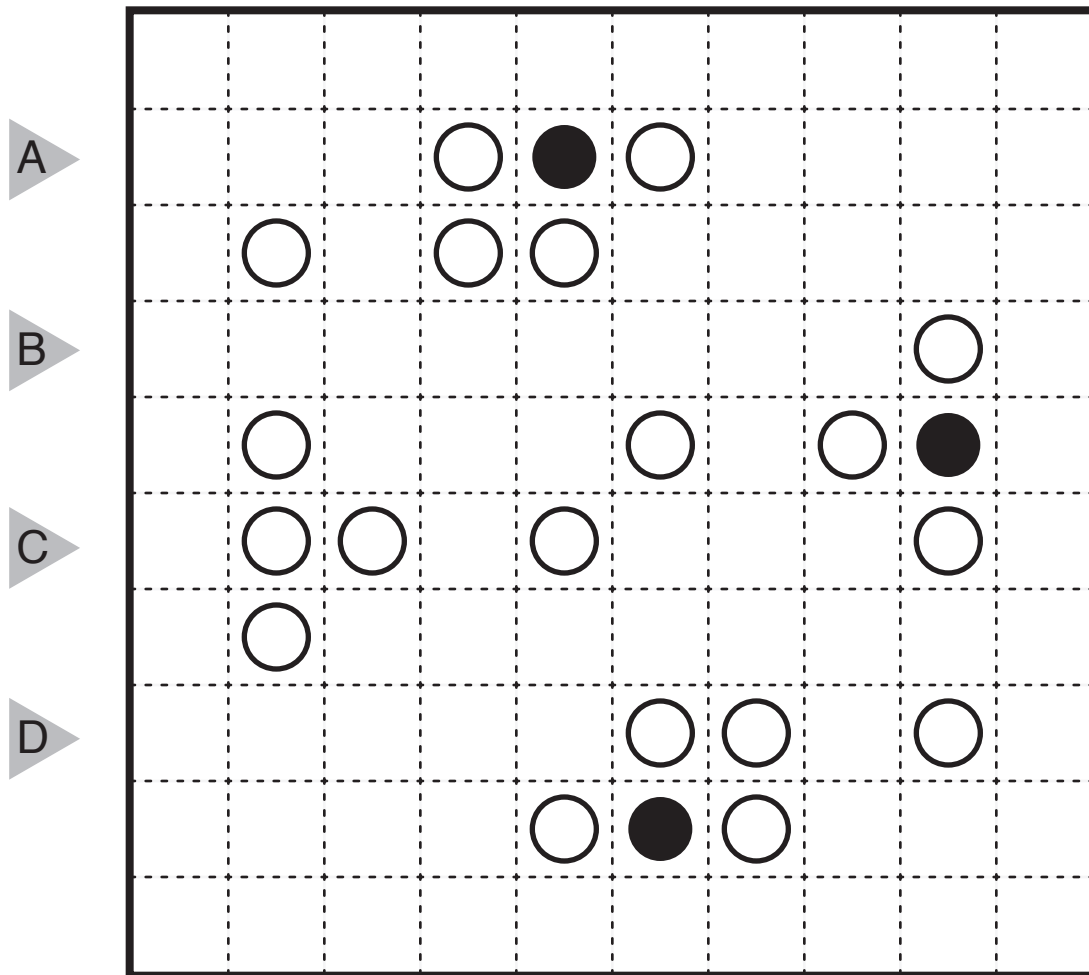


13/05/07:

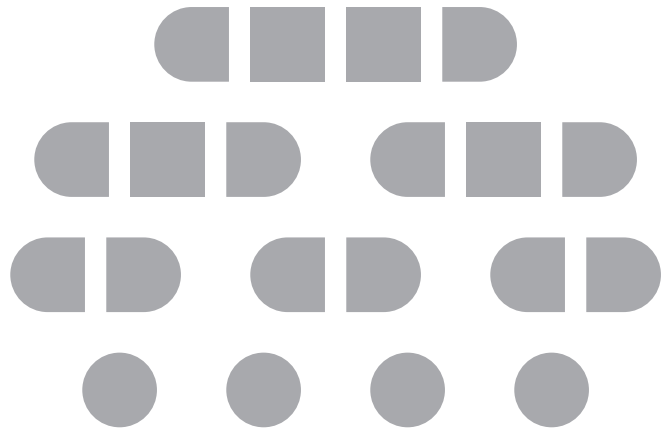
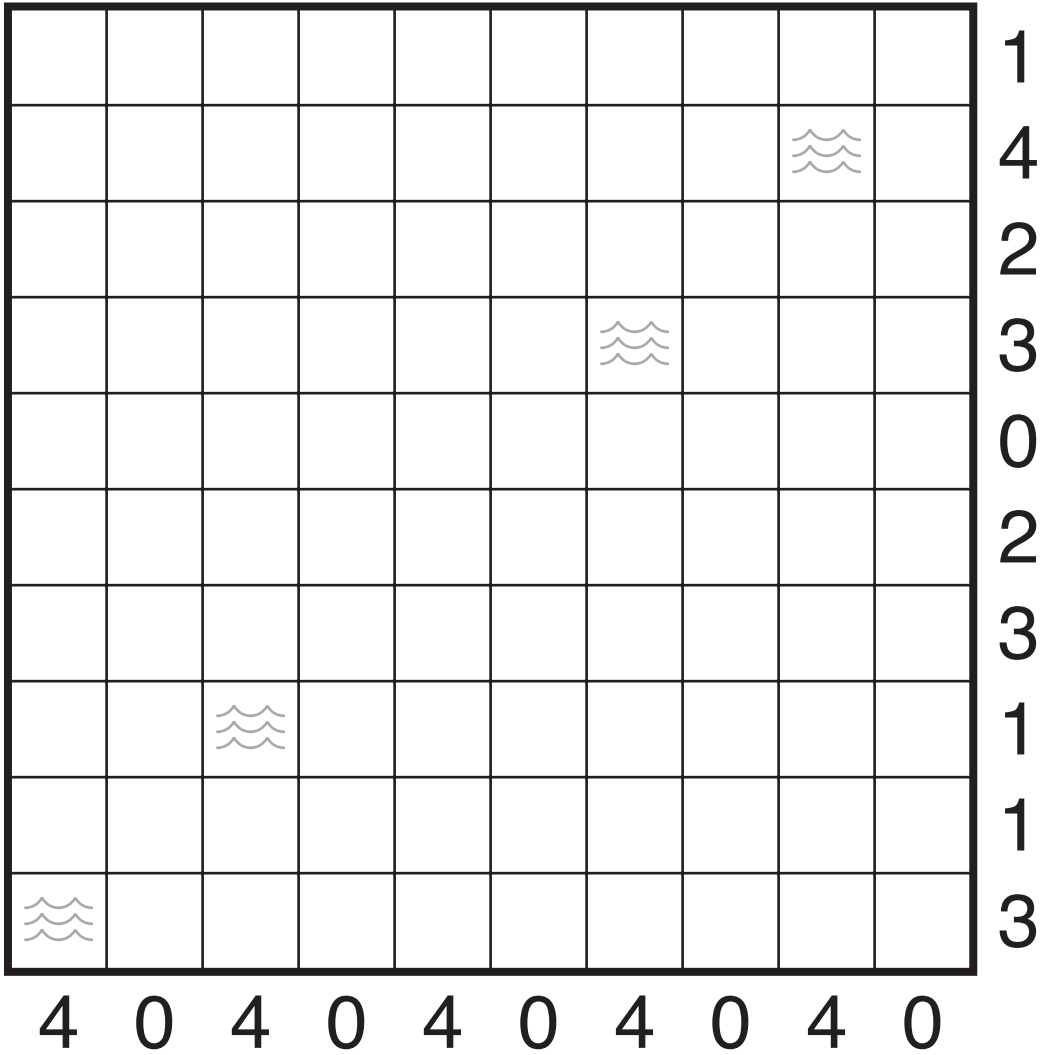
Masyu (Total) by Thomas Snyder

Theme: Totally Symmetric?

Rules: Standard Masyu rules. Also, all possible white and black circles have been given. (In other words, the loop cannot turn in any unlabeled spot and then continue straight in the next two cells as that should be a black circle; the loop also cannot go straight in any unlabeled spot and then turn in one of the adjoining cells as that should be a white circle.)



13/05/08:
 Battleships by Thomas Snyder
 Theme: Shipping Lanes



13/05/09:
Cave by Thomas Snyder
Theme: Our 95th Prescription, for 5/9

		5						9
	9				5			9
A	5		9		9			5
			9					5
		9		9				
B		5				9		
						9		
		9					9	
C			9					9
D	5	5						

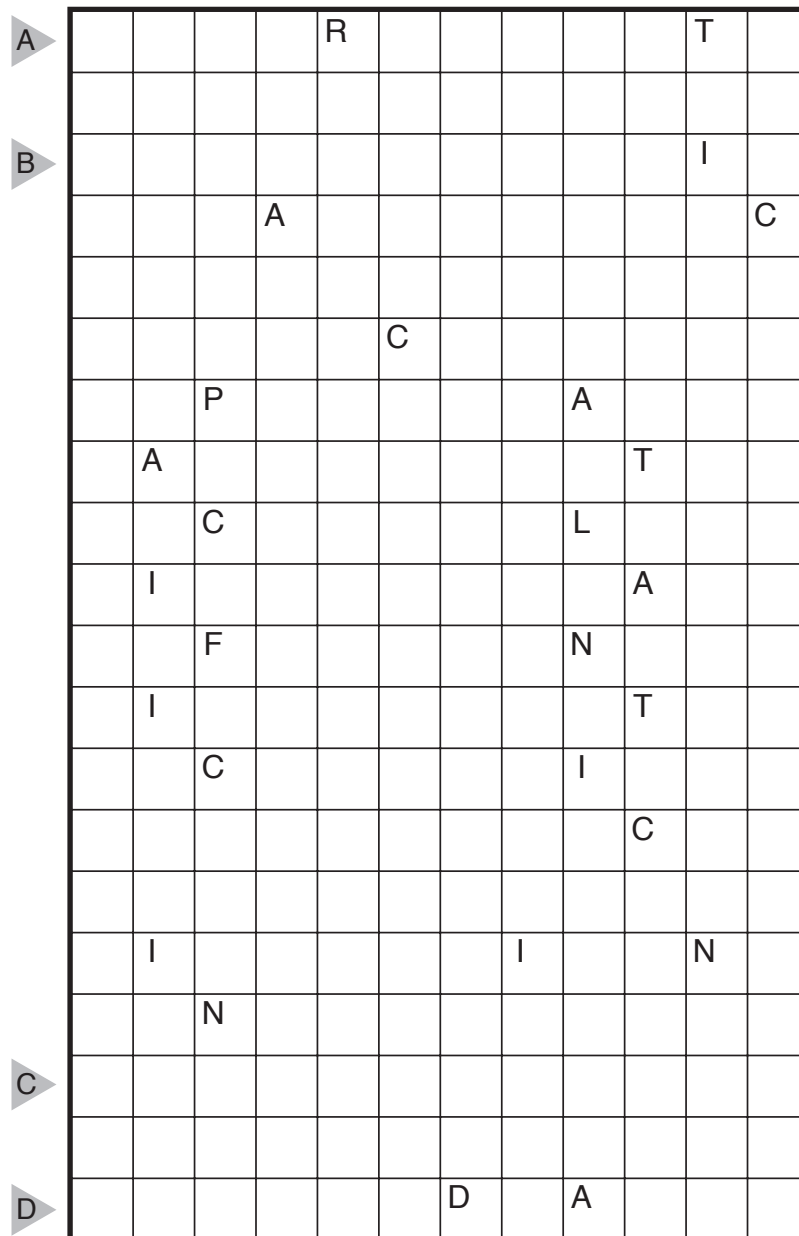
13/05/10:

Nurikabe (Cipher) by Thomas Snyder

Theme: Crypt-oceanography

Rules: Standard Nurikabe rules, except the size of each island has been encrypted.

Each letter in this puzzle stands for a different positive integer, which must be determined while solving the puzzle.



13/05/11:

Nonconsecutive Sudoku by Thomas Snyder
Theme: Clue Symmetry and Logic

	3		1		6		2	
	1				2		3	
	4		3				6	
	9		5		4		7	

13/05/12 (Sunday Surprise):
 Spy Futoshiki by Tyler Hinman
 Theme: Spies Among Us

Rules: Insert a number from 1-5 into each square so that each number appears once in every row and column. Inequality signs between the boxes indicate the larger/smaller numbers, with the single exception that the number 1, the “Spy”, is considered larger than the number 5 if in adjacent cells.

A				B
□	□	□	<	□
v	v	v	v	v
□	□	□	□	□
^	^	□	□	□
□	□	□	□	□
□	□	□	<	□
□	□	3	^	□
□	□	1	□	□