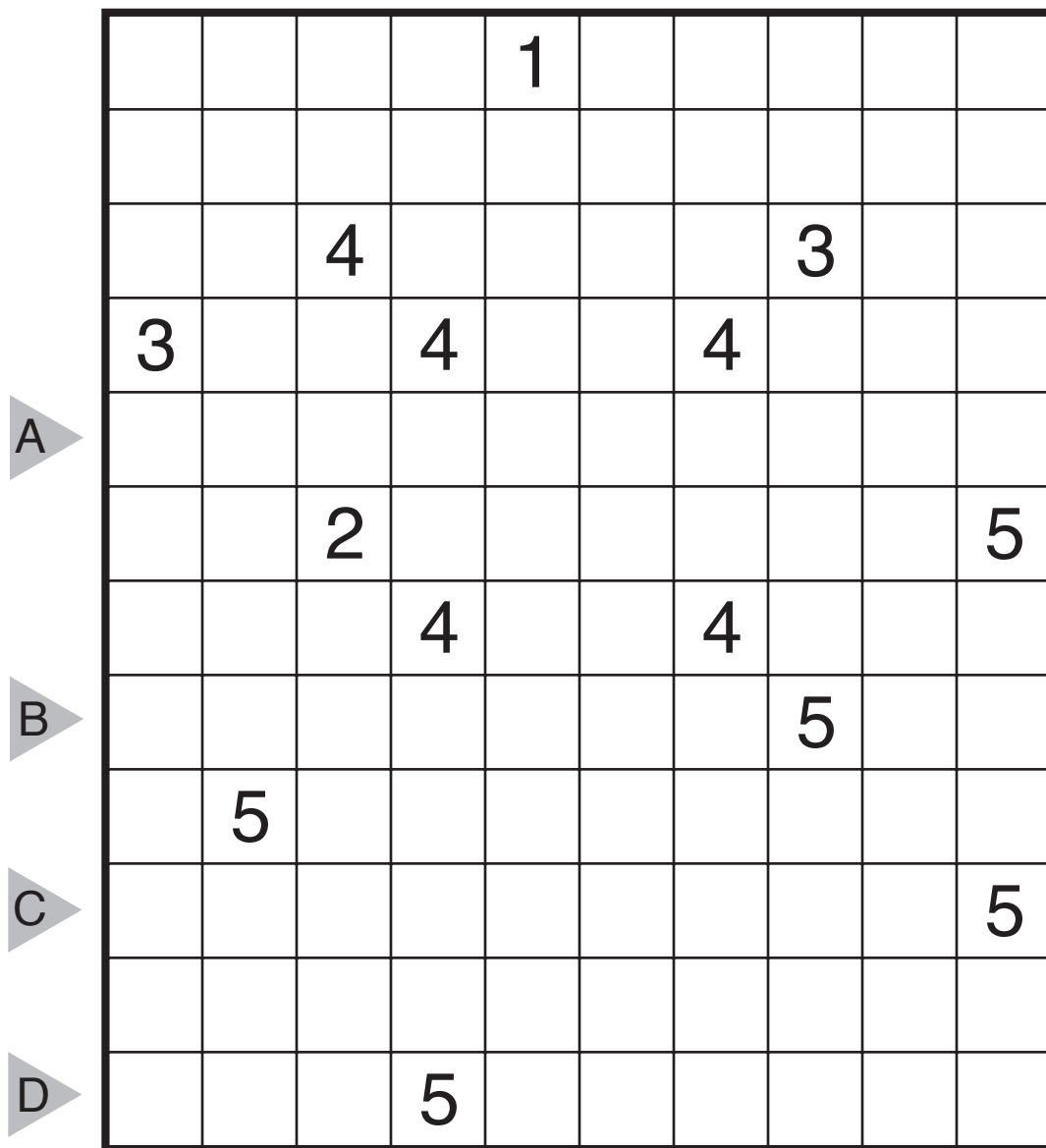


13/04/15:
Cave by Thomas Snyder
Theme: Even Frame

		2		2		2		2	
A	4								8
	4			11					8
B					8				
C	4					9			8
D	4								8
		6		6		6		6	

13/04/16:
 Nurikabe (Unique Islands)
 by Thomas Snyder

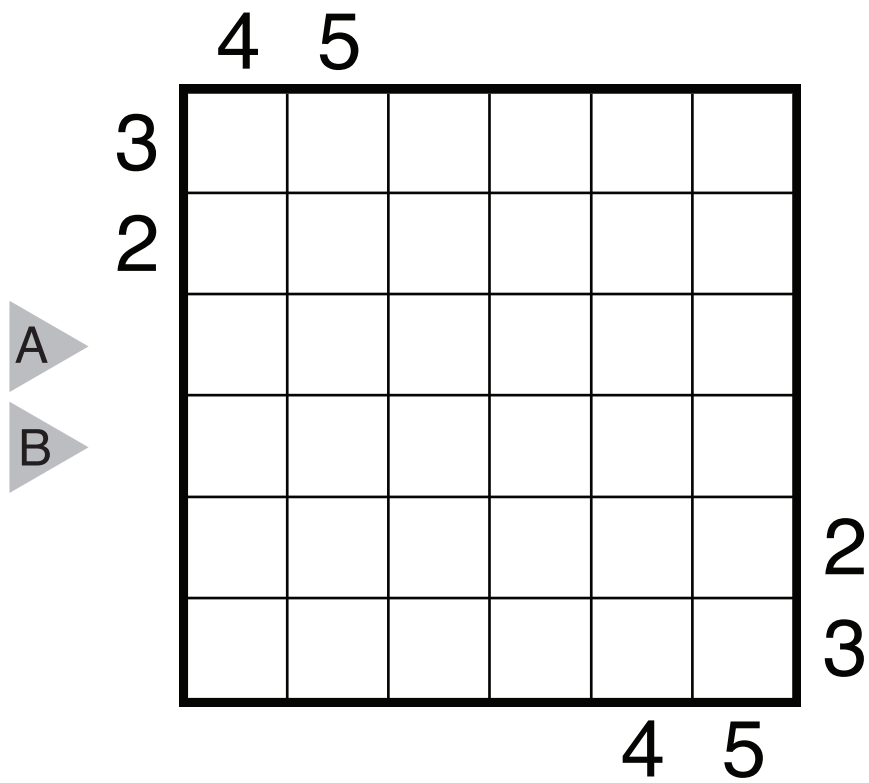
Rules: Standard Nurikabe Rules. Also, each island shape must be unique.
 This means no two islands, including rotation and/or reflection of the shapes,
 can be superimposed.



13/04/17:
Sudoku by Thomas Snyder
Theme: Big and Small

			1	2			5	4
				3	4			2
A					5	1		
	5					2	3	
	6	7					4	5
		8	9					1
B			6	5				
	9			6	7			
	7	5			8	9		

13/04/18:
Skyscrapers by Thomas Snyder
Theme: 2 to 5, Twice

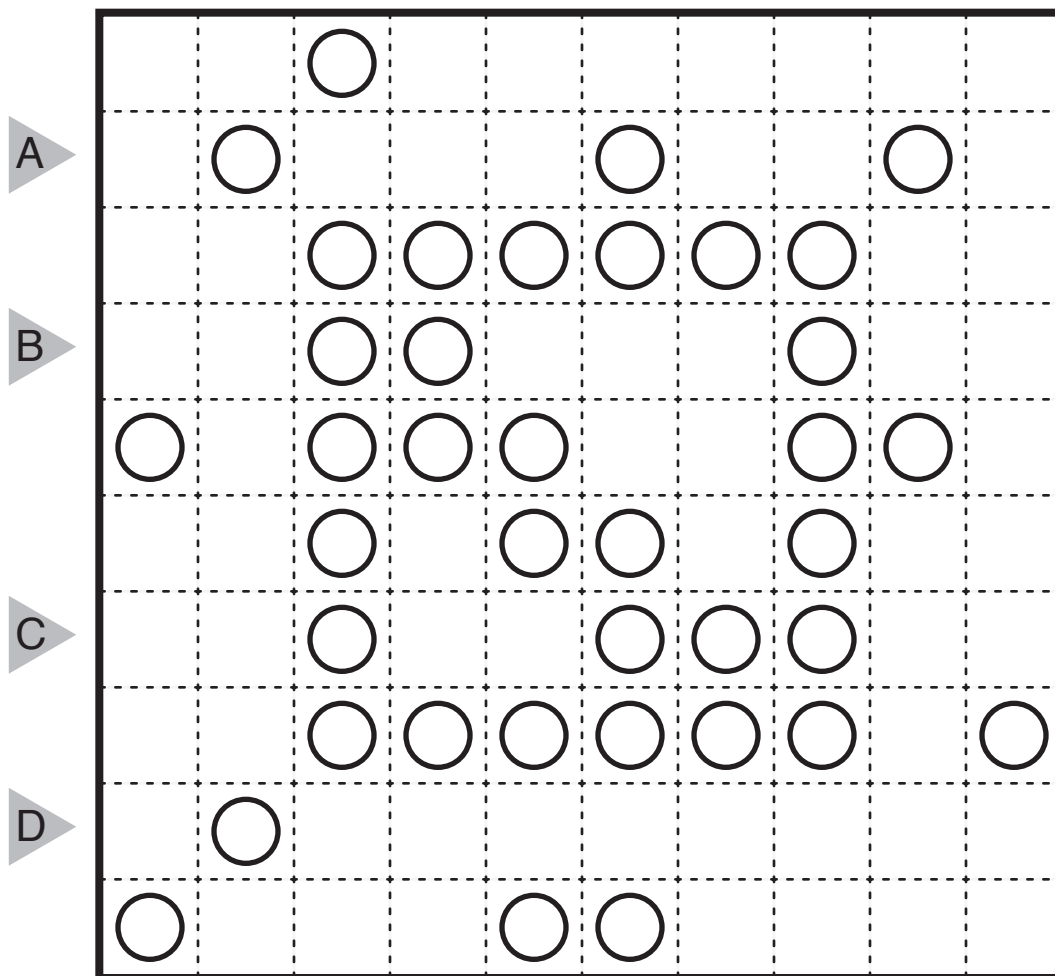


13/04/19:

Masyu (Deformable) by Thomas Snyder

Theme: This is not all white!

Rules: Standard Masyu rules. Also, some white circles must be shaded in to become black circles to allow solution of the puzzle.



13/04/20:
 Battleships by Thomas Snyder
 Theme: X Marks the Spot

