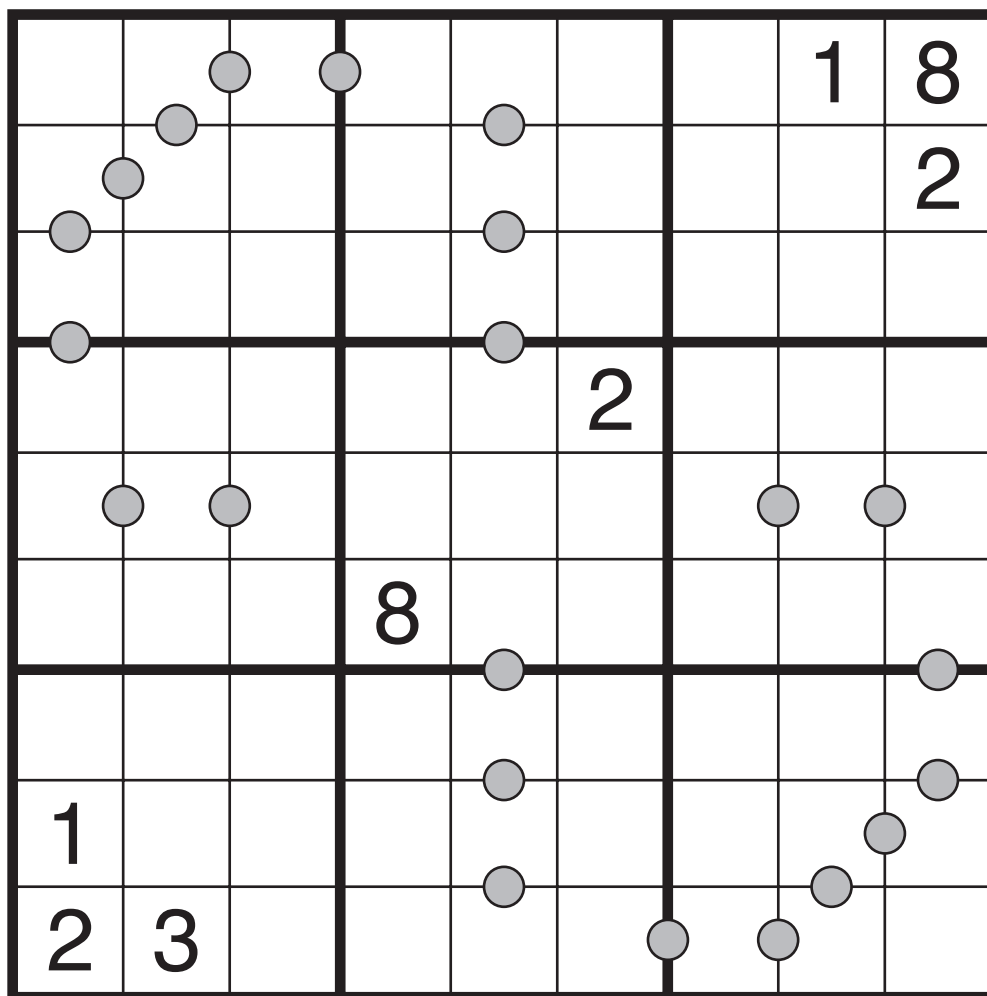


# Consecutive Pairs Sudoku by Akash Doulani

Rules: Standard Sudoku rules. Additionally, if a gray circle is given between two adjacent cells, then the two numbers in those cells must be consecutive. (Note: not all gray circles are given; adjacent cells without a circle may contain either consecutive numbers or nonconsecutive numbers.)



*Sand Timer*